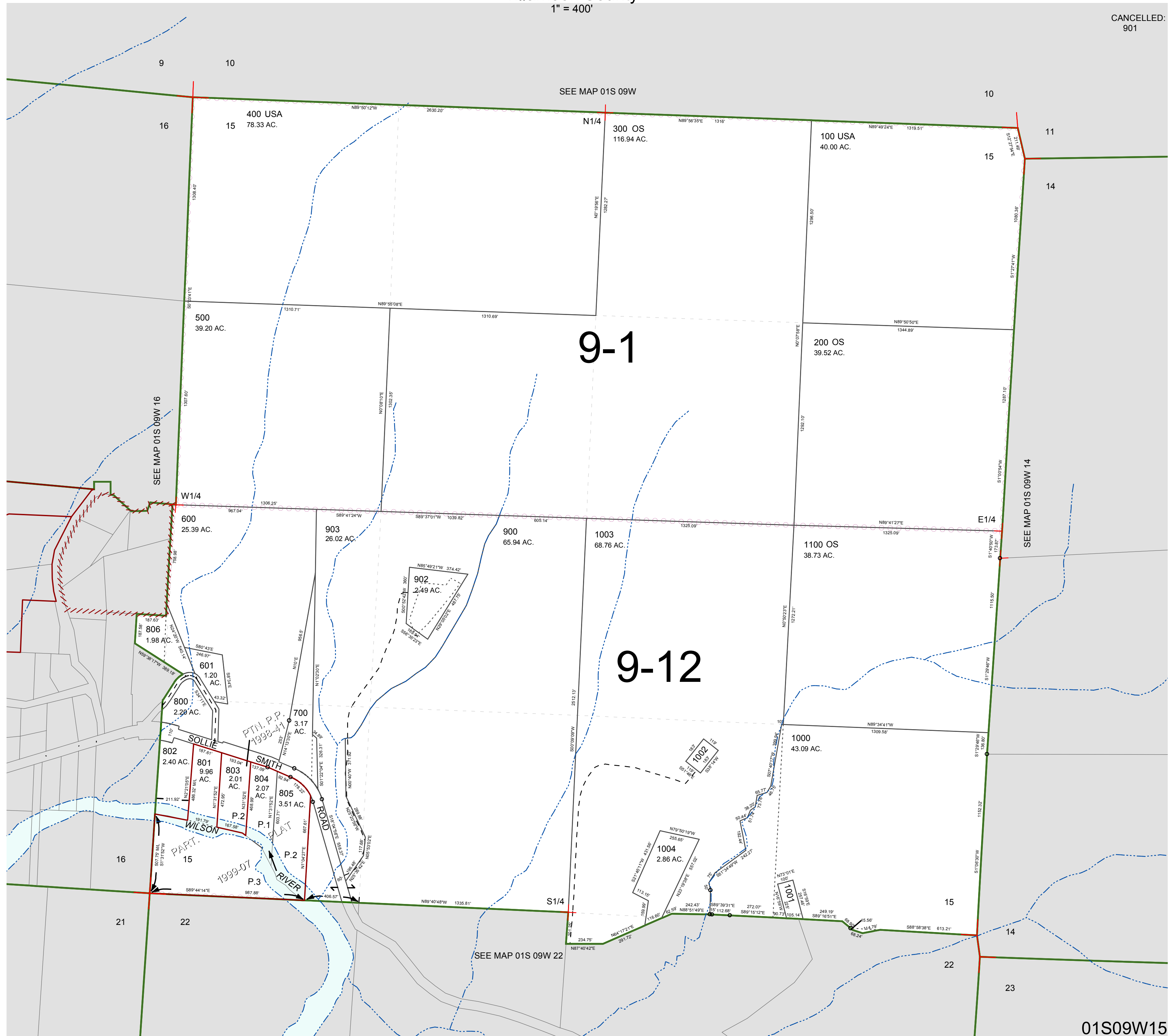


FOR ASSESSMENT AND TAXATION ONLY, NOT SUITABLE FOR  
LEGAL, ENGINEERING, OR SURVEY PURPOSES

SECTION 15 T.1S. R.9W. W.M.  
Tillamook County  
1" = 400'

01S09W15

CANCELLED:  
901



01S09W15  
REVISED 2/18/16, WS