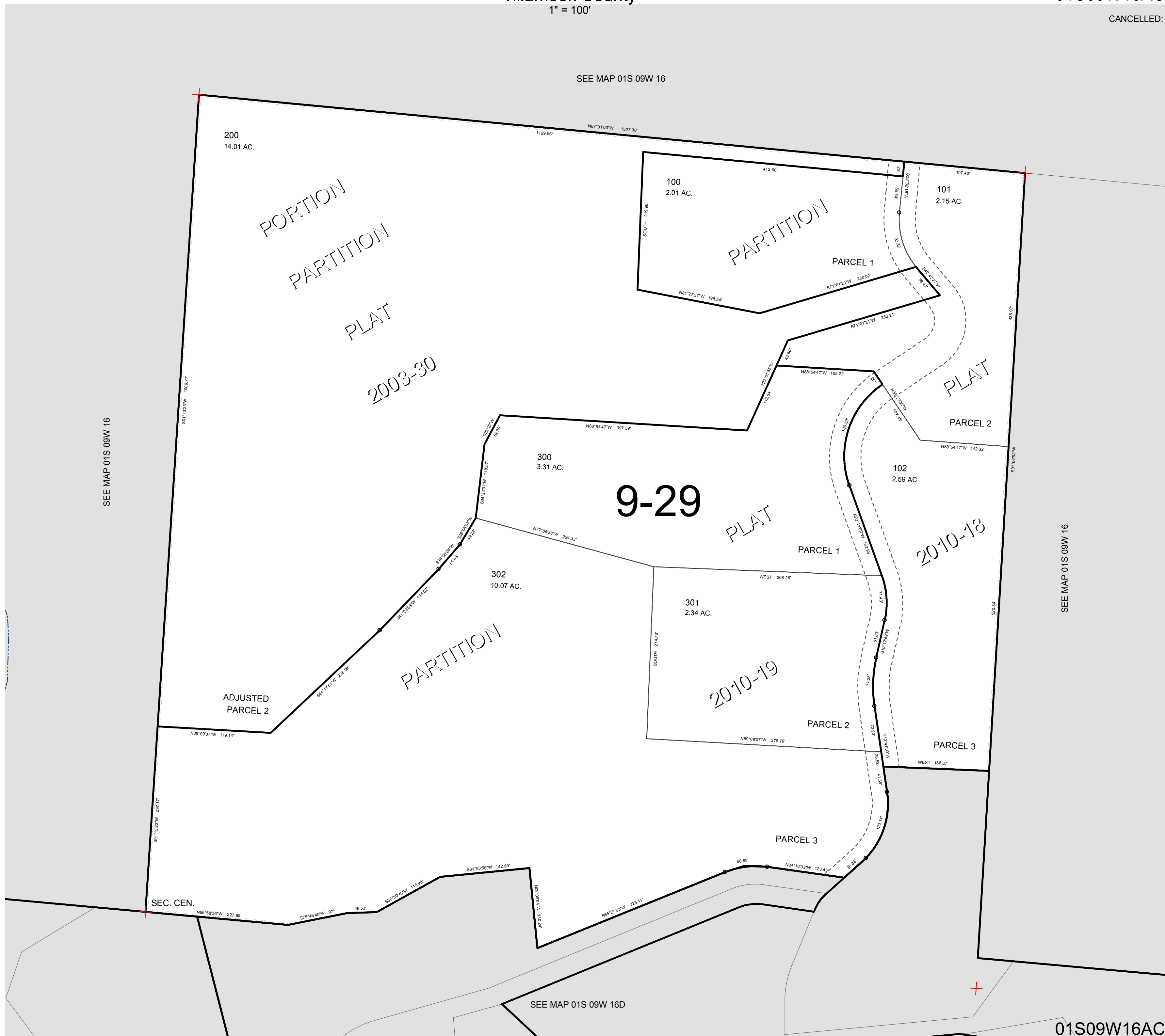


FOR ASSESSMENT AND TAXATION ONLY, NOT SUITABLE FOR LEGAL, ENGINEERING, OR SURVEY PURPOSES

S.W.1/4 N.E.1/4 SEC.16 T.1S. R.9W. W.M.
Tillamook County
1" = 100'

01S09W16AC

CANCELLED:



01S09W16AC
REVISED 3/31/11, WS