

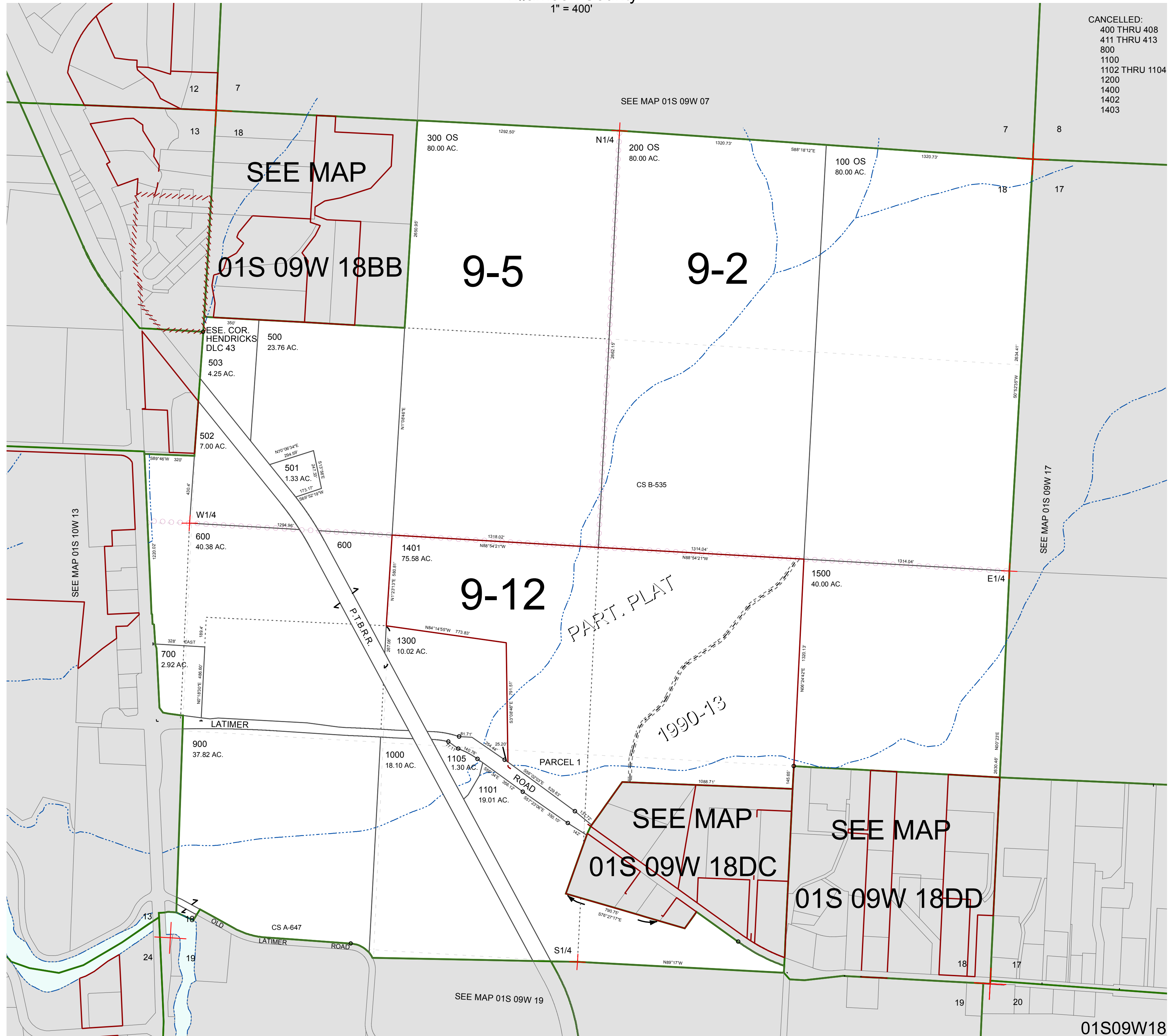
FOR ASSESSMENT AND TAXATION ONLY, NOT SUITABLE FOR LEGAL, ENGINEERING, OR SURVEY PURPOSES

SECTION 18 T.1S. R.9W. W.M.  
Tillamook County

1" = 400'

01S09W18

CANCELLED:  
400 THRU 408  
411 THRU 413  
800  
1100  
1102 THRU 1104  
1200  
1400  
1402  
1403



01S09W18  
REVISED 2/18/16, WS