

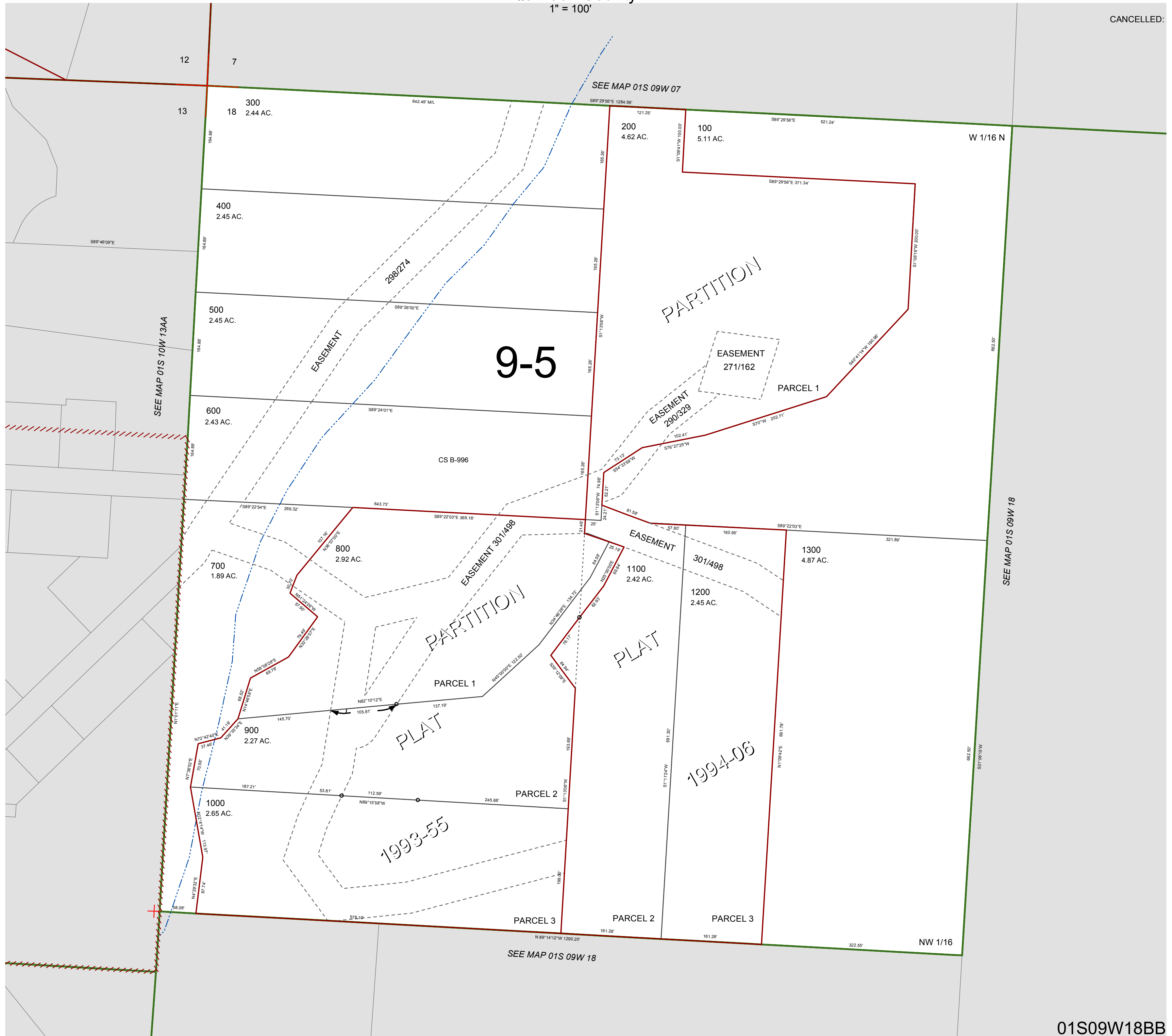
FOR ASSESSMENT AND TAXATION ONLY, NOT SUITABLE FOR LEGAL, ENGINEERING, OR SURVEY PURPOSES

N.W.1/4 N.W.1/4 SEC.18 T.1S. R.9W. W.M.  
Tillamook County

1" = 100'

01S09W18BB

CANCELLED:



01S09W18BB

REVISED 2/18/16, WS