

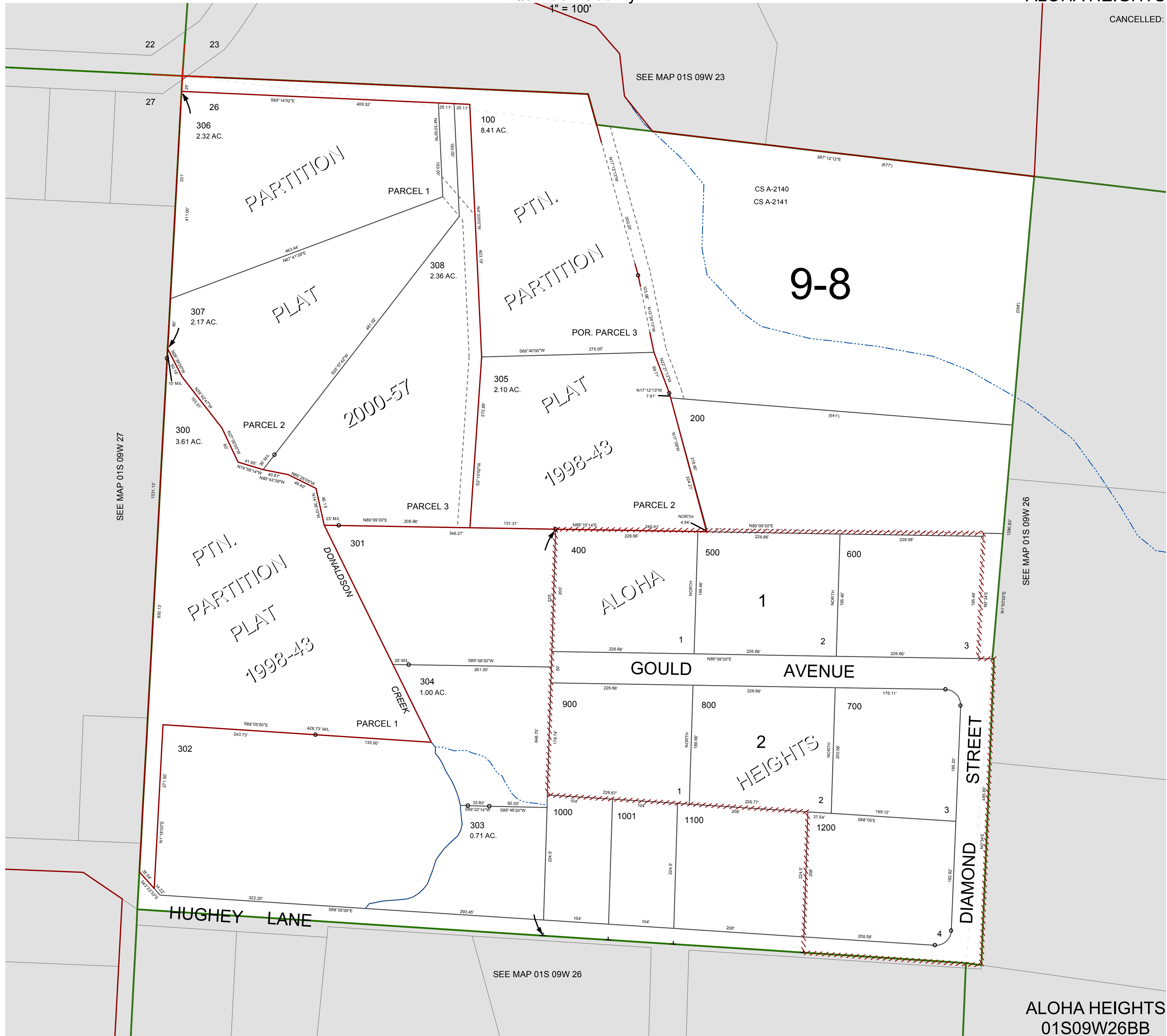
FOR ASSESSMENT AND TAXATION ONLY, NOT SUITABLE FOR LEGAL, ENGINEERING, OR SURVEY PURPOSES

N.W. 1/4 N.W. 1/4 SEC. 26 T. 1S. R. 9W. W.M.
Tillamook County

01S09W26BB
ALOHA HEIGHTS

1" = 100'

CANCELLED:



SEE MAP 01S 09W 27

SEE MAP 01S 09W 23

SEE MAP 01S 09W 26

SEE MAP 01S 09W 26

ALOHA HEIGHTS
01S09W26BB

REVISED 2/18/16, WS