

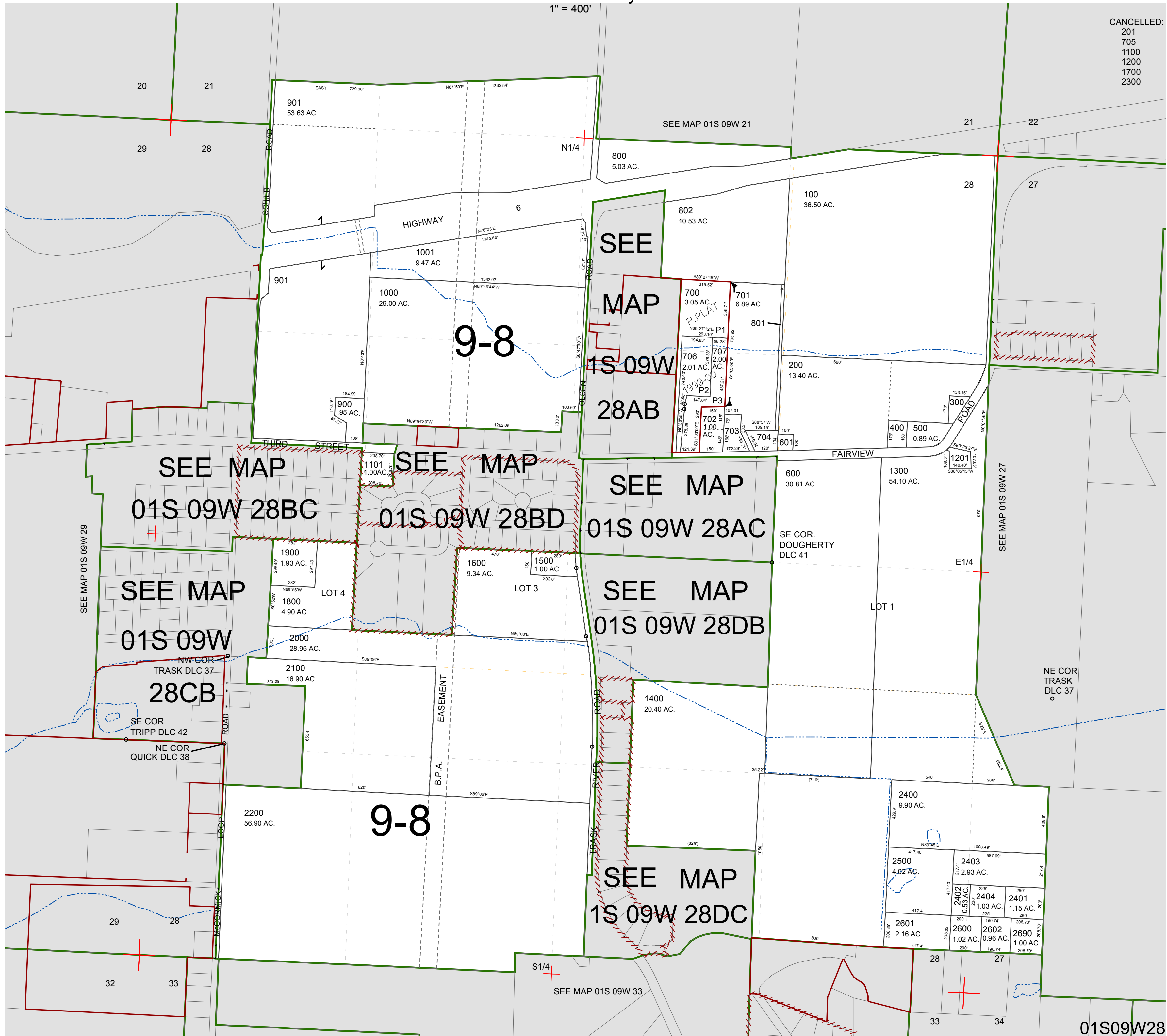
FOR ASSESSMENT AND TAXATION ONLY, NOT SUITABLE FOR LEGAL, ENGINEERING, OR SURVEY PURPOSES

SECTION 28 T.1S. R.9W. W.M.
Tillamook County

1" = 400'

01S09W28

CANCELLED:
201
705
1100
1200
1700
2300



01S09W28
REVISED 2/18/16, WS