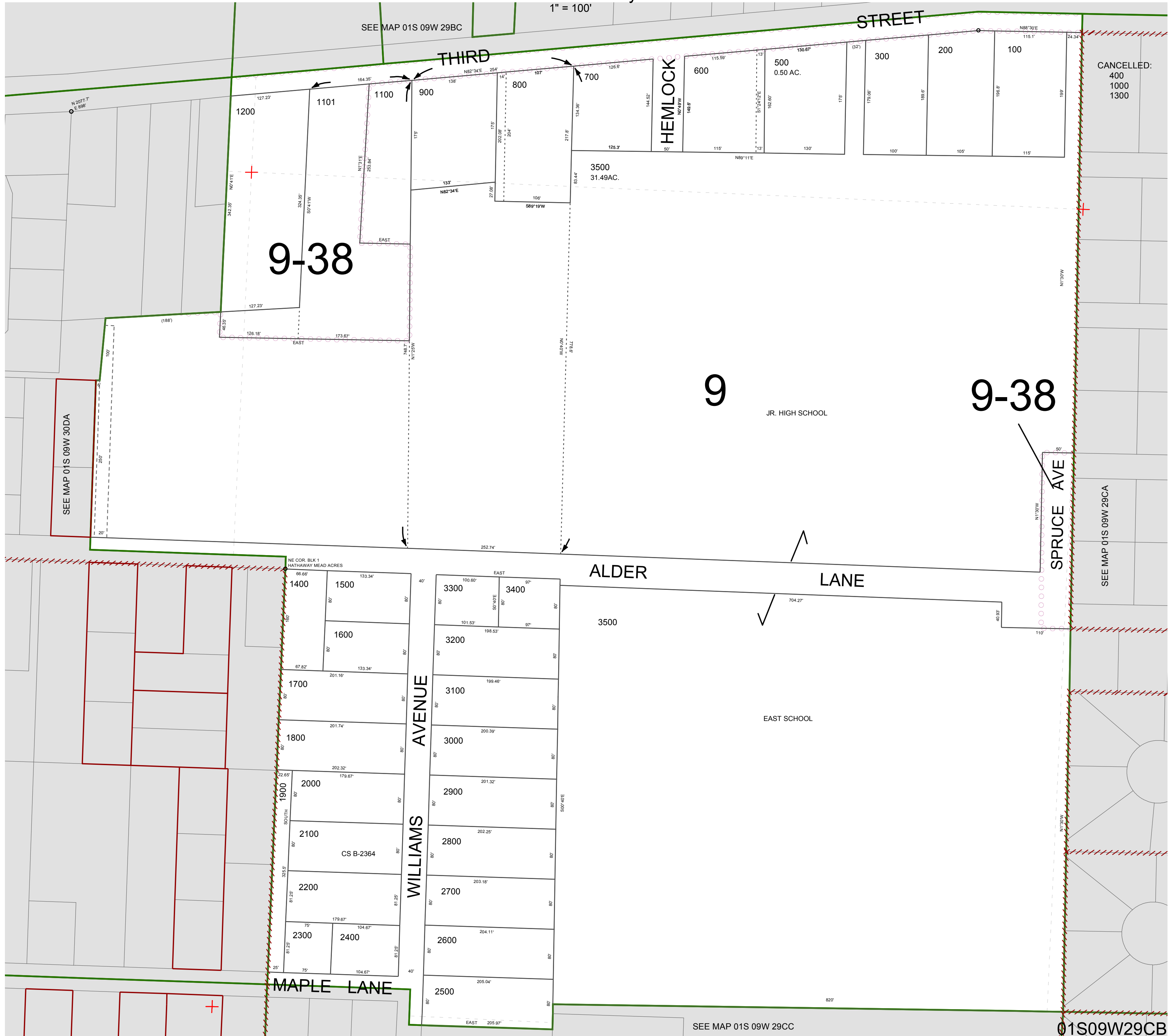


FOR ASSESSMENT AND TAXATION ONLY. NOT SUITABLE FOR LEGAL, ENGINEERING, OR SURVEY PURPOSES

N.W. 1/4 S.W. 1/4 SEC. 29 T. 1S. R. 9W. W.M.  
Tillamook County

01S09W29CB

1" = 100'



SEE MAP 01S 09W 29CC

01S09W29CB

REVISED 7/24/14, WS