

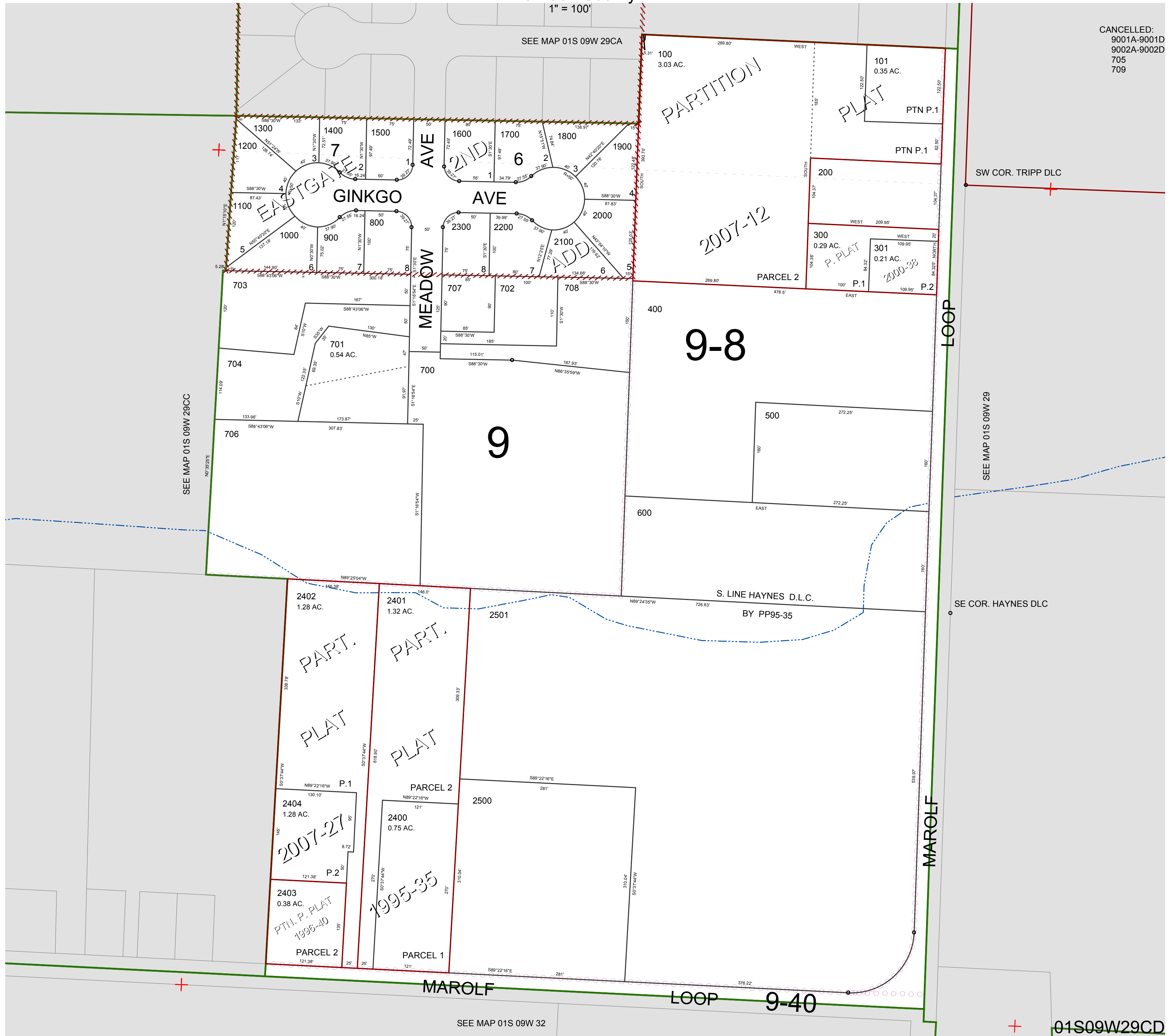
FOR ASSESSMENT AND TAXATION ONLY. NOT SUITABLE FOR LEGAL, ENGINEERING, OR SURVEY PURPOSES

S.E.1/4 S.W.1/4 SEC.29 T.1S. R.9W. W.M.  
Tillamook County

01S09W29CD

1" = 100'

CANCELLED:  
9001A-9001D  
9002A-9002D  
705  
709



SEE MAP 01S 09W 29CC

SEE MAP 01S 09W 29CA

SEE MAP 01S 09W 29

SEE MAP 01S 09W 32

01S09W29CD

REVISED 03/02/18, WS