

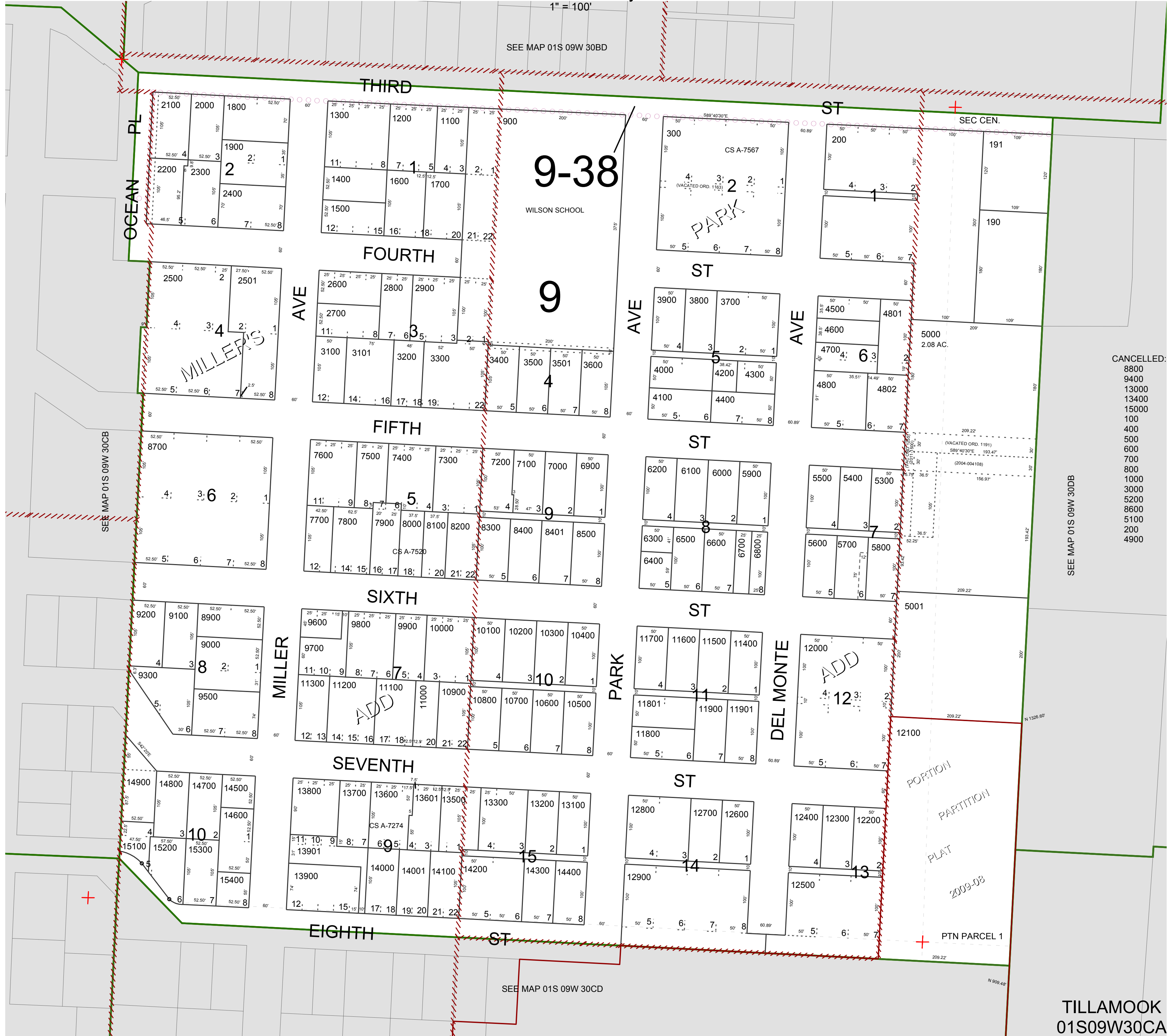
FOR ASSESSMENT AND TAXATION ONLY, NOT SUITABLE FOR LEGAL, ENGINEERING, OR SURVEY PURPOSES

N.E.1/4 S.W.1/4 SEC.30 T.1S. R.9W. W.M.
Tillamook County

01S09W30CA
TILLAMOOK

1" = 100'

SEE MAP 01S 09W 30BD



- CANCELLED:
- 8800
 - 9400
 - 13000
 - 13400
 - 15000
 - 100
 - 400
 - 500
 - 600
 - 700
 - 800
 - 1000
 - 3000
 - 5200
 - 8600
 - 5100
 - 200
 - 4900

SEE MAP 01S 09W 30DB

SEE MAP 01S 09W 30CD