

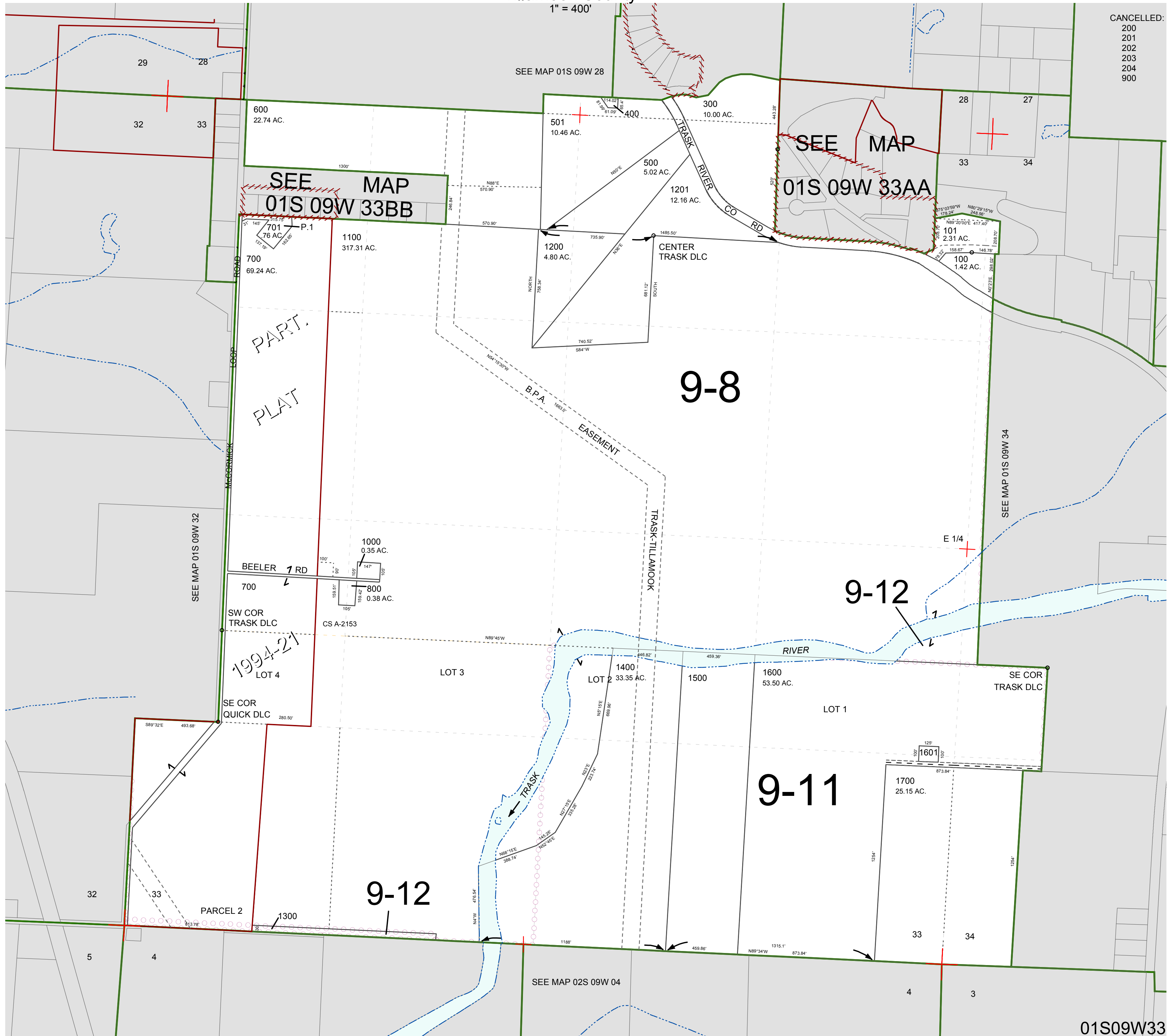
FOR ASSESSMENT AND TAXATION ONLY, NOT SUITABLE FOR LEGAL, ENGINEERING, OR SURVEY PURPOSES

SECTION 33 T.1S. R.9W. W.M.  
Tillamook County

01S09W33

1" = 400'

CANCELLED:  
200  
201  
202  
203  
204  
900



01S09W33  
REVISED 2/18/16, WS