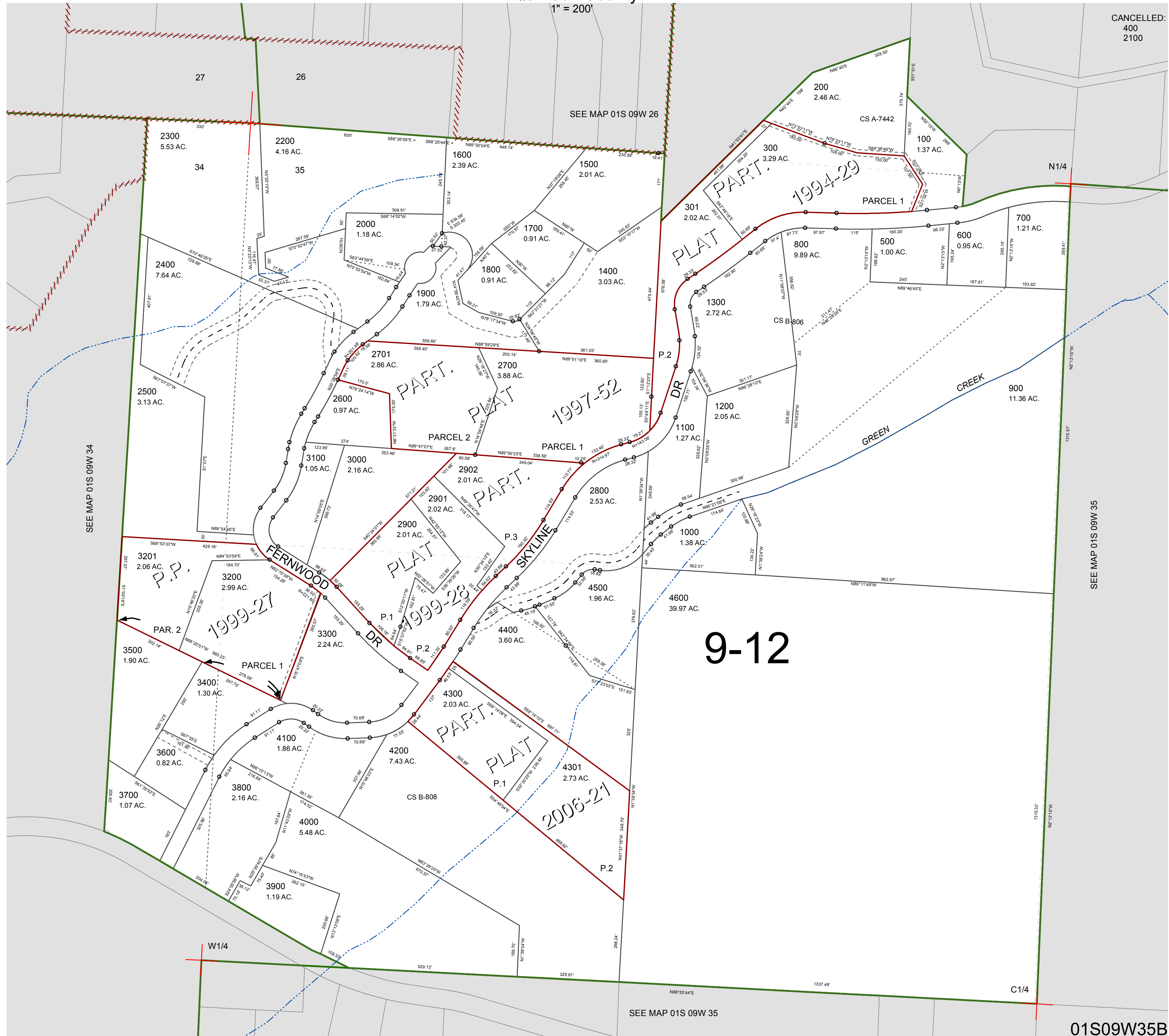


FOR ASSESSMENT AND TAXATION ONLY, NOT SUITABLE FOR LEGAL, ENGINEERING, OR SURVEY PURPOSES

N.W. 1/4 SEC. 35 T. 1S. R. 9W. W.M.
Tillamook County

01S09W35B

CANCELLED:
400
2100



9-12

SEE MAP 01S 09W 35

01S09W35B
REVISED 2/18/16, WS