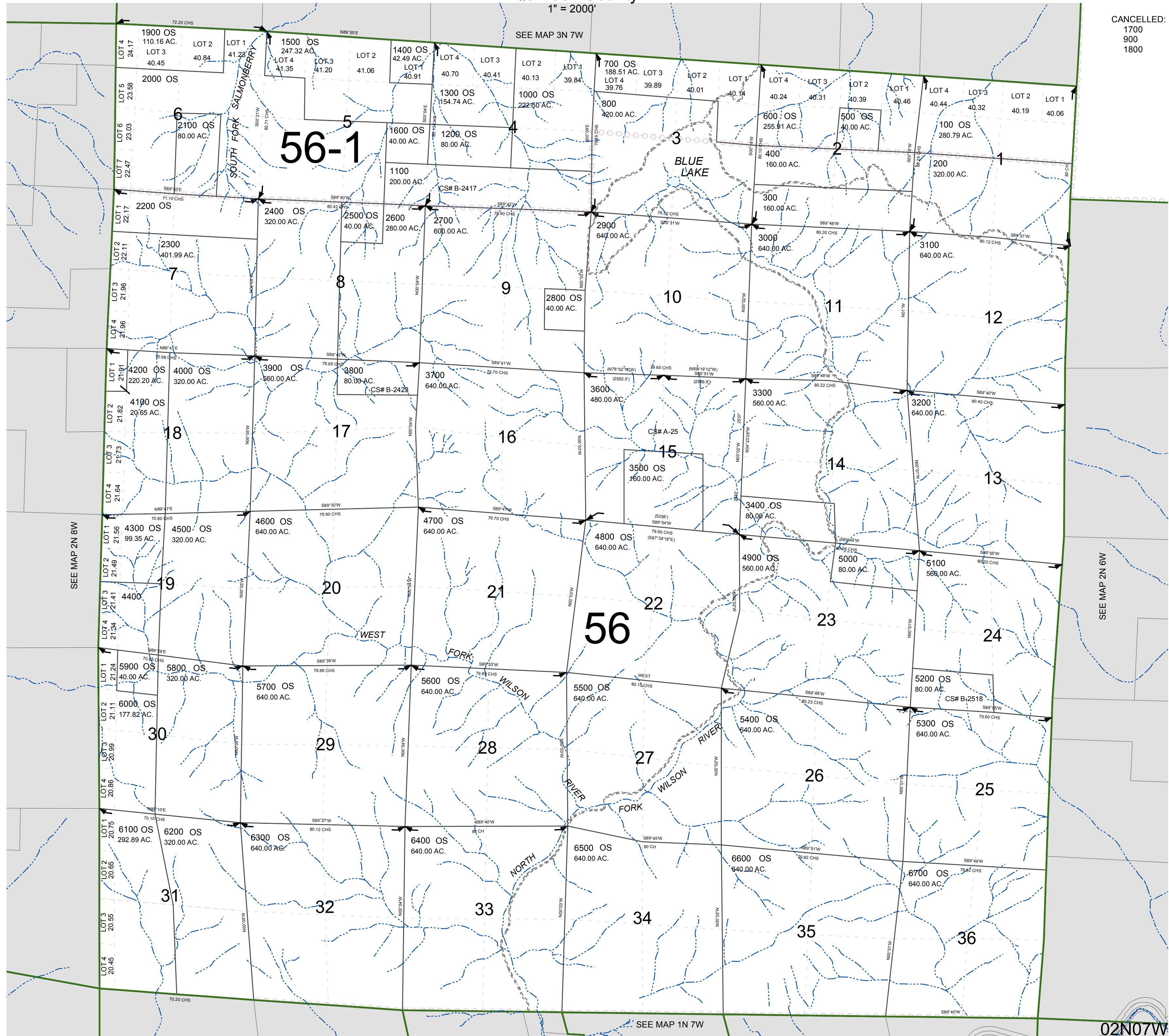


FOR ASSESSMENT AND TAXATION ONLY, NOT SUITABLE FOR LEGAL, ENGINEERING, OR SURVEY PURPOSES

T.2N. R.7W. W.M.
Tillamook County
1" = 2000'

02N07W

CANCELLED:
1700
900
1800



02N07W
REVISED 9/17/15, WS