

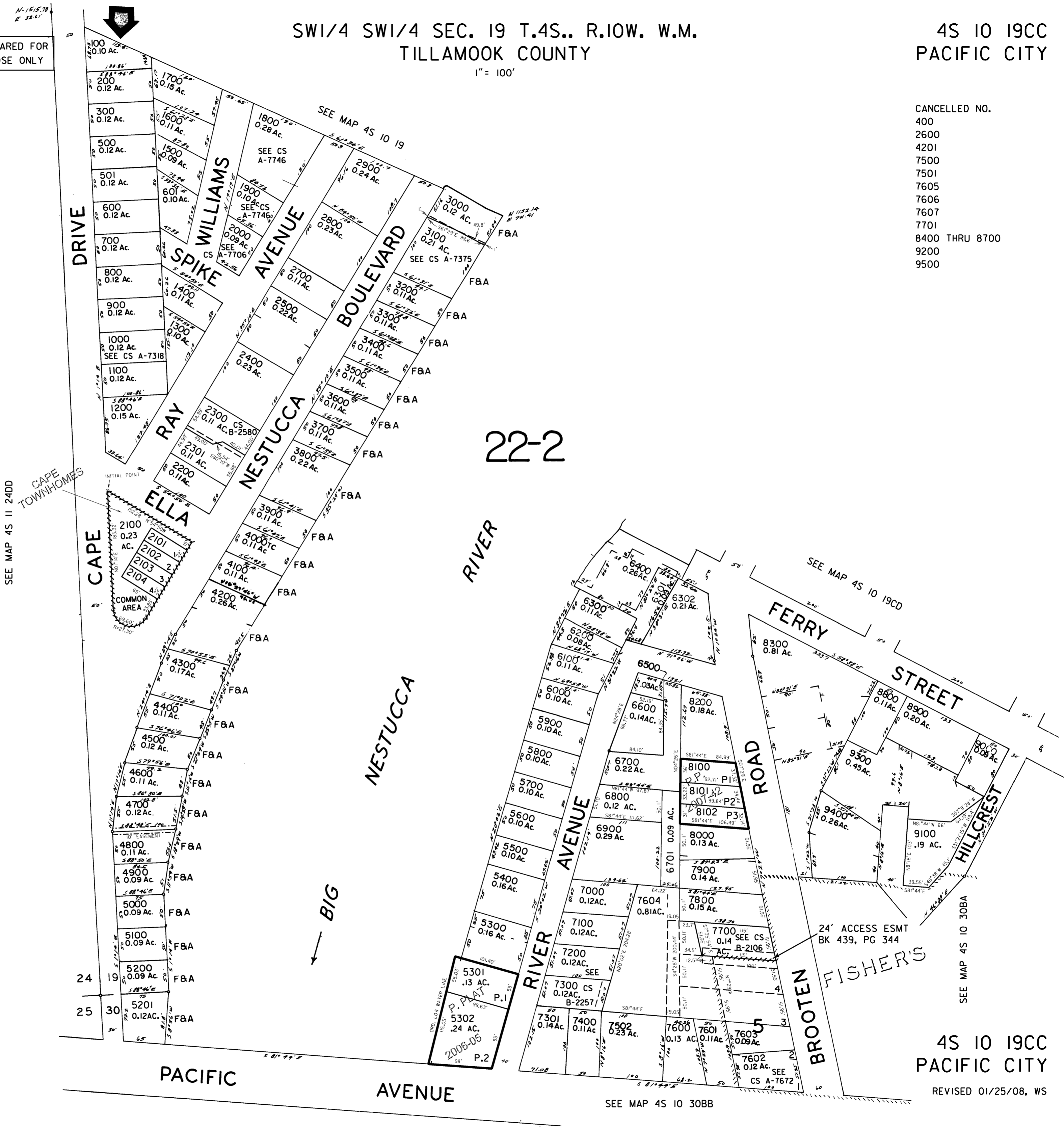
THIS MAP WAS PREPARED FOR ASSESSMENT PURPOSE ONLY

SW1/4 SW1/4 SEC. 19 T.4S.. R.10W. W.M.
TILLAMOOK COUNTY

1" = 100'

4S 10 19CC
PACIFIC CITY

- CANCELLED NO.
- 400
 - 2600
 - 4201
 - 7500
 - 7501
 - 7605
 - 7606
 - 7607
 - 7701
 - 8400 THRU 8700
 - 9200
 - 9500



SEE MAP 4S 11 24DD

CAPE TOWNHOMES

CAPE COMMON AREA

BIG

24' ACCESS ESMT BK 439, PG 344

SEE MAP 4S 10 30BA

SEE MAP 4S 10 30BB

4S 10 19CC
PACIFIC CITY

REVISED 01/25/08, WS