

N.E. 1/4 N.W. 1/4 SEC. 30 T.4S. R.10W. W.M.

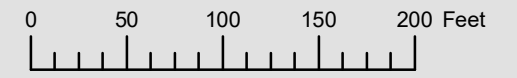
TILLAMOOK COUNTY

1" = 100'

04S10W30BA  
PACIFIC CITY

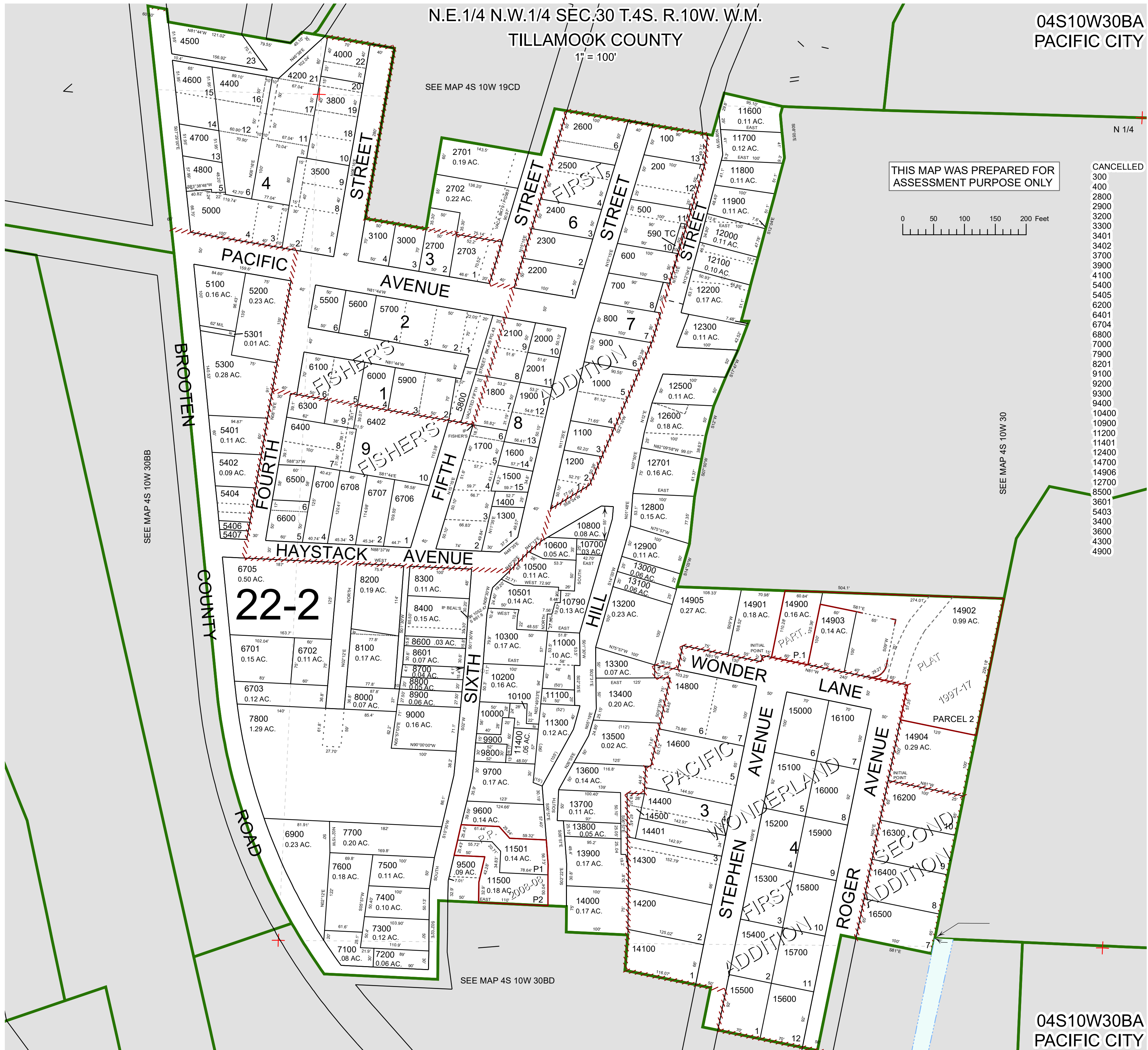
SEE MAP 4S 10W 19CD

THIS MAP WAS PREPARED FOR  
ASSESSMENT PURPOSE ONLY



CANCELLED

- 300
- 400
- 2800
- 2900
- 3200
- 3300
- 3401
- 3402
- 3700
- 3900
- 4100
- 5400
- 5405
- 6200
- 6401
- 6704
- 6800
- 7000
- 7900
- 8201
- 9100
- 9200
- 9300
- 9400
- 10400
- 10900
- 11200
- 11401
- 12400
- 14700
- 14906
- 12700
- 8500
- 3601
- 5403
- 3400
- 3600
- 4300
- 4900



SEE MAP 4S 10W 30BB

SEE MAP 4S 10W 30

SEE MAP 4S 10W 30BD

04S10W30BA  
PACIFIC CITY

Revised 08/07/20, WS