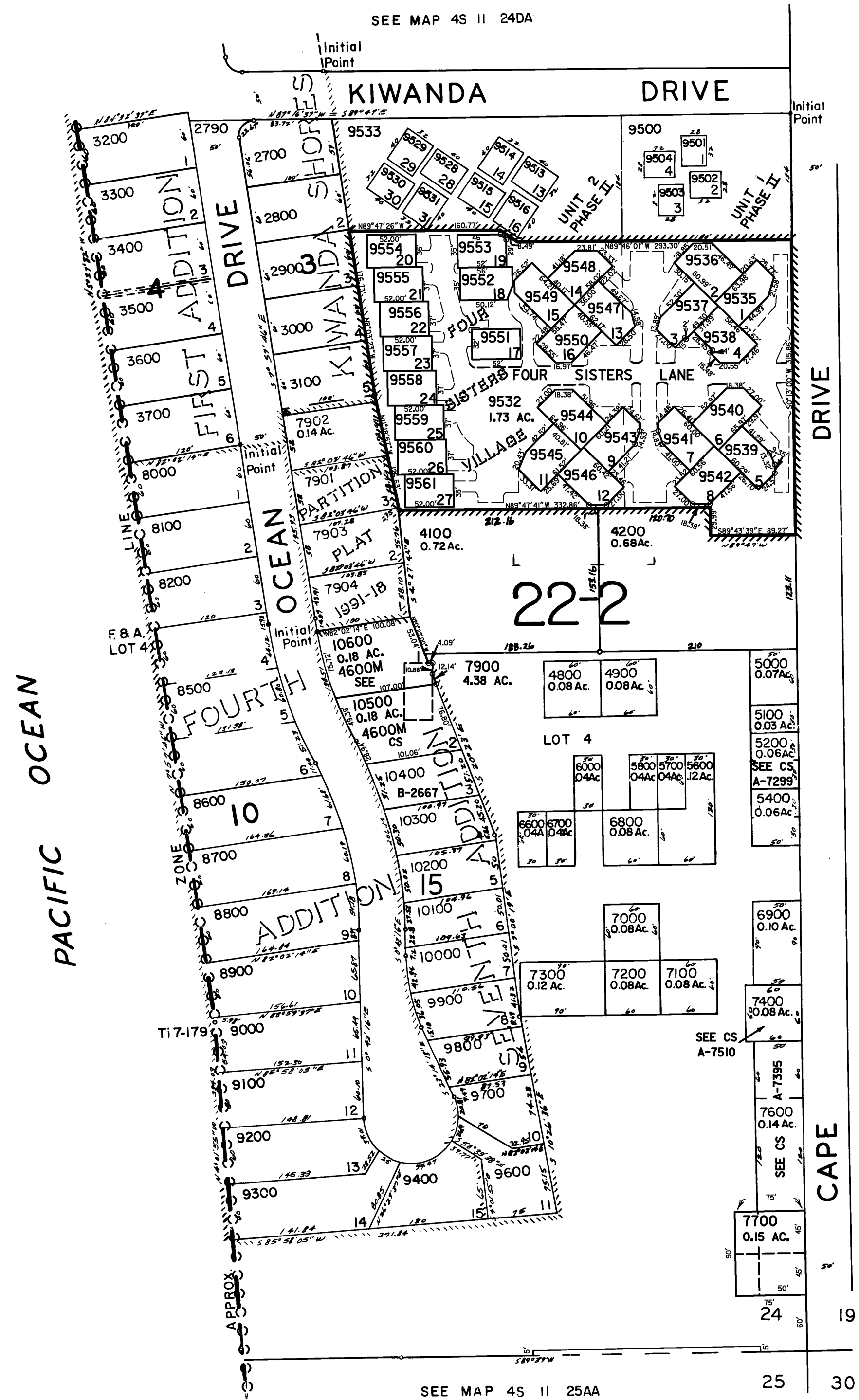


THIS MAP WAS PREPARED FOR  
ASSESSMENT PURPOSE ONLY

SE1/4 SE1/4 SEC. 24 T.4S. R.1W. W.M.  
TILLAMOOK COUNTY

1" = 100'

4S II 24DD  
KIWANDA  
SHORES



- CANCELLED NO.  
100-2600  
3800  
3900  
4000  
4300  
4400  
4500  
4700  
5300  
5500  
5900  
6100  
6200  
6300  
6400  
6500  
7500  
7601  
7800  
8300  
8400  
9505-9512  
9517-9524  
9526  
9527  
9534

SEE MAP 4S IO 19CC

4S II 24DD  
REVISED 02/12/04, SA