

**MINUTES – TILLAMOOK COUNTY BOARD OF COMMISSIONERS' MEETING**  
Wednesday, March 12, 2008  
Page 1

**FILED**  
*[Signature]*  
MAY 6 2008  
10:30 AM  
TASSI O'NEIL  
COUNTY CLERK

**COMMISSIONERS PRESENT:**

Charles J. Hurliman, Chair  
Tim Josi, Vice-Chair  
Mark Labhart, Commissioner

**STAFF PRESENT:**

Paul Levesque, Facilities, Fleet and  
Contracts Director  
William K. Sargent, County Counsel

**STAFF PRESENT FOR PORTIONS OF THE MEETING:** None

**GUESTS:** Gus Meyer, John Sandusky and Matt Mumford.

**CALL TO ORDER:** By Chair Hurliman at 6:30 p.m. in Commissioners' Meeting Room A.

**ITEM NO. 1: WELCOME & REQUEST TO SIGN GUEST LIST:** Chair Hurliman welcomed everyone and reminded them to sign the guest list.

**ITEM NO. 2: PUBLIC COMMENT – NON-AGENDA ITEMS:** There were no public comments at this time.

**ITEM NO. 3: PRESENTATION ON TILLAMOOK TOWN SQUARE VISITORS' INFORMATION CENTER:** Matt Mumford provided slides of the latest iteration of the proposed Transit Center (see attached). It has been scaled back to fit within the budget. It will be known as Davy Square and will save the Davy Tree. It will look like City Hall. He showed the floor plan consisting of restrooms, waiting room and office. It is planned for completion by late summer. Commissioner Labhart said this will be a nice needed addition.

Chair Hurliman recessed the meeting at 6:43 p.m. and reconvened it at 6:46 p.m.

**ITEM NO. 4: ANNUAL LIQUOR LICENSE RENEWAL APPLICATIONS FOR BAYSIDE GARDENS SHELL & GROCERY; BEAVER SHELL & GROCERY; CLOVERDALE PHARMACY; FOX GROCERY; GRATEFUL BREAD; LEE'S CAMP STORE; LIGHT HOUSE RESTAURANT & WATERING HOLE PUB; MICHKO'S; MOHLER COOPERATIVE STORE; PACIFIC CITY SHELL & GROCERY; PC HOMETOWN MARKET AND SPORTSMAN'S PUB N GRUB:** A motion was made by Vice-Chair Josi to approve the consent calendar. The motion was seconded by Commissioner Labhart. The motion carried with three (3) aye votes.

**MINUTES – TILLAMOOK COUNTY BOARD OF COMMISSIONERS' MEETING**  
**Wednesday, March 12, 2008**  
**Page 2**

**ITEM NO. 5: CONSIDERATION OF AMENDMENT NO. 1 TO FACILITY GRANT COOPERATIVE AGREEMENT WITH THE OREGON STATE MARINE BOARD (FACILITY GRANT NO. 1328) FOR THE NEHALEM BAY BOAT LAUNCH FLOATS AND DREDGING PROJECT (COUNTY CONTRACT #3854):** Vice-Chair Josi said it provides an additional Sixty-Three Thousand (\$63,000) Dollars from the Oregon State Marine Board as they underestimated the initial costs.

Vice-Chair Josi made a motion to approve and sign Amendment No. 1 to the Facility Grant Cooperative Agreement with the Oregon State Marine Board for the Nehalem Bay Boat Launch Floats and Dredging Project. The motion was seconded by Commissioner Labhart. The motion carried with three (3) aye votes. Chair Hurliman signed the Amendment.

**ITEM NO. 6: CONSIDERATION OF CHANGE ORDER #1 TO PREVAILING WAGE RATE CONTRACT FOR CONSTRUCTION WITH BIG RIVER CONSTRUCTION INC. (CONTRACT #3866) FOR THE CEDAR CREEK CHILD CARE CENTER SITE AND UTILITIES PROJECT:** John Sandusky said the site work began late in the fall. With the advent of winter rains, additional rock was needed in an amount of Twenty Five Thousand Two Hundred Eighty-Nine – 67/100 (\$25,289.67) Dollars, including filter fabric and drainage basin.

Commissioner Labhart made a motion to approve and sign Change Order #1 to the Prevailing Wage Rate Contract for Construction with Big River Construction Inc. for the Cedar Creek Child Care Center Site and Utilities Project. Vice-Chair Josi seconded the motion. The motion carried with three (3) aye votes. The Commissioners signed the Change Order.

**ITEM NO. 7: CONSIDERATION OF CHANGE ORDER NO. 5 TO PERSONAL SERVICES AGREEMENT #3491 WITH DONALD G. AVERILL RECYCLING, INC. FOR TILLAMOOK TRANSFER STATION OPERATIONS FOR ANNUAL WASTE FEE ADJUSTMENT:** Paul Levesque said Averill's contract allows an increase at eighty (80%) of the Consumer Price Index (CPI). This will not cause any increase in tipping fees.

A motion was made by Vice-Chair Josi to approve and sign Change Order No. 5 to the Personal Services Agreement with Donald G. Averill Recycling, Inc. for the Tillamook Transfer Station operations for annual waste fee adjustment. Commissioner Labhart seconded the motion. The motion carried with three (3) aye votes. The Commissioners signed the Change Order.

**MINUTES – TILLAMOOK COUNTY BOARD OF COMMISSIONERS' MEETING**  
**Wednesday, March 12, 2008**  
**Page 3**

**ITEM NO. 8: CONSIDERATION OF A NOTICE OF INTENT TO AWARD A CONTRACT TO CONCRETE ENTERPRISES FOR THE TRASK RIVER (JOHNSON) BRIDGE REPLACEMENT PROJECT:** Mr. Levesque gave a history of the Oregon Transportation Investment Act (OTIA) bridge projects in Tillamook County and the prior bid on Johnson Bridge that was over budget. The project was redesigned to eliminate the road approaches. The current bid was within the budget.

Commissioner Labhart made a motion to approve and sign the Notice of Intent to Award a Contract to Concrete Enterprises for the Trask River (Johnson) Bridge Replacement Project. Vice-Chair Josi seconded the motion. The motion carried with three (3) aye votes. The Commissioners signed Order #08-035.

**ITEM NO. 9: CONSIDERATION OF A RESOLUTION ENCOURAGING LOCAL, STATE AND FEDERAL AGENCIES TO ENSURE THE SWIFT RESTORATION OF RAIL SERVICE IN TILLAMOOK COUNTY:** Mr. Levesque said this Resolution made findings about the importance of the rail to the local industry, the economy and family wage jobs.

A motion was made by Commissioner Labhart to approve and sign the Resolution encouraging local, State and Federal agencies to ensure the swift restoration of rail service in Tillamook County. The motion carried with three (3) aye votes. The Commissioners signed Resolution #08-002.

**UNSCHEDULED:** Mr. Levesque outlined a proposal by the Netarts Oceanside Sanitary District) (NOSD) through its engineer to construct a new ocean sewer outfall pipe. It will involve the construction of a forty-two hundred (4,200) linear foot high density pipe, fourteen (14") inches in diameter. They would like permission to construct the pipe on the Bay Ocean Peninsula Road between the two (2) gates. It would take two to three (2 – 3) weeks. They then want to close the parking lot for one (1) day, putting the pipe on rollers and float it across Bayocean Lake, across the beach and into the surf where it will be towed into place by a tug boat. The use of the road for construction will be off to the side, keeping the lane opened for emergency vehicles. The road is not used by the public. The Commissioners discussed conditions such as advance notice to the media on the parking lot closure. They had no objection to the use provided that NOSD obtained any required permits, indemnified the county, repaired any damages and kept the road open to emergency vehicles.

**ITEM NO. 10: BOARD CONCERNS – NON-AGENDA ITEMS & ANNOUNCEMENTS:**  
Commissioner Labhart read the announcements.

**MINUTES – TILLAMOOK COUNTY BOARD OF COMMISSIONERS' MEETING**  
**Wednesday, March 12, 2008**  
**Page 4**

**ITEM NO. 11: PUBLIC COMMENTS:** There were no public comments today.

There being no further business Chair Hurliman adjourned the meeting at 7:00 p.m.

**RESPECTFULLY SUBMITTED** this 6<sup>th</sup> day of May, 2008.

County Clerk: Tassi O'Neil

Susan L. Becraft  
Susan Becraft, Recording Secretary  
& Special Deputy

**APPROVED BY:**

Charles Hurliman Chair  
Kimberly Vice-Chair

Mark Zallat  
Commissioner



**NOTICE OF MEETING AND AGENDA**  
**of the**  
**TILLAMOOK COUNTY BOARD OF COMMISSIONERS**  
Also sitting as the Board of the  
**SOLID WASTE SERVICE DISTRICT &**  
**THE 4-H AND EXTENSION SERVICE DISTRICT**  
to be held

**Wednesday, March 12, 2008, at 6:30 p.m.**

**Commissioners' Meeting Room A**  
County Courthouse, 201 Laurel Avenue  
Tillamook, Oregon

**BOARD OF COMMISSIONERS**

Charles J. Hurliman, Chair  
E-mail: [churlima@co.tillamook.or.us](mailto:churlima@co.tillamook.or.us)

Tim Josi, Vice-Chair  
E-mail: [tjosi@co.tillamook.or.us](mailto:tjosi@co.tillamook.or.us)

Mark Labhart, Commissioner  
E-mail: [mlabhart@co.tillamook.or.us](mailto:mlabhart@co.tillamook.or.us)

201 Laurel Avenue  
Tillamook, Oregon 97141  
Phone: (503) 842-3403 FAX: (503) 842-1384

ANY QUESTIONS? Contact  
Paul Levesque (503) 842-1809  
E-mail: [plevesqu@co.tillamook.or.us](mailto:plevesqu@co.tillamook.or.us)

COUNTY WEBSITE: <http://www.co.tillamook.or.us>

WATCH THIS MEETING ON TV: TLCTV Channel 35

Monday – 1:00 p.m.  
Thursday – 1:00 p.m.  
Sunday – 1:00 p.m.

Tuesday – 8:00 p.m.  
Friday – 8:00 p.m.

Wednesday – 9:00 a.m.  
Saturday – 9:00 a.m.

NOTE: The Board of Commissioners reserves the right to recess to Executive Session as may be required at any time during this meeting, pursuant to ORS 192.660(1).

NOTE: The Tillamook County Courthouse is accessible to persons with disabilities. If special accommodations are needed for persons with hearing, visual or manual impairments who wish to participate in the meeting, please contact (503) 842-3403 at least 24 hours prior to the meeting so that the appropriate communications assistance can be arranged.

**CALL TO ORDER: Wednesday, March 12, 2008 6:30 p.m.**

**BOARD OF COMMISSIONERS**

1. Welcome & Request to Sign Guest List
2. Public Comment – Non-Agenda Items
3. Presentation on Tillamook Town Square Visitors' Information Center/Matt Mumford

**CONSENT CALENDAR**

4. Annual Liquor License Renewal Applications for Bayside Gardens Shell & Grocery; Beaver Shell & Grocery; Cloverdale Pharmacy; Fox Grocery; Grateful Bread; Lee's Camp Store; Light House Restaurant & Watering Hole Pub; Michko's; Mohler Cooperative Store; Pacific City Shell & Grocery; PC Hometown Market and Sportsman's Pub N Grub

**LEGISLATIVE – ADMINISTRATIVE**

5. Consideration of Amendment No. 1 to Facility Grant Cooperative Agreement with the Oregon State Marine Board (Facility Grant No. 1328) for the Nehalem Bay Boat Launch Floats and Dredging Project (County Contract #3854)/Del Schleichert
6. Consideration of Change Order #1 to Prevailing Wage Rate Contract for Construction with Big River Construction Inc. (Contract #3866) for the Cedar Creek Child Care Center Site and Utilities Project/John Sandusky
7. Consideration of Change Order No. 5 to Personal Services Agreement #3491 with Donald G. Averill Recycling, Inc. for Tillamook Transfer Station Operations for Annual Waste Fee Adjustment/Liane Welch
8. Consideration of a Notice of Intent to Award a Contract to Concrete Enterprises for the Trask River (Johnson) Bridge Replacement Project/Liane Welch
9. Consideration of a Resolution Encouraging Local, State and Federal Agencies to Ensure the Swift Restoration of Rail Service in Tillamook County/Bob Van Borssum
10. Board Concerns – Non-Agenda Items & Announcements
11. Public Comments

**ADJOURNMENT**

**BOARD MEETINGS AND ANNOUNCEMENTS**

There will be **no** Staff Meeting on **Monday, March 24, 2008** or Commissioners' Regular Business Meeting on **Wednesday, March 26, 2008** due to the lack of a quorum.

The Commissioners and the County's Budget Officer will hold public Budget Committee Workshops to hear presentations from County Departments and Non-Department Agencies regarding their 2008-09 Budget requests. The Workshops will be held on **Tuesday, April 15, 2008 at 1:00 p.m.**; **Wednesday, April 16, 2008 at 1:00 p.m.**; **Thursday, April 17, 2008 at 1:00 p.m.** and **Friday, April 18, 2008 at 9:00 a.m.** in the Commissioners' Meeting Room of the Tillamook County Courthouse, 201 Laurel Avenue, Tillamook.

The Commissioners' evening meeting schedule is as follows:

April 16, 2008  
May 21, 2008

Manzanita City Hall  
Cape Kiwanda Community Center

All evening meetings will begin at 6:30 p.m.

BOARD OF COMMISSIONERS'  
MEETING

Wednesday, March 12, 2008

PLEASE PRINT

Name Address Item of Interest

Gus Meyer		General
JOHN SANDUSKY	CARE	ITEM 4
Matt Mumford	TCID	Tue Transition


(Please use reverse if necessary)



# Tillamook Town Center

---

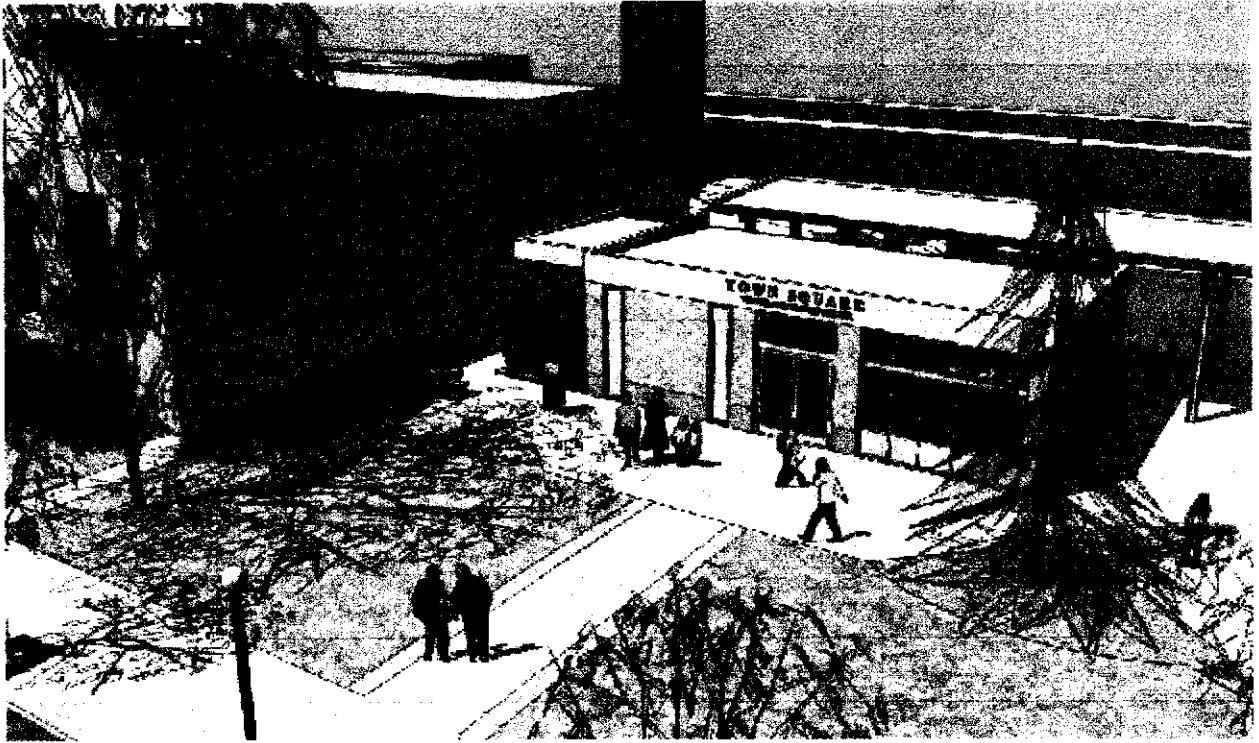


  
Planning Solutions  
Architecture, Inc.

East  
**Schematic Elevations**

# Tillamook Town Center

---



  
Planning Solutions  
Architecture, Inc.

East  
**Schematic Elevations**

# Tillamook Town Center

---



Planning Solutions  
Architecture, Inc.


NORTH

**Schematic Elevations**

# Tillamook Town Center

---

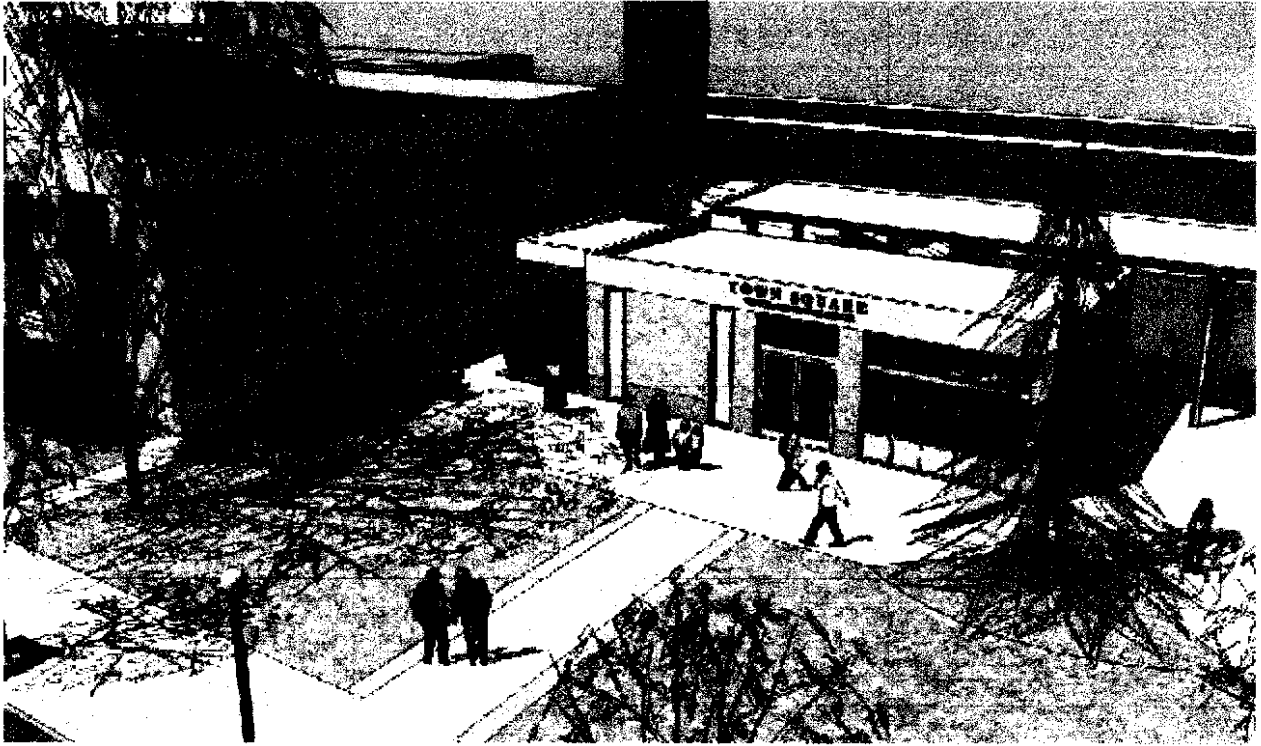


  
Planning Solutions  
Architecture, Inc.

East  
**Schematic Elevations**

# Tillamook Town Center

---

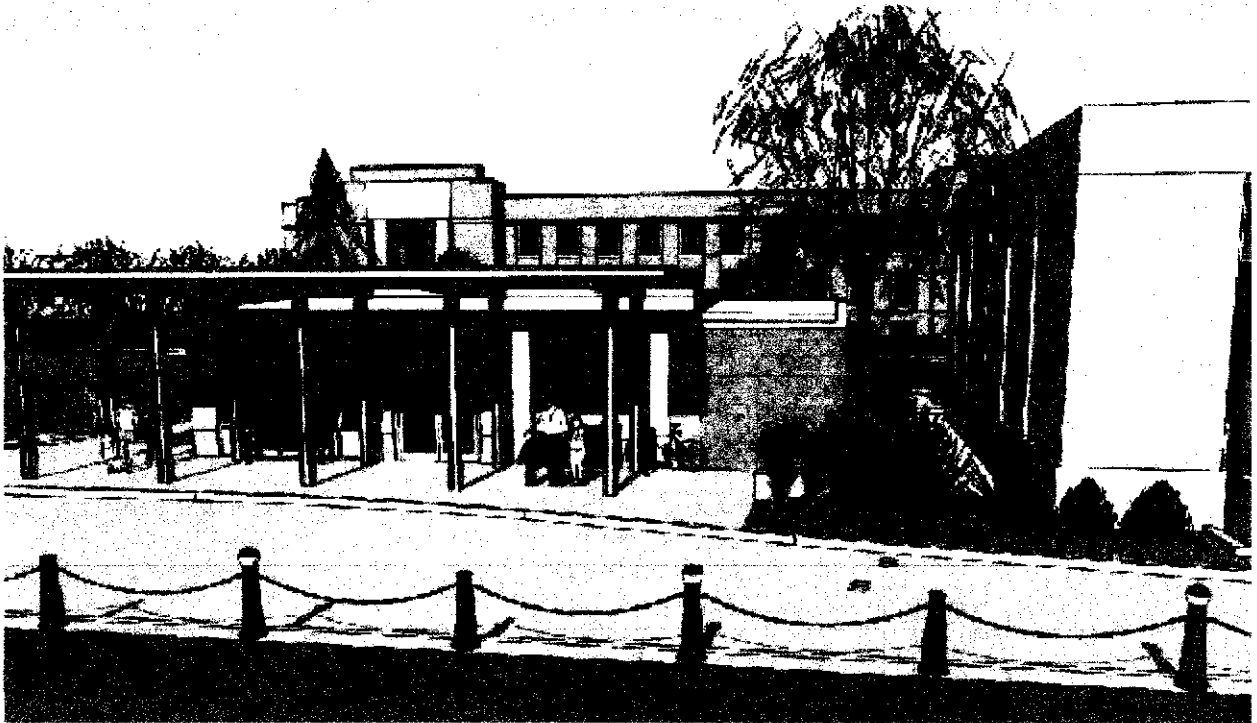



  
Planning Solutions  
Architecture, Inc.

East  
**Schematic Elevations**

# Tillamook Town Center

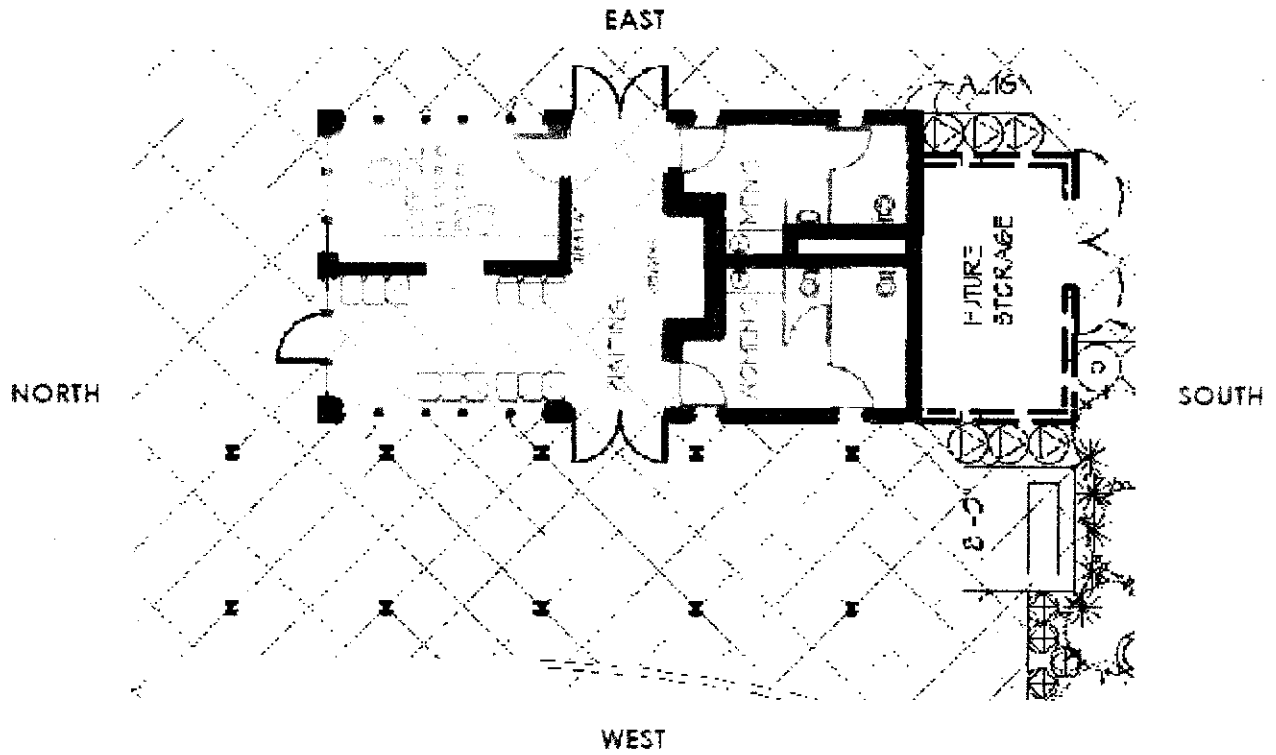
---




  
Planning Solutions  
Architecture, Inc.

West  
Schematic Elevations

# Tillamook Town Center



  
Planning Solutions  
Architecture, Inc.

**Schematic Floor Plan**



**PUBLIC WORKS DEPARTMENT**

*Office of Solid Waste  
Waste Prevention and Recycling*

503 Marolf Loop Road  
Tillamook, Oregon 97141  
(503) 815-3975  
FAX (503) 842-6473  
Email: [recycle@co.tillamook.or.us](mailto:recycle@co.tillamook.or.us)  
TTY Oregon Relay Service

*Land of Cheese, Trees and Ocean Breeze*

March 3, 2008

TO: BOARD OF COMMISSIONERS  
FROM: KATHY SCHWINCK, SOLID WASTE COORDINATOR  
SUBJECT: TILLAMOOK TRANSFER STATION - CHANGER ORDER # 5

Change Order #5 for the Tillamook Transfer Station contract adjusts the price per ton rate for payment to the Contractor. The rate of \$48.50 per ton was the successful bid provided by Don Averill Recycling, Inc. establishing the contract rate. The Contract provides for an annual adjustment to the per ton rate for payment starting July 1, 2005. The new price per ton rate for Contractor payment starting July 1, 2008 is \$53.93.

The specific language/detail of this "Waste Fee Adjustment" to the Contract can be found in the RFP, Section 6.5 (b).

The Contract start date for the Tillamook Transfer Station was January 2004. The Waste Fee Adjustment is to be executed after the initial year of the contract for a start date of July 1, 2005. Each year thereafter the Waste Fee Adjustment is calculated to become effective on July 1st. The Waste Fee Adjustment amount uses the Consumer Price Index (CPI)- All Urban Consumers as a starting point to determine an annual adjustment to the price per ton rate. Don Averill Recycling, Inc. proposed an 80% adjustment of the Consumer Index.

Calculation for the adjustment is done based on the following:

- The CPI as of January 2004 (the base month & year of the contract) : 185.2
- The CPI for January 2008 (from the March report): 211.08
- The difference 25.88
- This difference (25.88 ) divided by the base year (185.2): .139
- Percent of Change (.14) times proposed percentage of CPI (.80): .112
- Base Contract Rate \$48.50 times ( .112 ): \$ 5.43
- New Price per ton rate \$48.50 plus \$5.43 : \$53.93

If you would like additional detail or have any questions please contact me at 815-3975 or ext. 3116.







4000 Blimp Blvd., Tillamook, Oregon 97141

Phone: (503) 842-2419 Fax: (503) 842-3880



To: Tim Jost-Till County Commissioner	From: Robert Van Borssum
Fax: 503-842-1384	Pages: 4 Including Cover Sheet
Phone: 503-842-3403	Date: 3/5/2008
Re: POTB RR Resolution Support	cc:

Urgent   
  For Review   
  Please Comment   
  Please Reply   
  Please Recycle

● Comments:

CITY OF BAY CITY  
RESOLUTION NO. 08-02

A RESOLUTION IN SUPPORT OF RESTORING RAILROAD SERVICE TO  
TILLAMOOK COUNTY

WHEREAS, the December 2007 storm washed out large portions of the Port of Tillamook Bay Railroad's rail bed in the Salmonberry River canyon in the mountains east of Wheeler, shutting down the railroad and leaving our three sawmills without an affordable means of shipping lumber to the nation's markets and forcing our local dairy farmers to pay much higher costs for feed grain that must now be brought in by truck.

WHEREAS, without a speedy restoration of an affordable means of shipping heavy industrial loads in and out of Tillamook County, the core components of our local economy could be seriously damaged, threatening the county's family-wage jobs and the quality of life for everyone.

WHEREAS:

- This rail system is the sole provider of cost-efficient transportation of timber, grain products and raw materials both to and from Tillamook County.
- The industries served by the railroad are the largest employers in Tillamook County.
- Tillamook's three lumber mills are key railroad customers. Prior to the storm, they used the Port of Tillamook Bay Railroad to ship their processed lumber out to market.
- Tillamook's Hampton Affiliates mill employs 225 people, with an annual payroll of \$15 million and a total annual economic impact of approximately \$60 million. The mill ships 1,800 carloads of lumber via the railroad each year. Rail service is critical to maintaining the company's competitive position. Company officials have stated that trucking its lumber puts Hampton in an uncompetitive position globally.
- The Weyerhaeuser Hardwoods mill in Garibaldi also ships via the POTB Railroad. The mill processes 32 million board feet of hardwood annually and ships half of it via the Port of Tillamook Bay railroad. Switching to trucks could cost the mill up to \$320,000 a year, say mill managers. It is very difficult to attract enough trucks to take their loads.
- Also affected by the storm damage is WCI Cable, a wholesale provider of fiber-optic communications service connecting major Alaska markets to the continental United States. It operates oceanic cables that make landfall at Nedonna Beach in Tillamook County. One of its cables followed the POTB railroad right of way. The line sustained damage along nine miles of its route, with at least one "hard break" in the Salmonberry River canyon. In addition,

# **Port of Tillamook Bay**

4000 Blimp Blvd., Tillamook, OR 97141, (503) 842-2413

[www.potb.org](http://www.potb.org)

Port Director Robert H. (Bob) Van Borssum, [rhvb@potb.org](mailto:rhvb@potb.org)

March 14, 2008

FOR IMMEDIATE RELEASE

## **CO<sub>2</sub> emissions increased dramatically by closure of POTB Railroad**

Restoration of service on the Port of Tillamook Bay Railroad would not only have a positive effect on local shippers and the economy, but also on the environment. Data from the U.S. Environmental Protection Agency indicates that the increased truck traffic resulting from the rail closure has a huge impact on CO<sub>2</sub> emissions, a component of global climate change.

According to Hampton, Stimson, Weyerhaeuser and CHS Feedmill, the closing of the Port of Tillamook Bay Railway will add a total of approximately 15,500 truck trips into and out of Tillamook County annually. These trucks travel 75 miles to transfer points in Portland and Salem.

Since the average truck trip is 75 miles and the average truck gets a maximum of 6 miles per gallon of diesel fuel, that is roughly 12.5 gallons of diesel fuel expended per trip.

According to the U.S. Environmental Protection Agency, a single gallon of diesel fuel contributes 22.2 pounds of CO<sub>2</sub> to the air. Thus, a one-way truck trip of 75 miles would generate 277.5 pounds of CO<sub>2</sub>. Multiplied by 15,500 truck trips per year, this equals 4.3 million pounds of CO<sub>2</sub> generated annually by the trucks that will be hauling what was once hauled by the Port of Tillamook Bay Railroad.

It is estimated that trains are from 4 to 9 times more fuel efficient than trucks at distances of less than 100 miles. Assuming that 80 percent of the emissions from trucks could be offset by using rail, that means that switching to trucks from the railroad adds an additional 3.44 million pounds of CO<sub>2</sub> to the atmosphere.

The U.S. Environmental Protection Agency has a carbon calculator on its Web site (<http://www.epa.gov/cleanenergy/energy-resources/calculator.html>). Using that site, it can be determined that 3.44 million pounds of CO<sub>2</sub> is equivalent to any one of the following:

- Annual greenhouse gas emissions from 571,726 passenger vehicles. That is the equivalent of approximately 40 percent of all the passenger cars registered in the state of Oregon.
- Carbon absorbed annually by 709,460 acres of pine or fir forests. That is an area equal to 90 percent of all the forestlands managed by the Oregon Department of Forestry and nearly twice the size of the Tillamook State Forest.
- CO<sub>2</sub> emissions from the electricity use of 413,460 homes for one year. (The City of Portland has approximately 250,000 homes, according to the U.S. Census)
- CO<sub>2</sub> emissions from the energy use of 275,518 homes for one year – more than all the homes within the city of Portland.
- Carbon absorbed by 80 million tree seedlings during their first 10 years of life. (That's as many seedlings as are replanted by Oregon foresters each year.)
- Carbon absorbed annually by 21,773 acres of rainforest preserved from deforestation.
- CO<sub>2</sub> emissions from burning 16,248 railcars' worth of coal.
- Greenhouse gas emissions avoided by recycling 1 million tons of waste instead of sending it to the landfill.
- Annual CO<sub>2</sub> emissions of 0.67 coal-fired power plants.