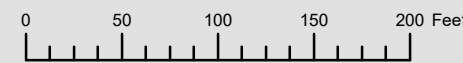


TILLAMOOK COUNTY

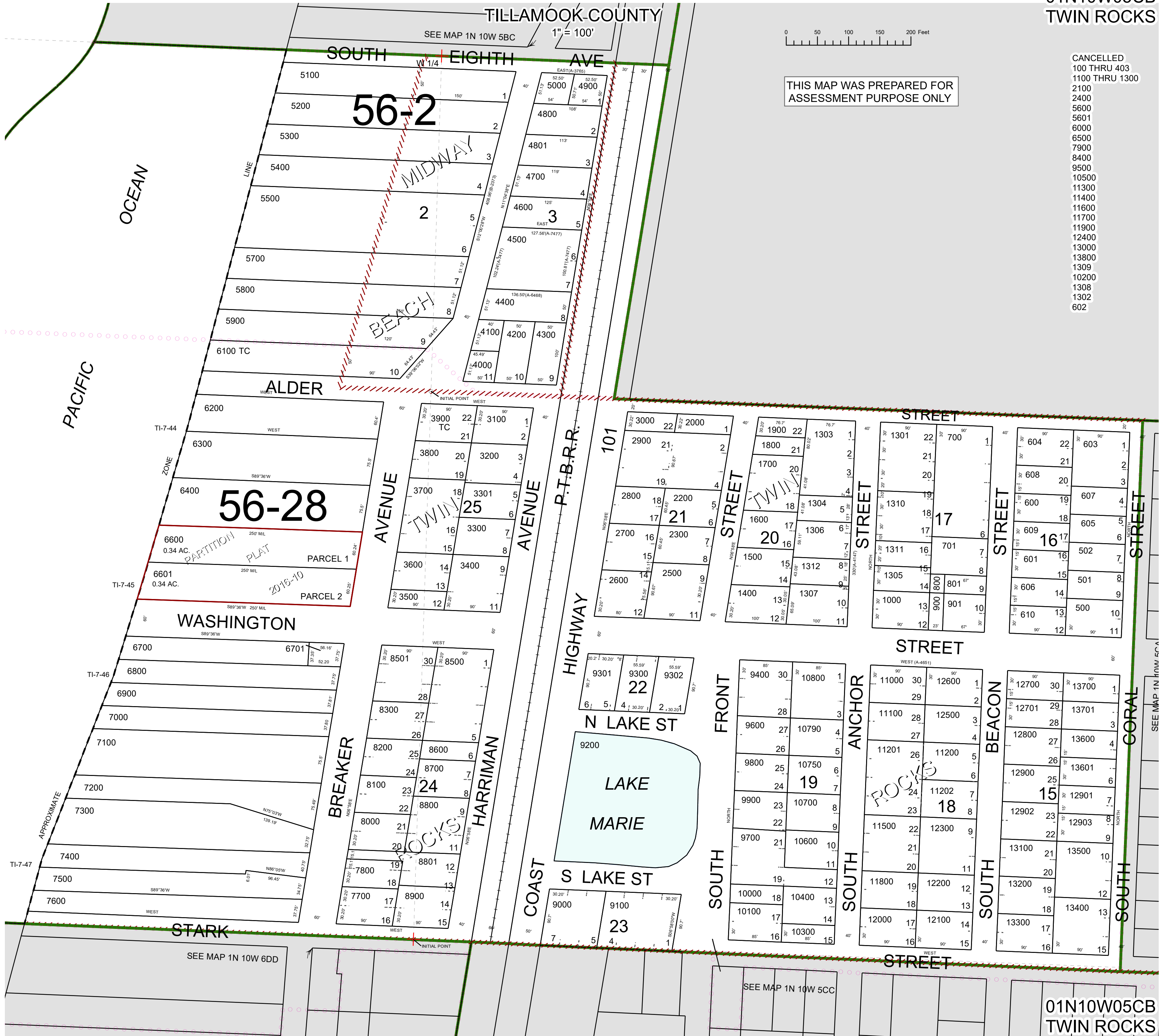
SEE MAP 1N 10W 5BC

1" = 100'



THIS MAP WAS PREPARED FOR ASSESSMENT PURPOSE ONLY

- CANCELLED
- 100 THRU 403
- 1100 THRU 1300
- 2100
- 2400
- 5600
- 6000
- 6500
- 7900
- 8400
- 9500
- 10500
- 11300
- 11400
- 11600
- 11700
- 11900
- 12400
- 13000
- 13800
- 1309
- 10200
- 1308
- 1302
- 602



SEE MAP 1N 10W 5C