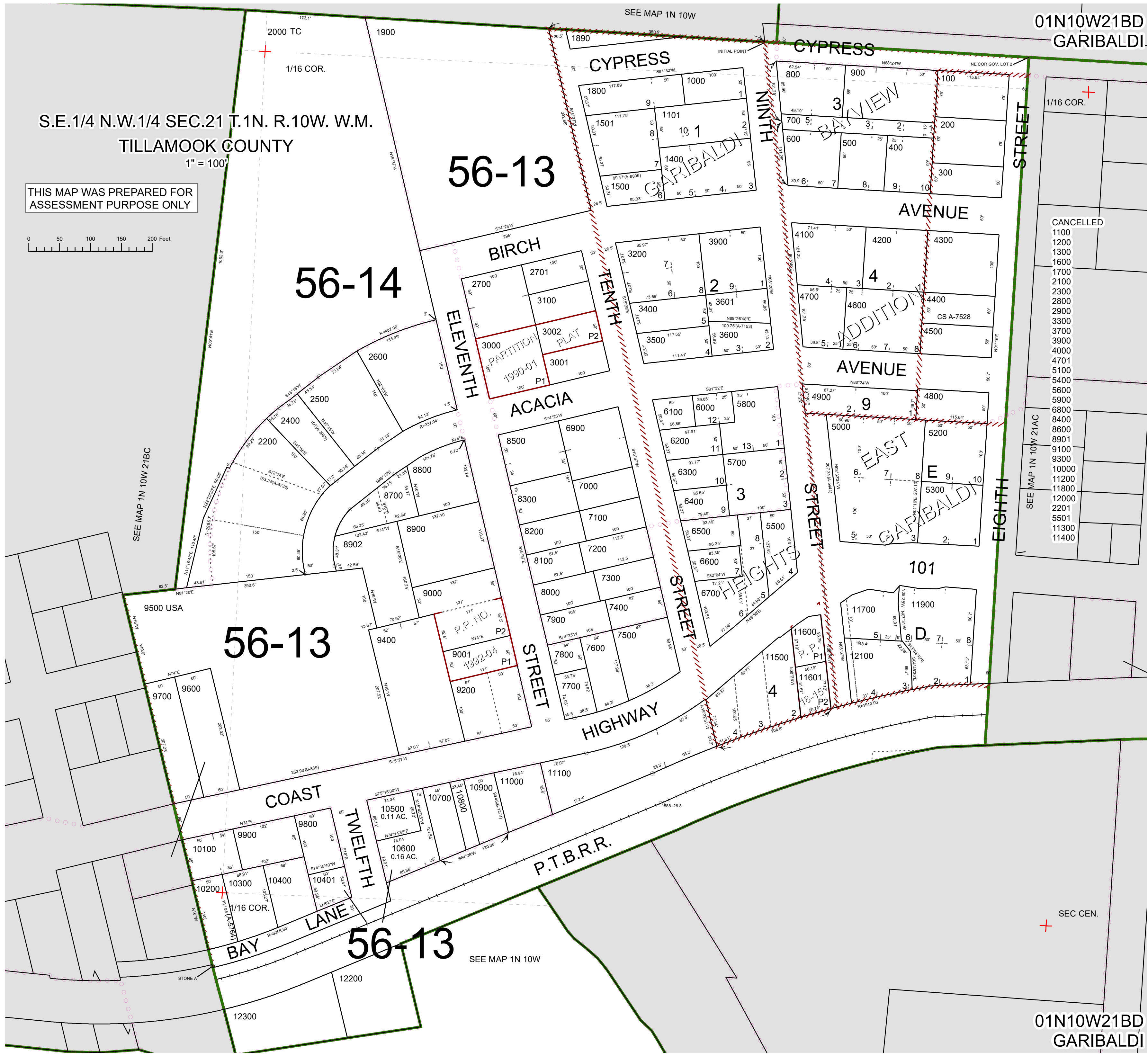
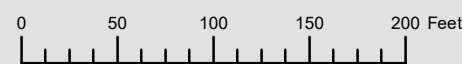


S.E.1/4 N.W.1/4 SEC.21 T.1N. R.10W. W.M.
TILLAMOOK COUNTY

1" = 100'

THIS MAP WAS PREPARED FOR
ASSESSMENT PURPOSE ONLY



01N10W21BD
GARIBALDI

CANCELLED

1100
1200
1300
1600
1700
2100
2300
2800
2900
3300
3700
3900
4000
4701
5100
5400
5600
5900
6800
8400
8600
8901
9100
9300
10000
11200
11800
12000
2201
5501
11300
11400

SEC CEN.

01N10W21BD
GARIBALDI