

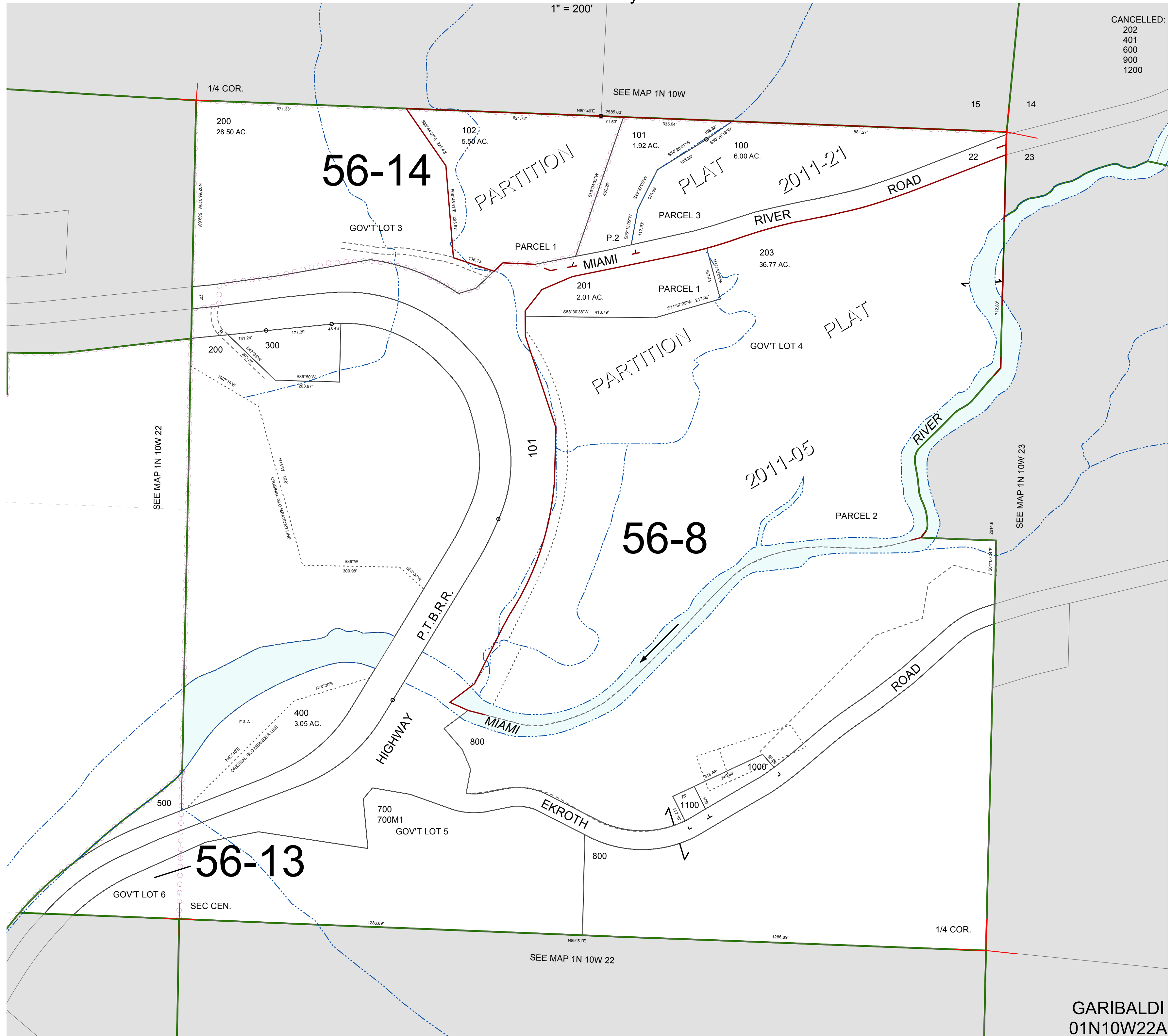
FOR ASSESSMENT AND TAXATION ONLY, NOT SUITABLE FOR LEGAL, ENGINEERING, OR SURVEY PURPOSES

N.E. 1/4 SEC. 22 T. 1N. R. 10W. W.M.  
Tillamook County

01N10W22A  
GARIBALDI

1" = 200'

CANCELLED:  
202  
401  
600  
900  
1200



GARIBALDI  
01N10W22A  
REVISED 3/27/17, WS