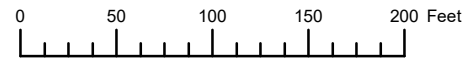


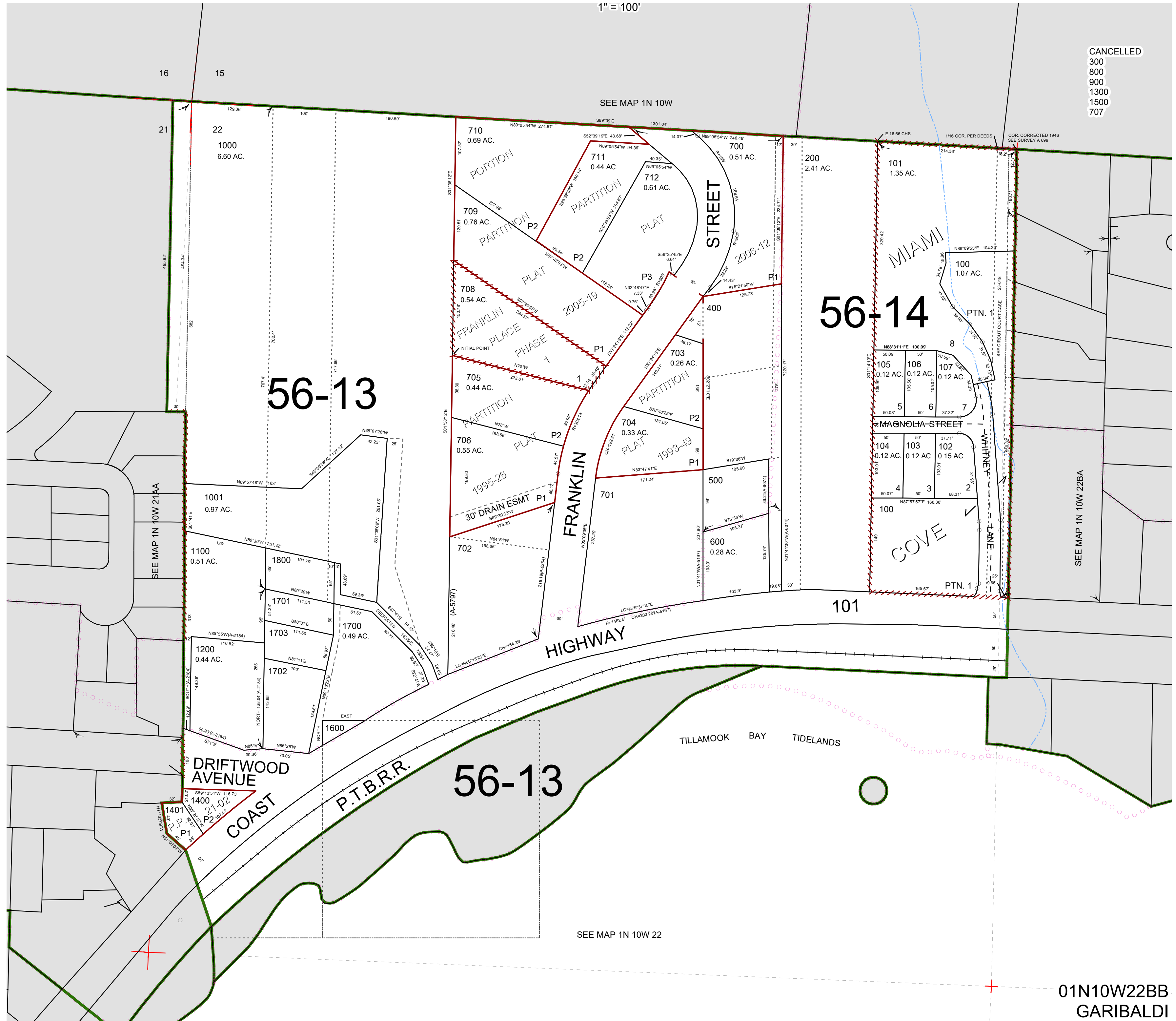
THIS MAP WAS PREPARED FOR ASSESSMENT PURPOSE ONLY



N.W.1/4 N.W.1/4 SEC.22 T.1N. R.10W. W.M.
TILLAMOOK COUNTY
1" = 100'

01N10W22BB
GARIBALDI

CANCELLED
300
800
900
1300
1500
707



SEE MAP 1N 10W 22BA

01N10W22BB
GARIBALDI

Revised 3/28/24, WS