

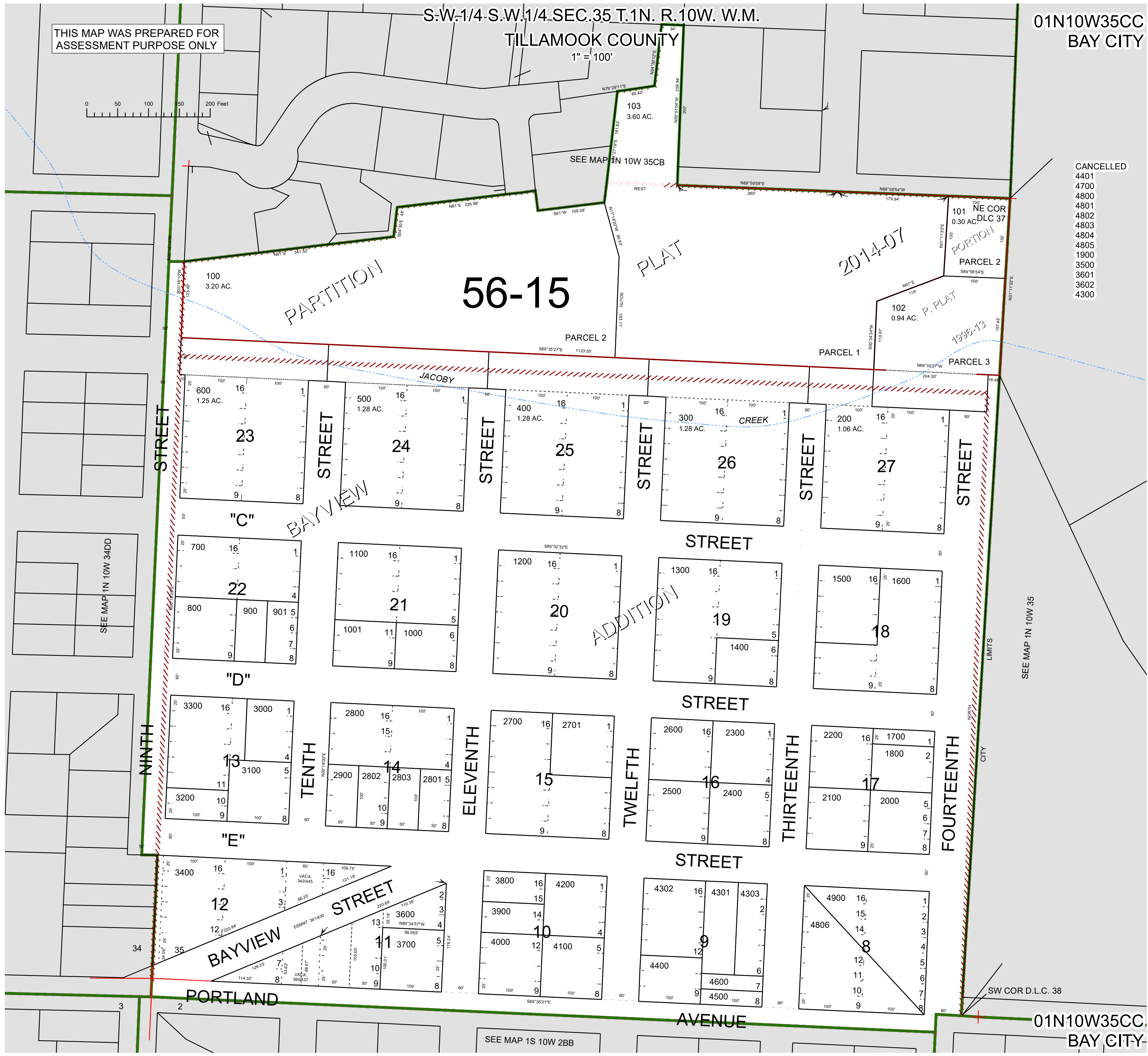
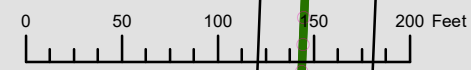
THIS MAP WAS PREPARED FOR ASSESSMENT PURPOSE ONLY

S.W.1/4 S.W.1/4 SEC.35 T.1N. R.10W. W.M.

TILLAMOOK COUNTY

1" = 100'

01N10W35CC  
BAY CITY



- CANCELLED
- 4401
- 4700
- 4800
- 4801
- 4802
- 4803
- 4804
- 4805
- 1900
- 3500
- 3601
- 3602
- 4300

SEE MAP IN 10W 35

SW COR D.L.C. 38

01N10W35CC  
BAY CITY