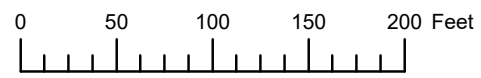


THIS MAP WAS PREPARED FOR ASSESSMENT PURPOSE ONLY

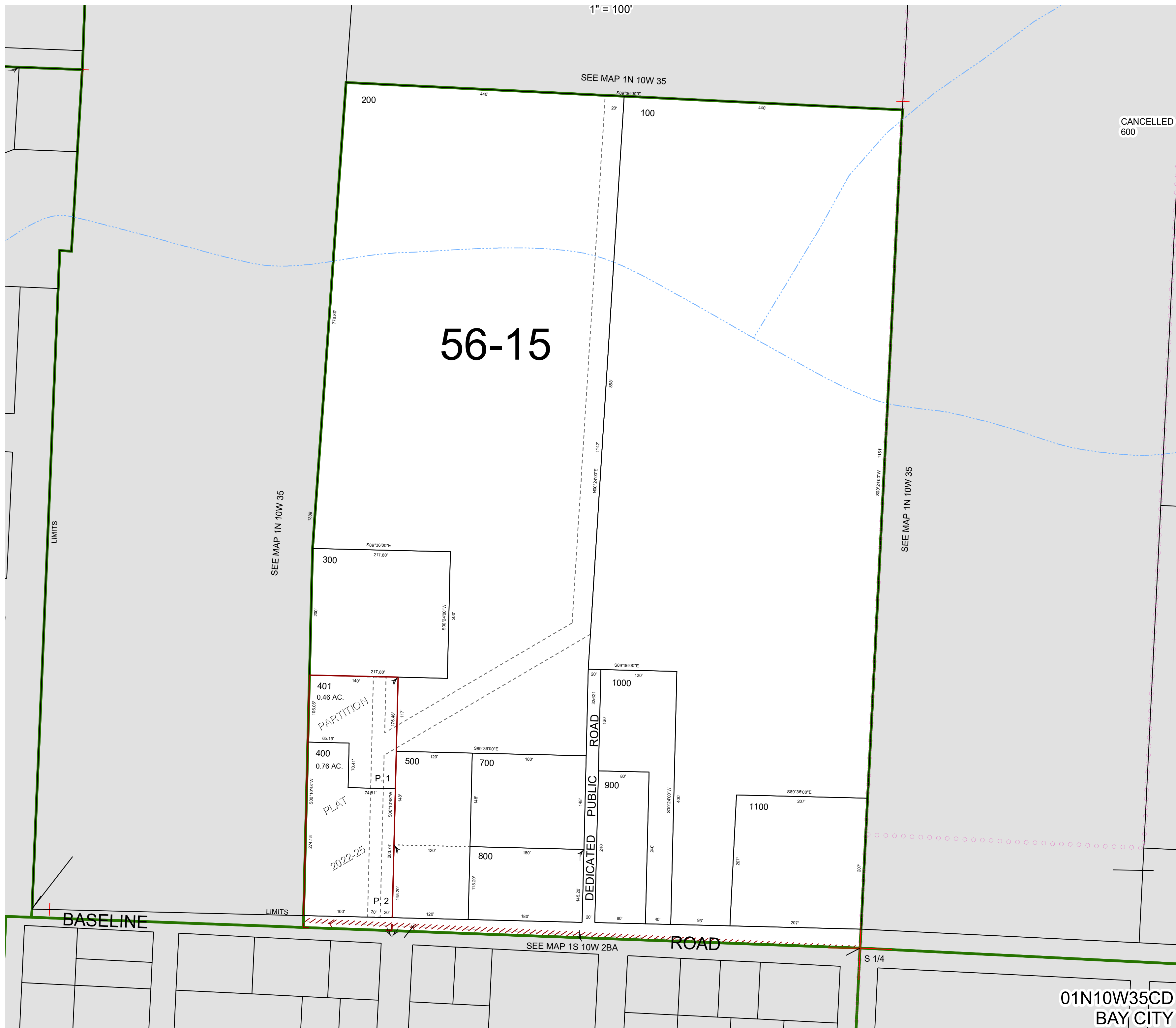


S.E. 1/4 S.W. 1/4 SEC. 35 T. 1N. R. 10W. W.M.

TILLAMOOK COUNTY

1" = 100'

01N10W35CD  
BAY CITY



CANCELLED  
600

01N10W35CD  
BAY CITY

Revised 12/30/22, WS