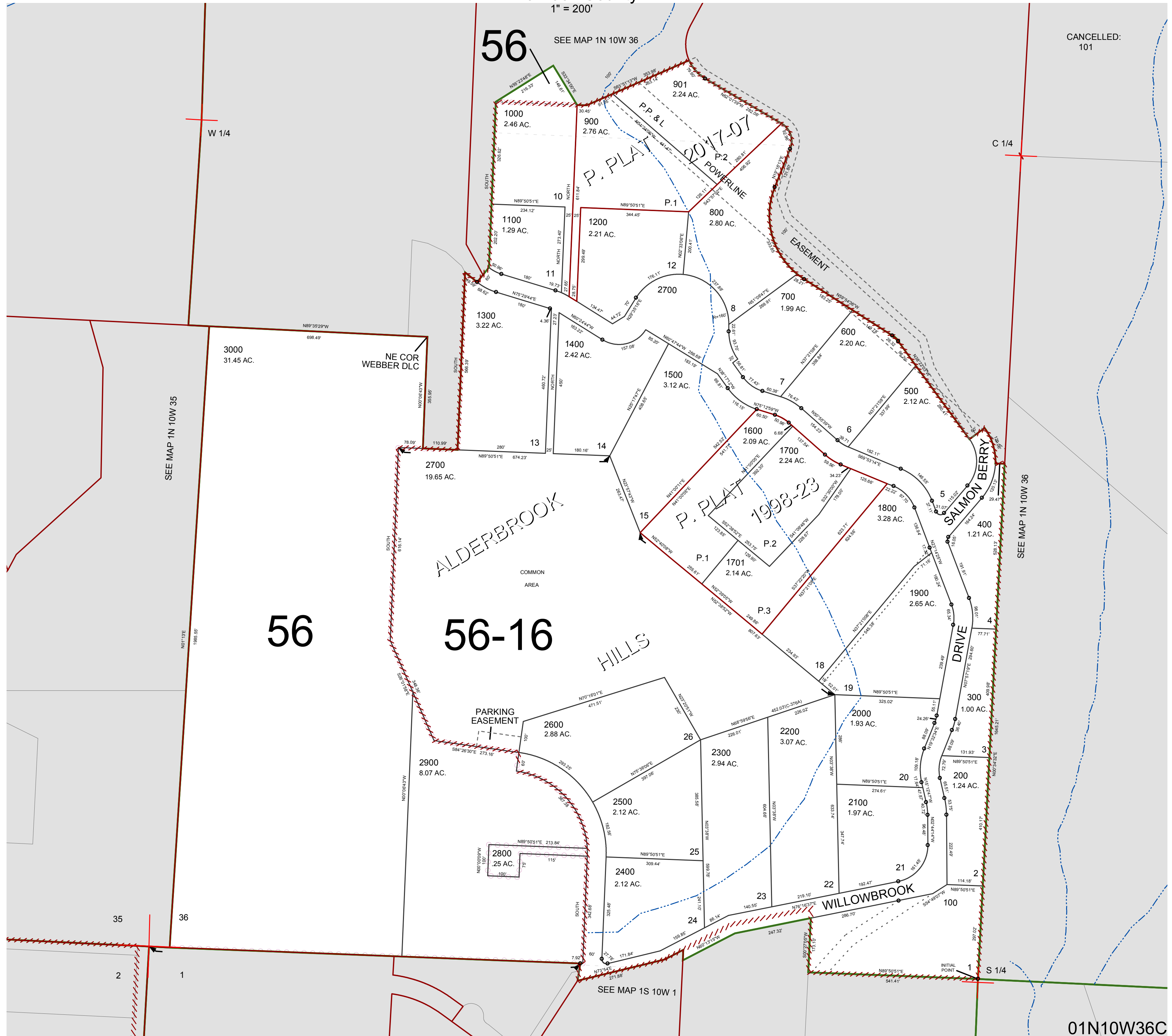


FOR ASSESSMENT AND TAXATION ONLY, NOT SUITABLE FOR LEGAL, ENGINEERING, OR SURVEY PURPOSES

S.W.1/4 SEC.36 T.1N. R.10W. W.M.
Tillamook County

1" = 200'

01N10W36C



CANCELLED:
101

01N10W36C
REVISED 8/29/17, WS