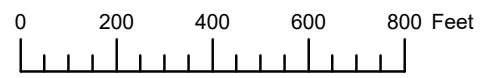


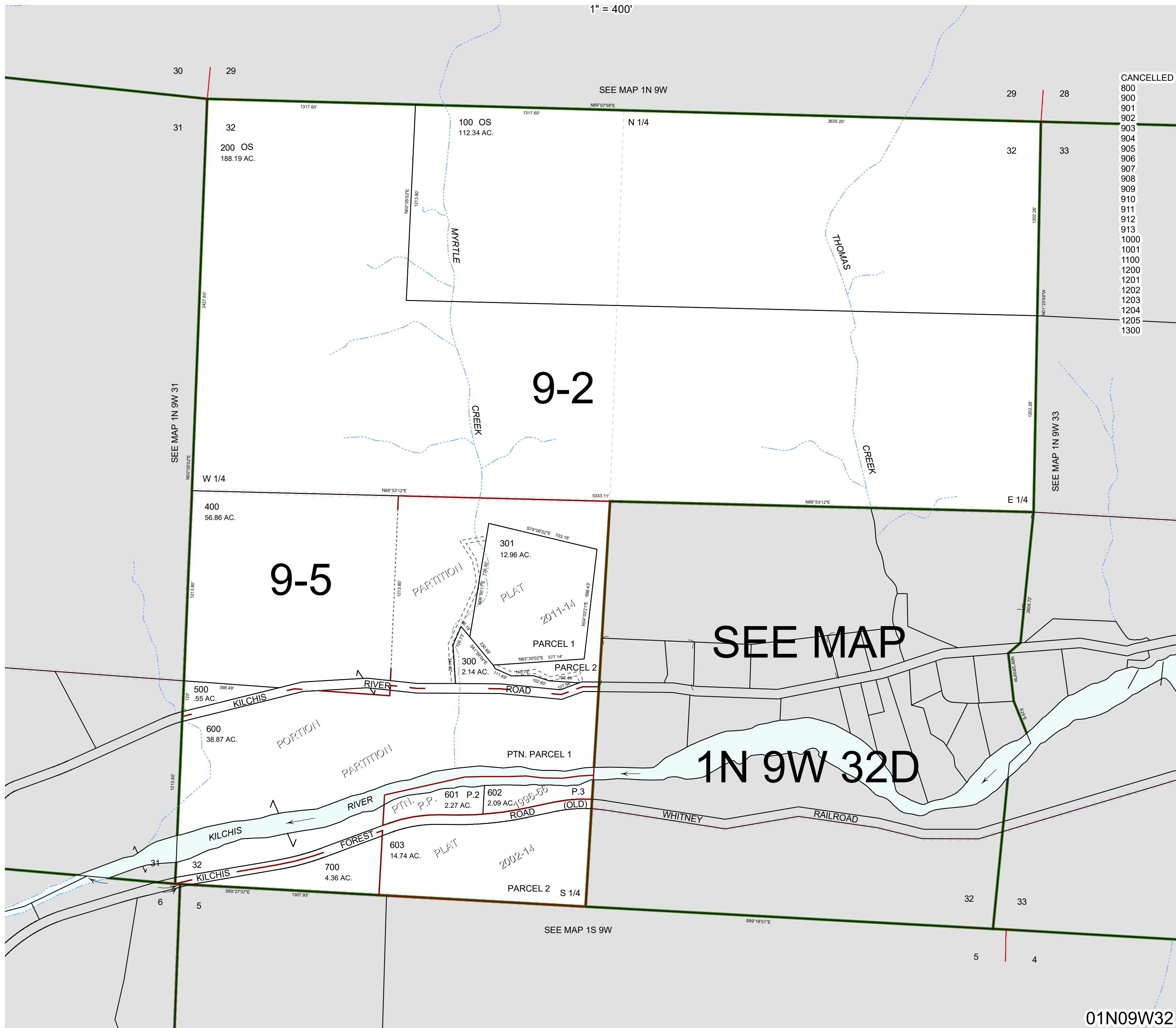
THIS MAP WAS PREPARED FOR ASSESSMENT PURPOSE ONLY



SECTION 32 T.1N. R.9W. W.M.
TILLAMOOK COUNTY

1" = 400'

01N09W32



- CANCELLED
- 800
- 900
- 901
- 902
- 903
- 904
- 905
- 906
- 907
- 908
- 909
- 910
- 911
- 912
- 913
- 1000
- 1001
- 1100
- 1200
- 1201
- 1202
- 1203
- 1204
- 1205
- 1300

SEE MAP

1N 9W 32D

01N09W32

Revised 4/28/23, WS