

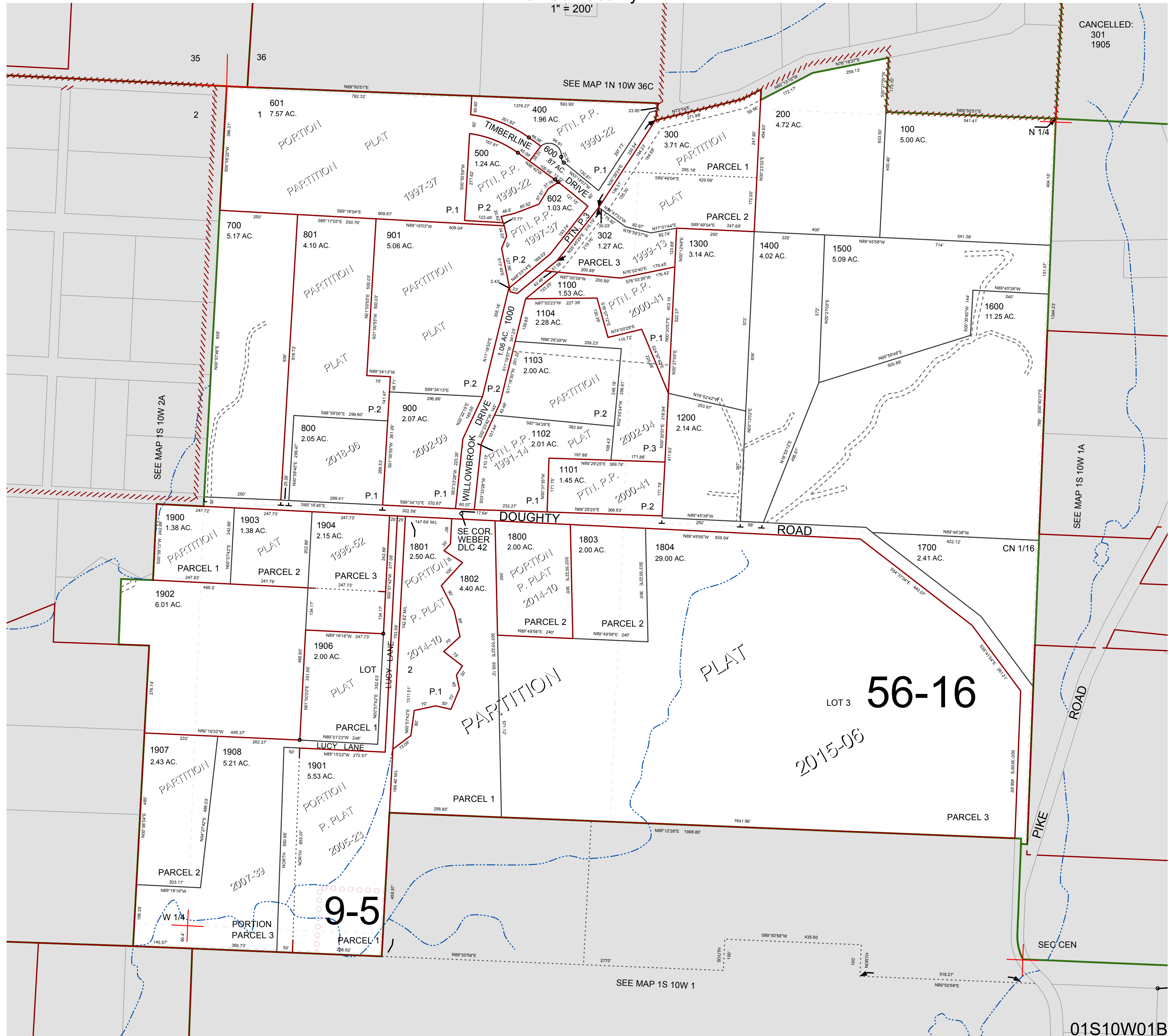
FOR ASSESSMENT AND TAXATION ONLY, NOT SUITABLE FOR LEGAL, ENGINEERING, OR SURVEY PURPOSES

N.W. 1/4 SEC. 1 T.1S. R.10W. W.M.
Tillamook County

1" = 200'

01S10W01B

CANCELLED:
301
1905



01S10W01B

REVISED 05/22/18, WS