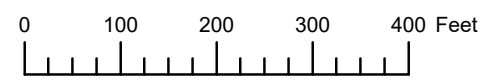


THIS MAP WAS PREPARED FOR ASSESSMENT PURPOSE ONLY

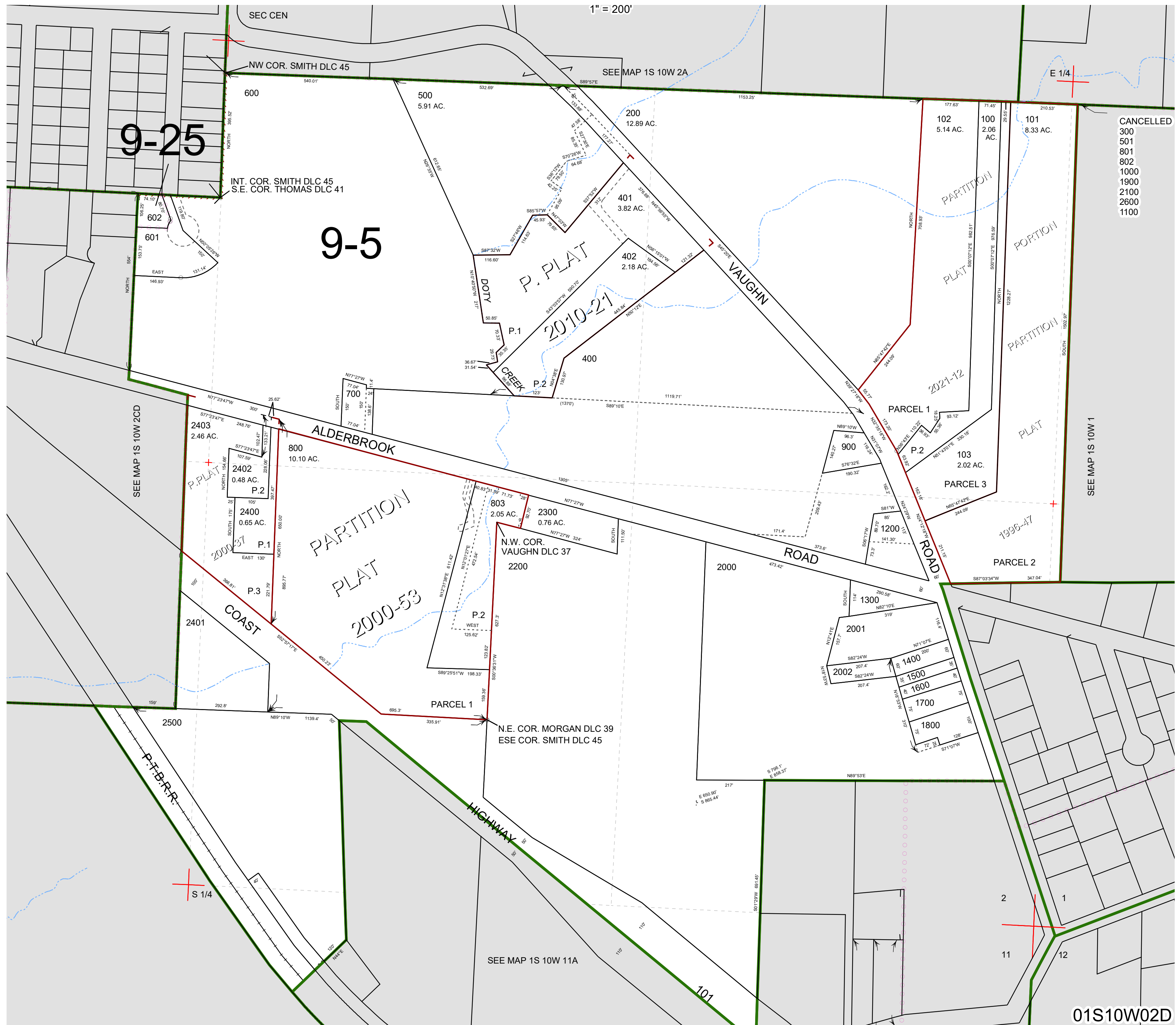


S.E. 1/4 SEC. 2 T. 1S. R. 10W. W.M.

TILLAMOOK COUNTY

01S10W02D

1" = 200'



CANCELLED
300
501
801
802
1000
1900
2100
2600
1100

SEE MAP 1S 10W 1

SEE MAP 1S 10W 11A

01S10W02D

Revised 8/12/22, WS