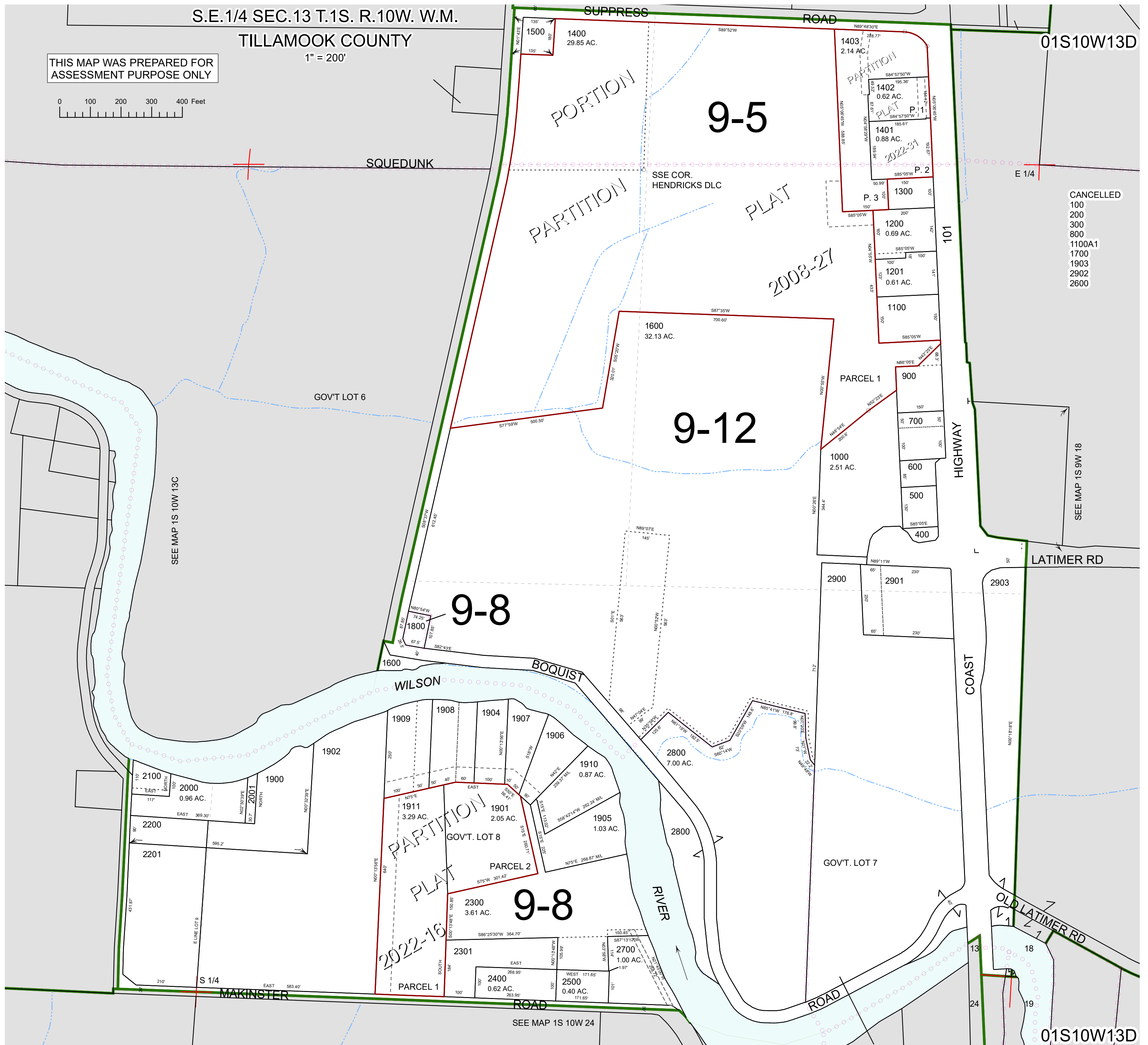
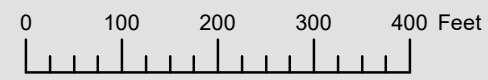


S.E.1/4 SEC.13 T.1S. R.10W. W.M.

TILLAMOOK COUNTY

1" = 200'

THIS MAP WAS PREPARED FOR ASSESSMENT PURPOSE ONLY



01S10W13D

01S10W13D

Revised 7/31/23, WS

- CANCELLED
- 100
- 200
- 300
- 800
- 1100A1
- 1700
- 1903
- 2902
- 2600

SEE MAP 1S 9W 18

SEE MAP 1S 10W 13C

SEE MAP 1S 10W 24