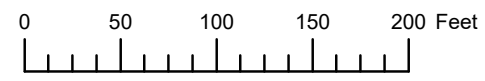


THIS MAP WAS PREPARED FOR ASSESSMENT PURPOSE ONLY



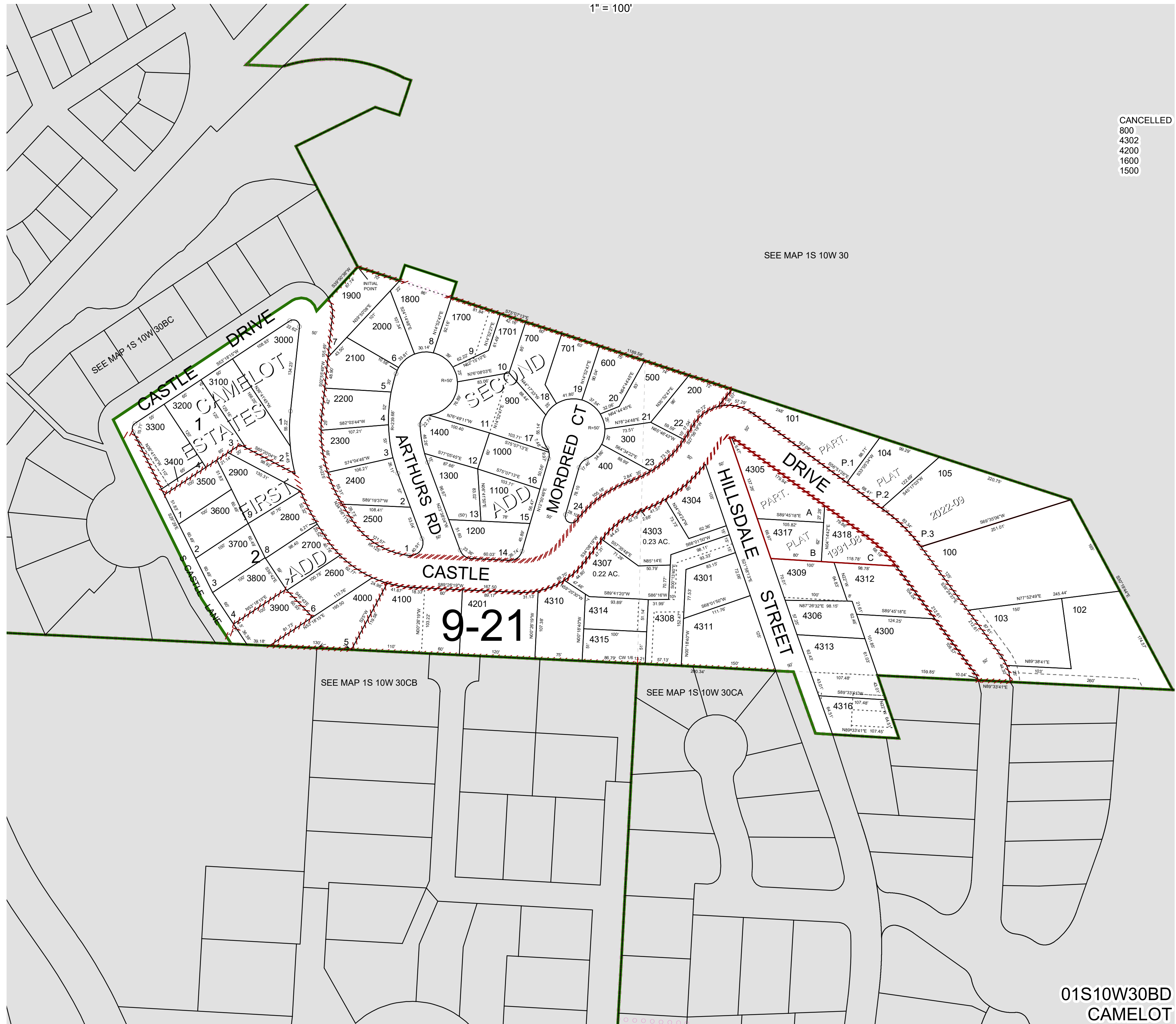
S.E. 1/4 N.W. 1/4 SEC. 30 T. 1S. R. 10W. W.M.

TILLAMOOK COUNTY

1" = 100'

01S10W30BD  
CAMELOT

CANCELLED  
800  
4302  
4200  
1600  
1500



SEE MAP 1S 10W 30

SEE MAP 1S 10W 30BC

SEE MAP 1S 10W 30BC

SEE MAP 1S 10W 30CB

SEE MAP 1S 10W 30CA

9-21

01S10W30BD  
CAMELOT

Revised 8/12/22, WS