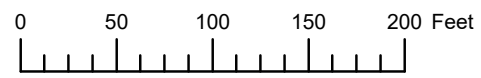


THIS MAP WAS PREPARED FOR ASSESSMENT PURPOSE ONLY

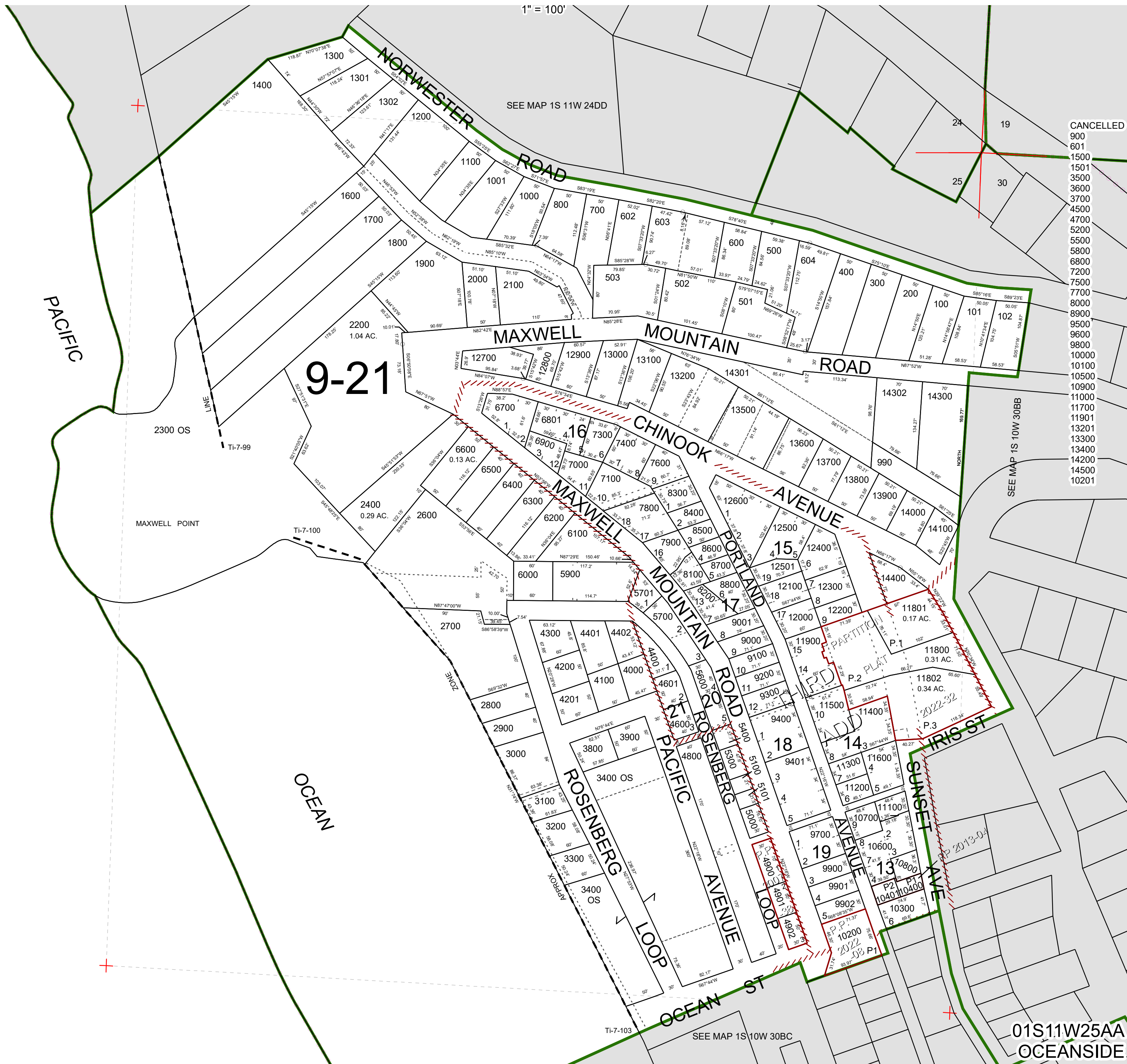


N.E.1/4 N.E.1/4 SEC.25 T.1S. R.11W. W.M.

TILLAMOOK COUNTY

01S11W25AA
OCEANSIDE

1" = 100'



- CANCELLED
- 900
- 601
- 1500
- 1501
- 3500
- 3600
- 3700
- 4500
- 4700
- 5200
- 5500
- 5800
- 6800
- 7200
- 7500
- 7700
- 8000
- 8900
- 9500
- 9600
- 9800
- 10000
- 10100
- 10500
- 10900
- 11000
- 11700
- 11901
- 13201
- 13300
- 13400
- 14200
- 14500
- 10201

01S11W25AA
OCEANSIDE

Revised 2/14/23, WS