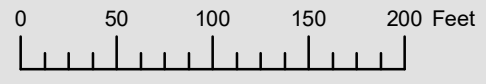


THIS MAP WAS PREPARED FOR ASSESSMENT PURPOSE ONLY



S.W.1/4 N.W.1/4 SEC.29 T.1S. R.9W. W.M.

TILLAMOOK COUNTY

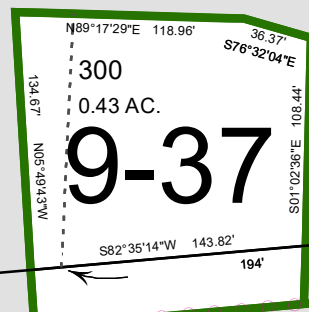
SEE MAP 01S 09W 29

01S09W29BC



SEE MAP 01S 09W 29

SEE MAP 01S 09W 29AC



SEE MAP 01S 09W 29CB

SEE MAP 01S 09W 29CA

01S09W29BC

Revised 08/07/20, WS