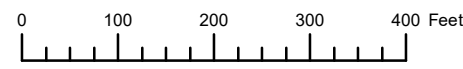


THIS MAP WAS PREPARED FOR ASSESSMENT PURPOSE ONLY

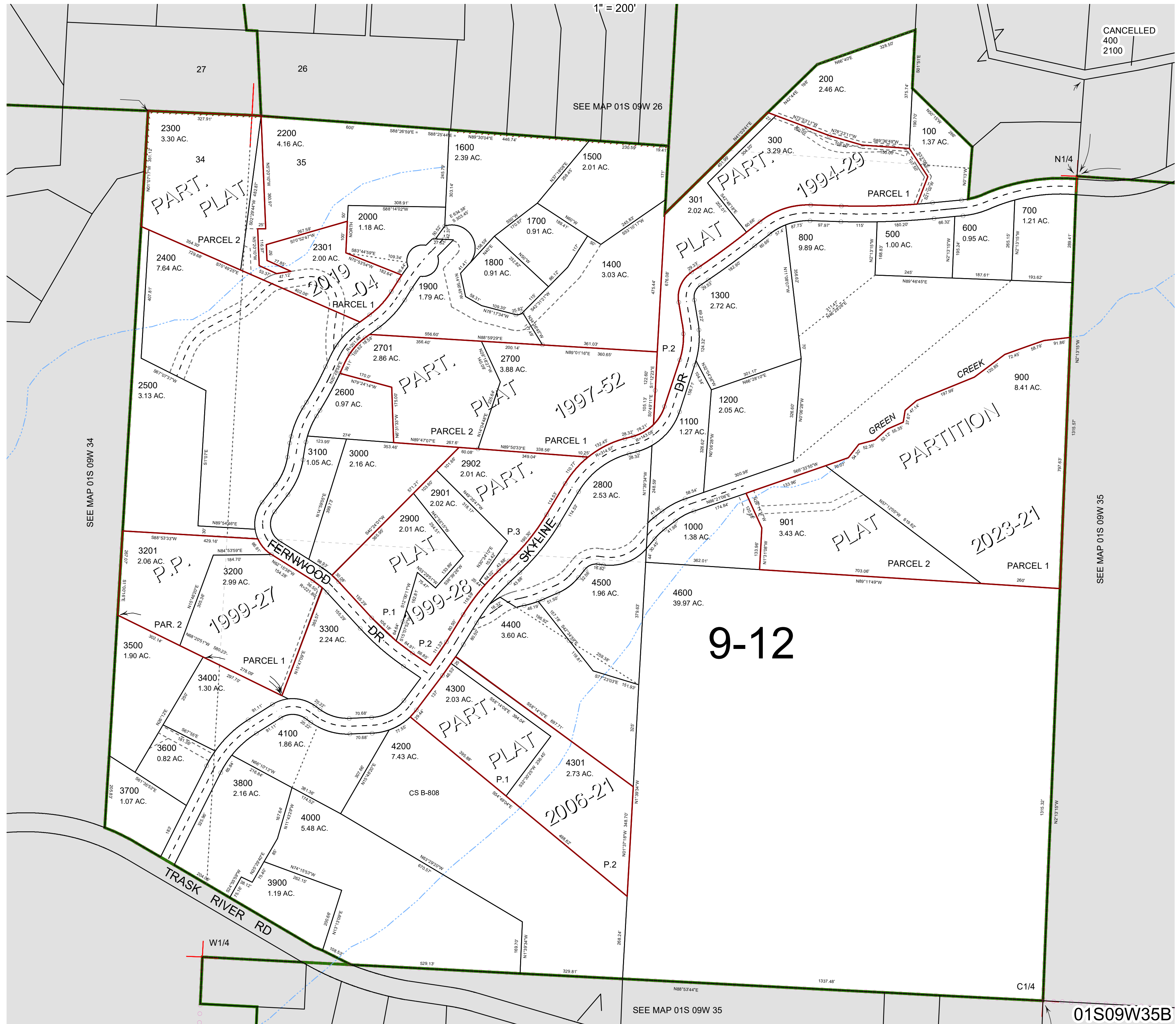


N.W.1/4 SEC.35 T.1S. R.9W. W.M.

TILLAMOOK COUNTY

01S09W35B

1" = 200'



CANCELLED
400
2100

9-12

SEE MAP 01S 09W 35

SEE MAP 01S 09W 34

SEE MAP 01S 09W 35

01S09W35B

Revised 12/01/23, WS