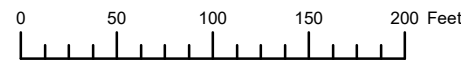


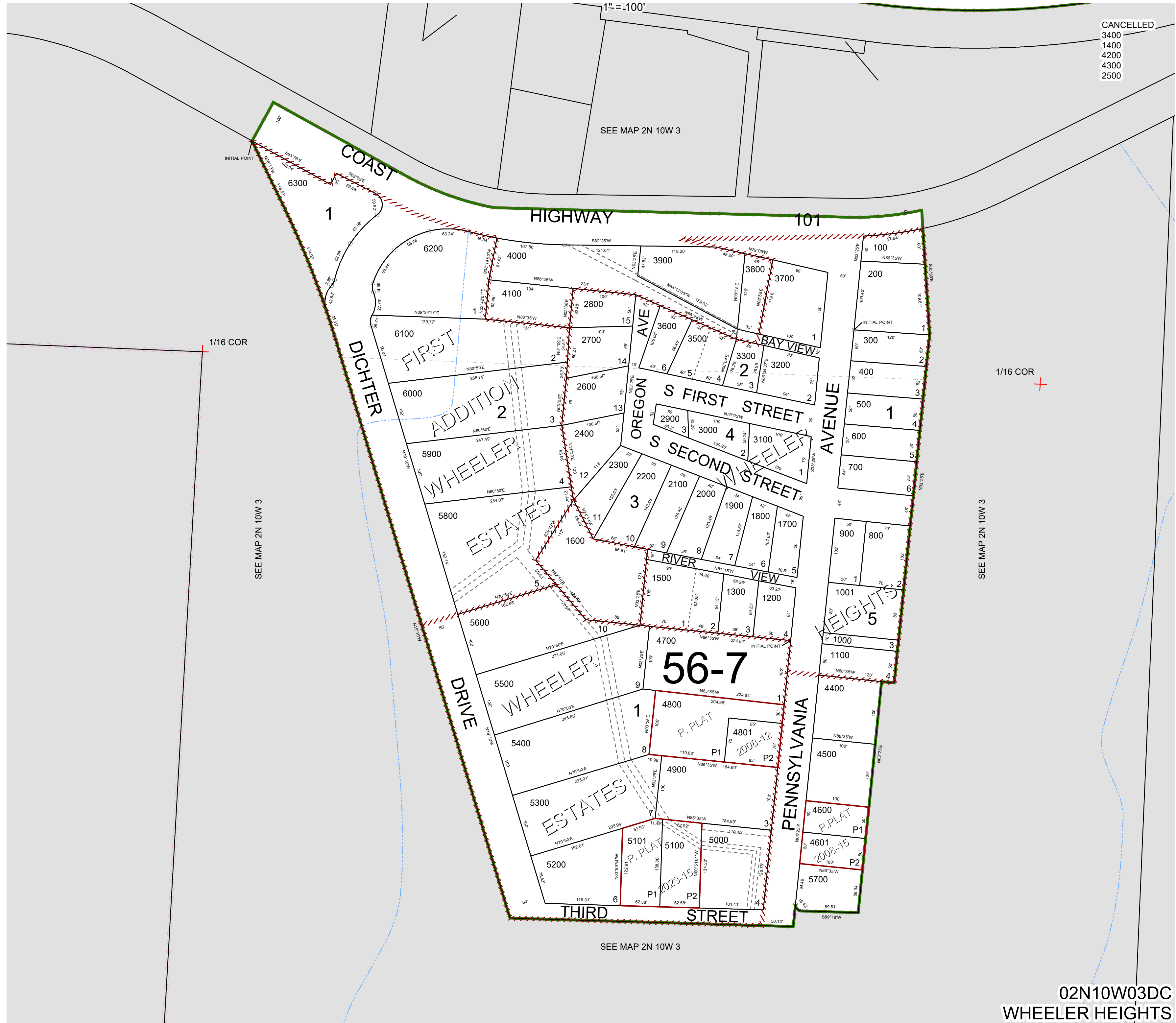
THIS MAP WAS PREPARED FOR ASSESSMENT PURPOSE ONLY



S.W.1/4 S.E.1/4 SEC.3 T.2N. R.10W. W.M.

TILLAMOOK COUNTY

02N10W03DC
WHEELER HEIGHTS



CANCELLED
3400
1400
4200
4300
2500

1/16 COR +

SEE MAP 2N 10W 3

SEE MAP 2N 10W 3

SEE MAP 2N 10W 3

02N10W03DC
WHEELER HEIGHTS