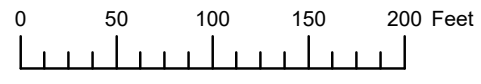


THIS MAP WAS PREPARED FOR ASSESSMENT PURPOSE ONLY

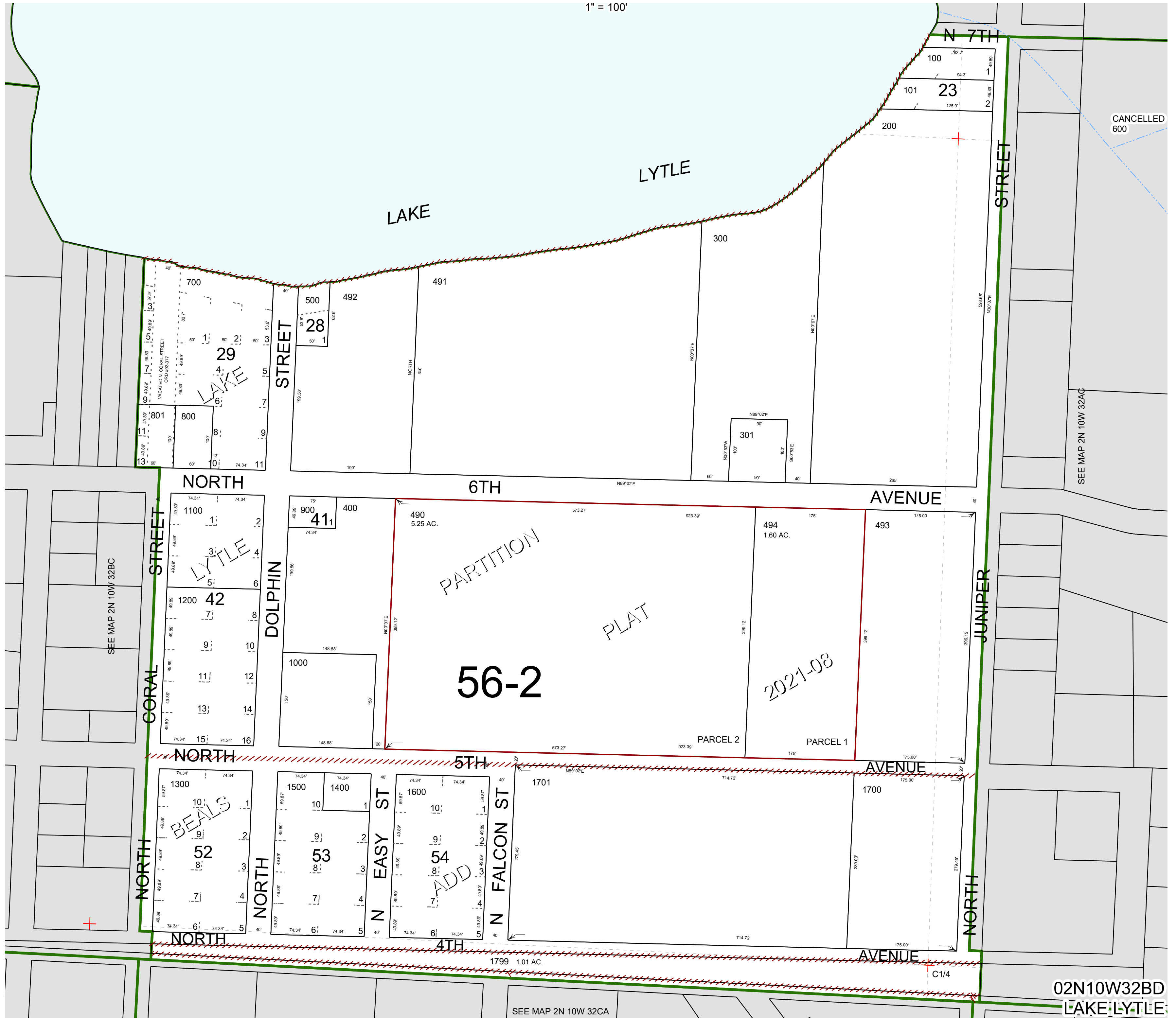


S.E. 1/4 N.W. 1/4 SEC. 32 T.2N. R.10W. W.M.

TILLAMOOK COUNTY

1" = 100'

02N10W32BD
LAKE LYTLE



CANCELLED
600

SEE MAP 2N 10W 32AC

SEE MAP 2N 10W 32BC

2021-08

02N10W32BD
LAKE LYTLE

Revised 5/11/22, WS