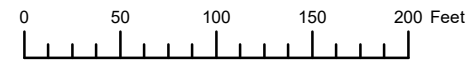


THIS MAP WAS PREPARED FOR ASSESSMENT PURPOSE ONLY



N.E.1/4 S.W.1/4 SEC.32 T.2N. R.10W. W.M.

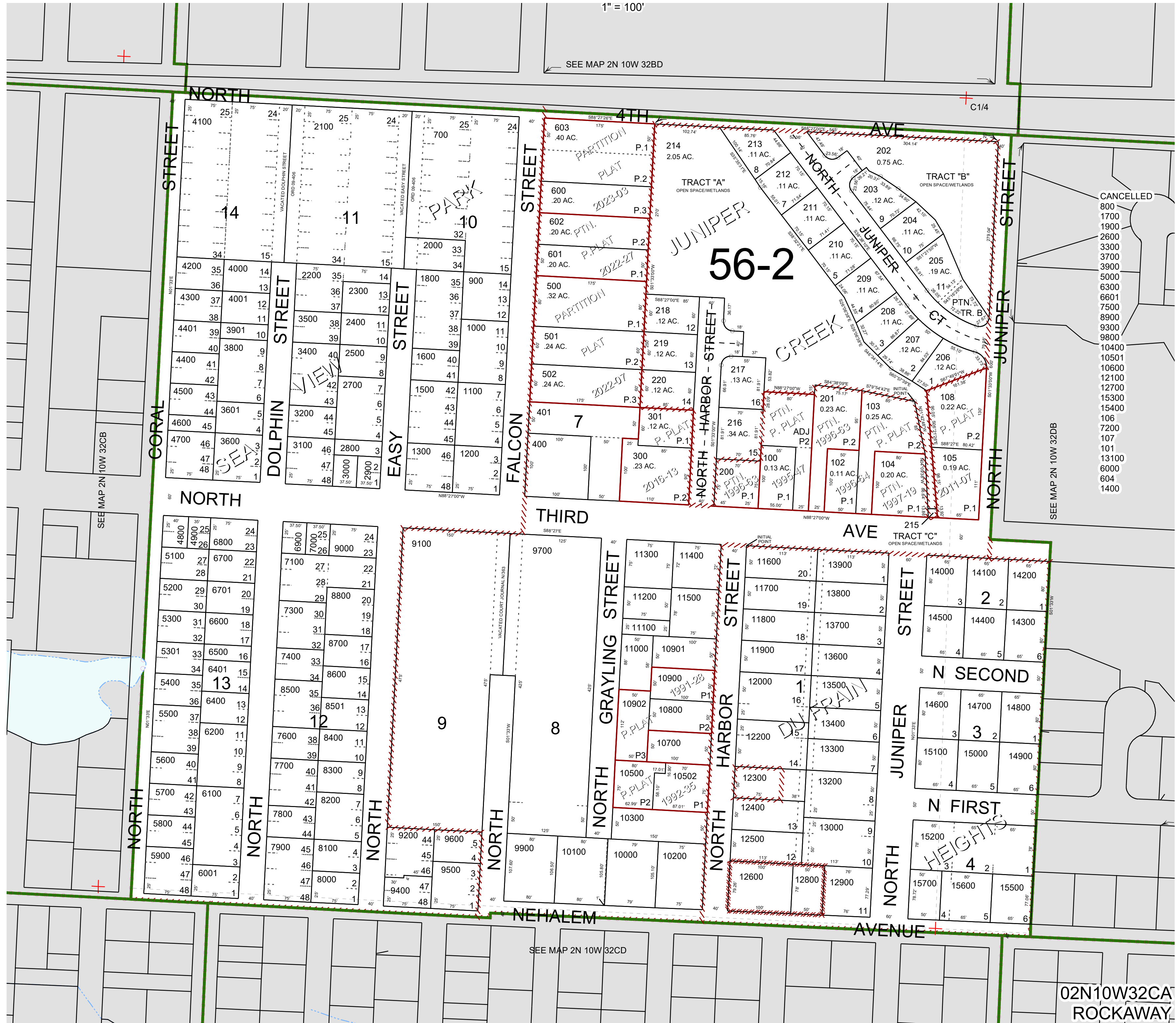
TILLAMOOK COUNTY

02N10W32CA

ROCKAWAY

1" = 100'

SEE MAP 2N 10W 32BD



CANCELLED

- 800
- 1700
- 1900
- 2600
- 3300
- 3700
- 3900
- 5000
- 6300
- 6601
- 7500
- 8900
- 9300
- 9800
- 10400
- 10501
- 10600
- 12100
- 12700
- 15300
- 15400
- 106
- 7200
- 107
- 101
- 13100
- 6000
- 604
- 1400

SEE MAP 2N 10W 32DB

SEE MAP 2N 10W 32CB

SEE MAP 2N 10W 32CD

02N10W32CA

ROCKAWAY

Revised 4/01/24, WS