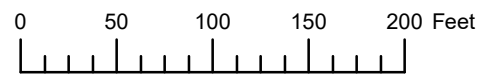


THIS MAP WAS PREPARED FOR ASSESSMENT PURPOSE ONLY

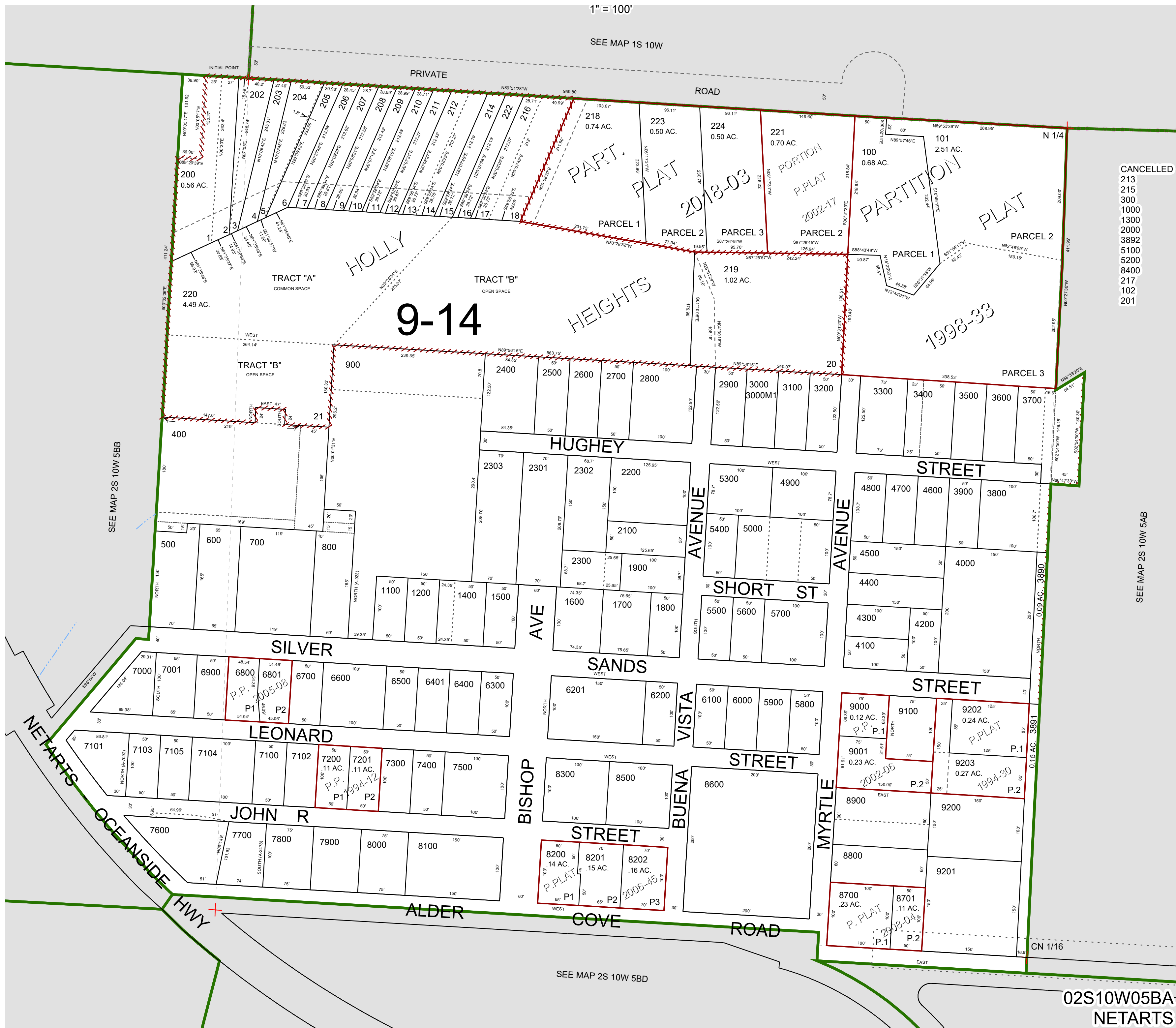


N.E. 1/4 N.W. 1/4 SEC. 5 T.2S. R.10W. W.M.

TILLAMOOK COUNTY

1" = 100'

02S10W05BA  
NETARTS



CANCELLED  
213  
215  
300  
1000  
1300  
2000  
3892  
5100  
5200  
8400  
217  
102  
201

SEE MAP 2S 10W 5AB

02S10W05BA  
NETARTS

Revised 05/18/21, WS