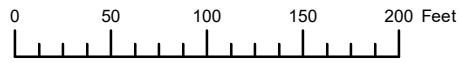


THIS MAP WAS PREPARED FOR ASSESSMENT PURPOSE ONLY

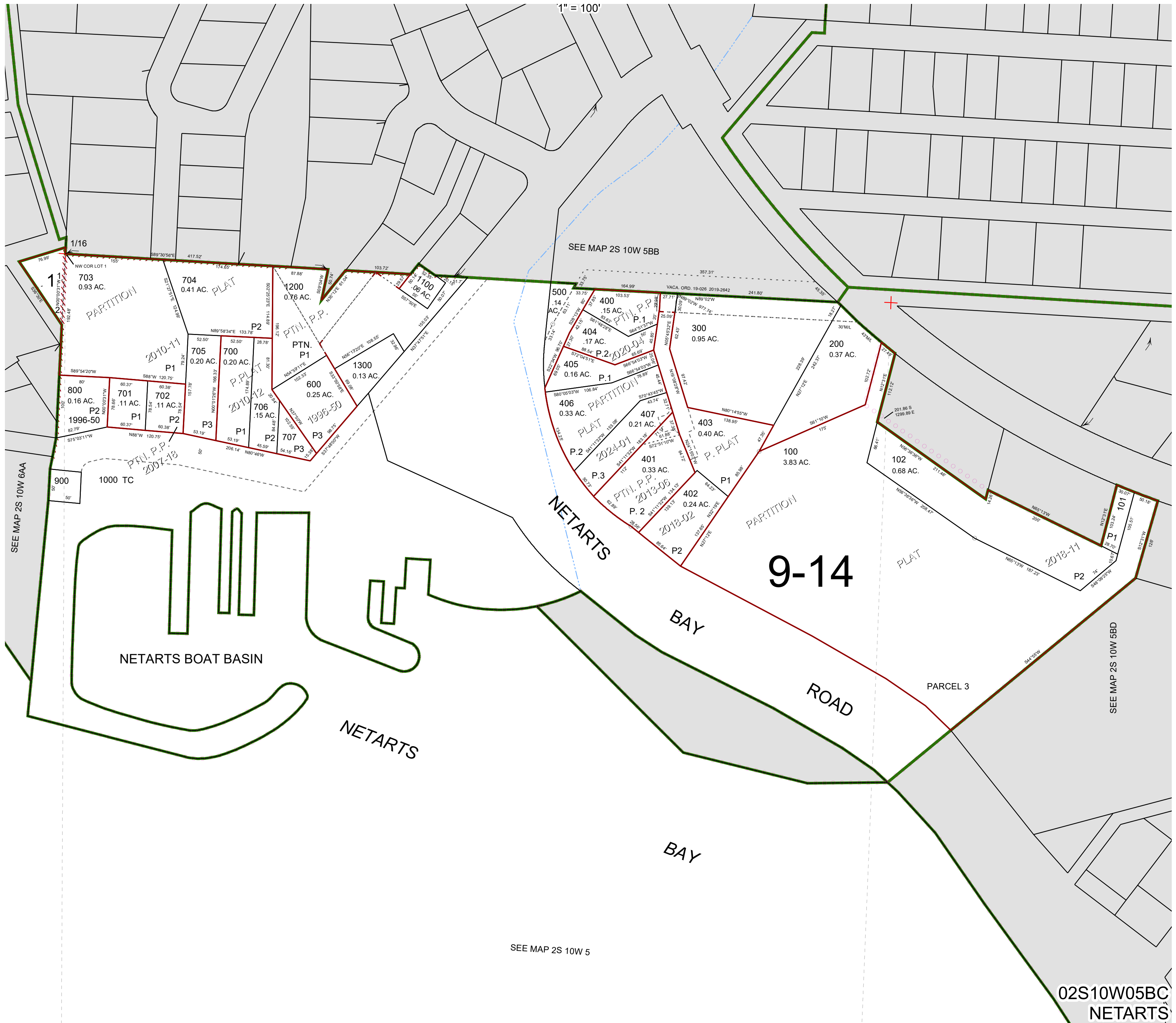


S.W.1/4 N.W.1/4 SEC.5 T.2S. R.10W. W.M.

TILLAMOOK COUNTY

02S10W05BC

NETARTS



1" = 100'

SEE MAP 2S 10W 5BB

SEE MAP 2S 10W 6AA

SEE MAP 2S 10W 5BD

SEE MAP 2S 10W 5

02S10W05BC

NETARTS

Revised 2/29/24, WS