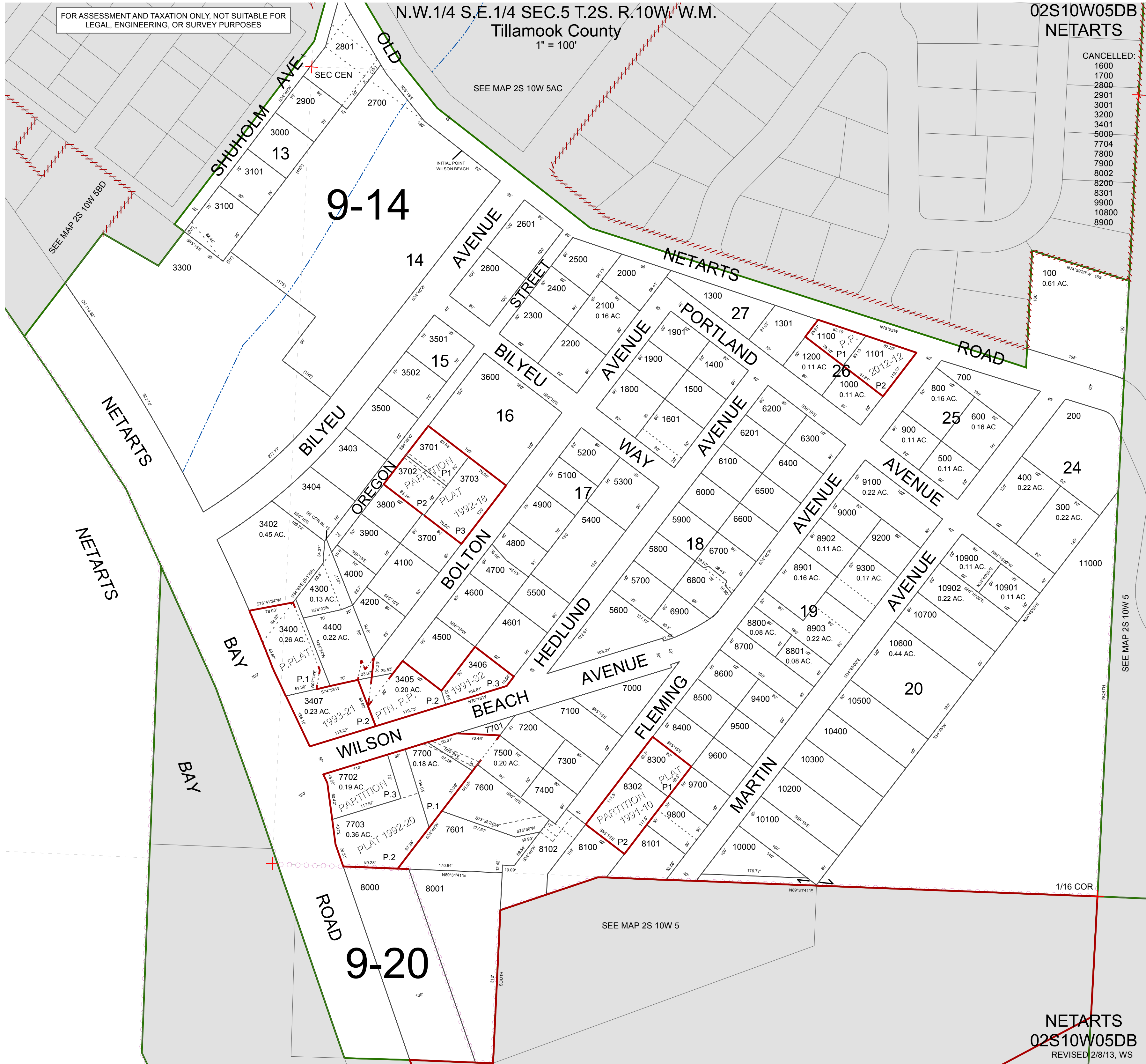


FOR ASSESSMENT AND TAXATION ONLY, NOT SUITABLE FOR LEGAL, ENGINEERING, OR SURVEY PURPOSES

N.W. 1/4 S.E. 1/4 SEC. 5 T.2S. R.10W. W.M.  
Tillamook County  
1" = 100'

02S10W05DB  
NETARTS

- CANCELLED:
- 1600
  - 1700
  - 2800
  - 2901
  - 3001
  - 3200
  - 3401
  - 5000
  - 7704
  - 7800
  - 7900
  - 8002
  - 8200
  - 8301
  - 9900
  - 10800
  - 8900



9-14

9-20

SEE MAP 2S 10W 5

NETARTS  
02S10W05DB  
REVISED 2/8/13, WS