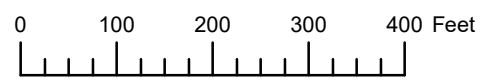


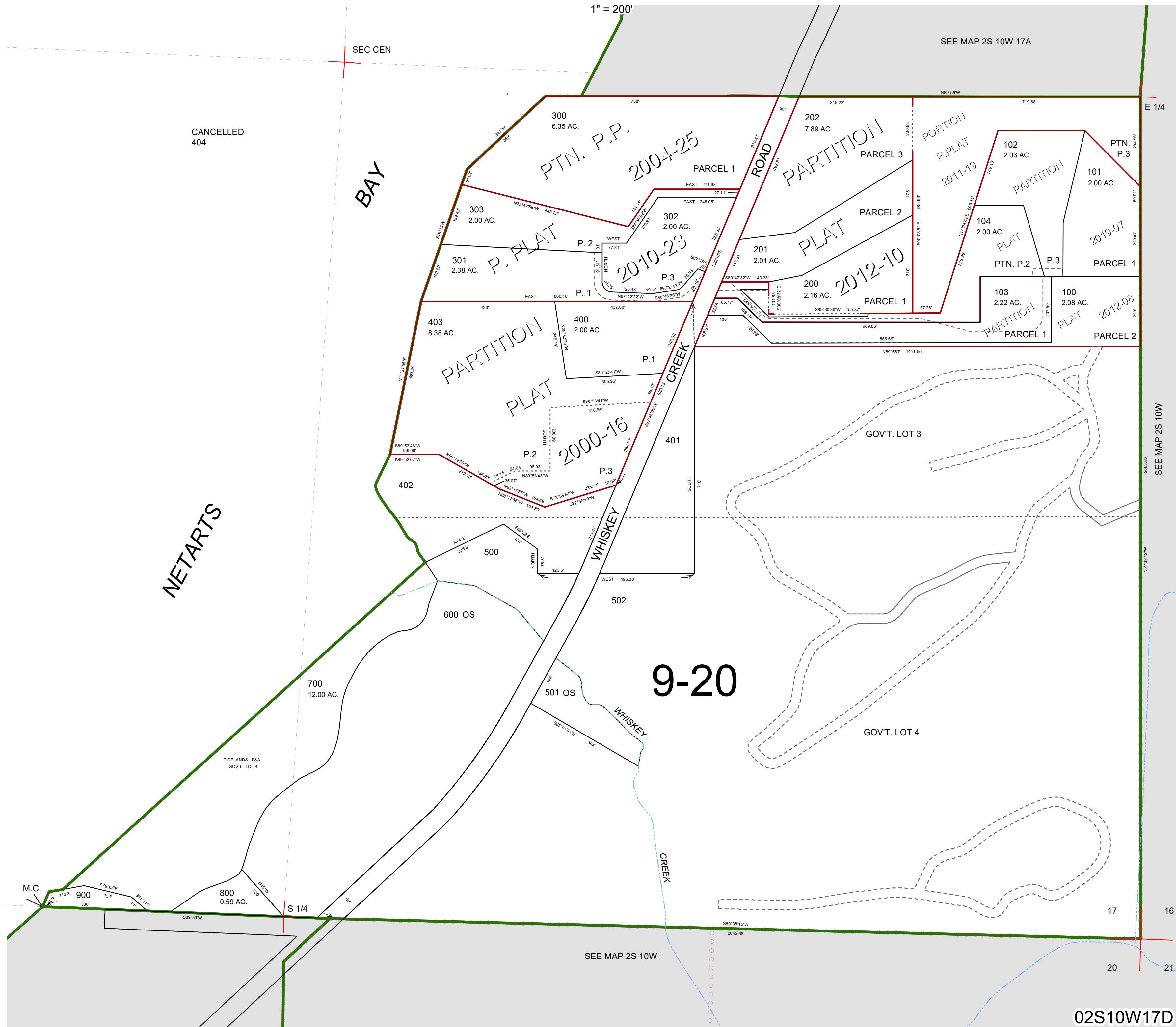
THIS MAP WAS PREPARED FOR ASSESSMENT PURPOSE ONLY



S.E. 1/4 SEC.17 T.2S. R.10W. W.M.

TILLAMOOK COUNTY

02S10W17D



CANCELLED 404

SEE MAP 2S 10W 17A

E 1/4

BAY

NETARTS

9-20

SEE MAP 2S 10W

17

16

20

21

02S10W17D

Revised 05/18/21, WS