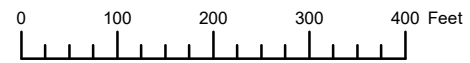


THIS MAP WAS PREPARED FOR ASSESSMENT PURPOSE ONLY

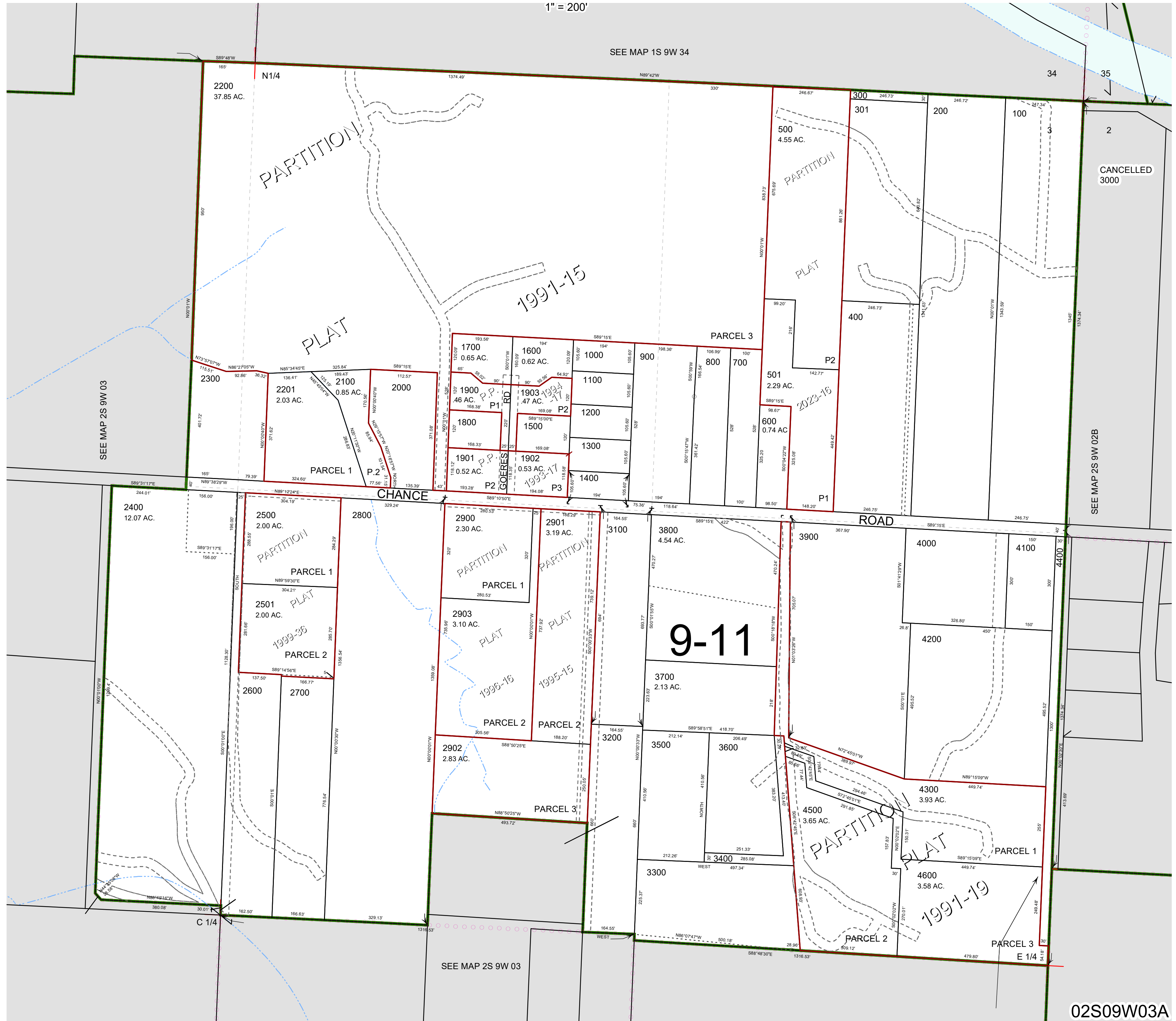


N.E. 1/4 SEC.3 T.2S. R.9W. W.M.

TILLAMOOK COUNTY

1" = 200'

02S09W03A



SEE MAP 2S 9W 03

SEE MAP 1S 9W 34

SEE MAP 2S 9W 02B

SEE MAP 2S 9W 03

02S09W03A

Revised 12/01/23, WS