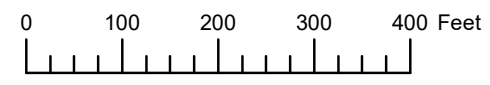


THIS MAP WAS PREPARED FOR ASSESSMENT PURPOSE ONLY

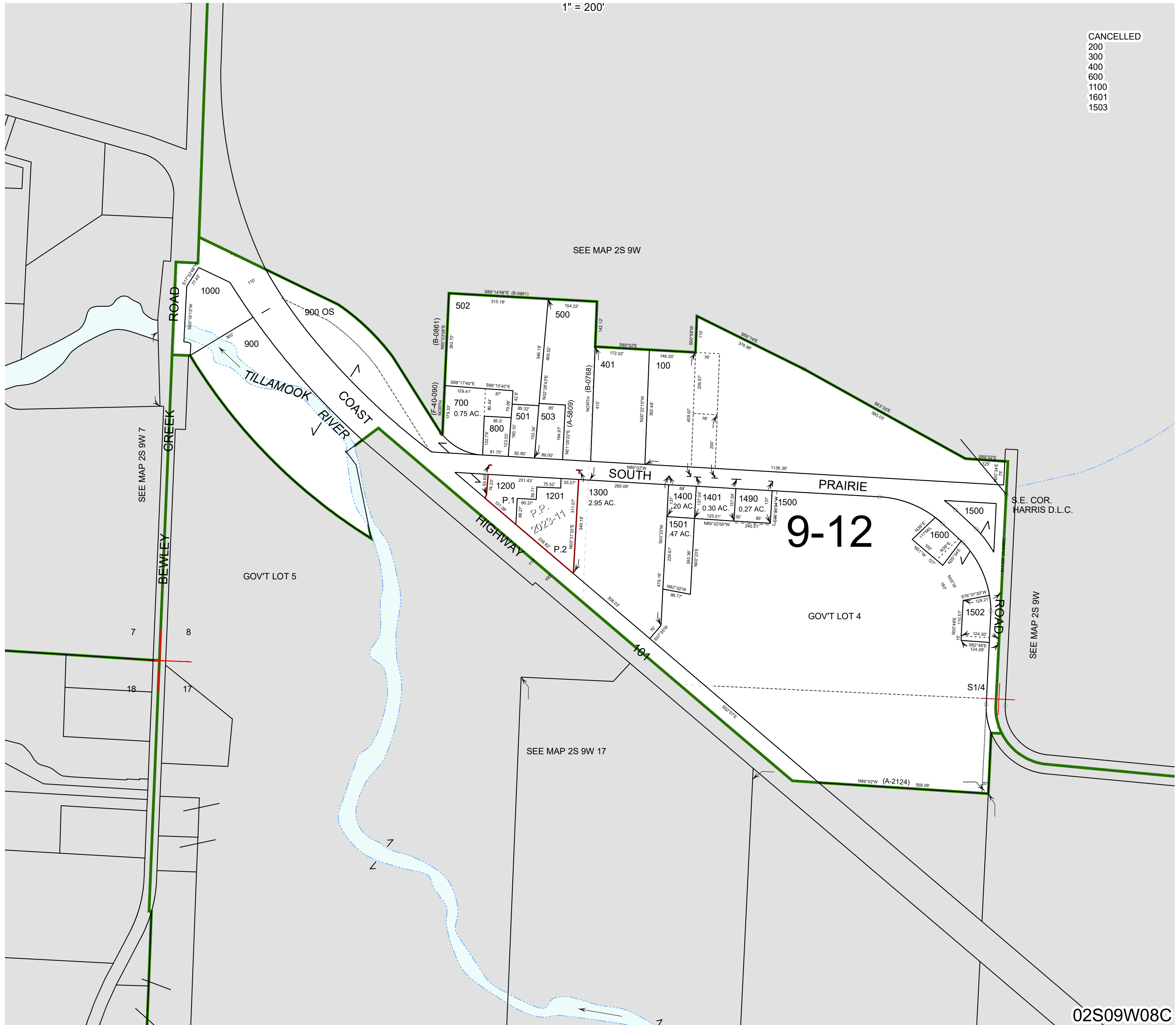


S.W. 1/4 SEC. 8 T. 2S. R. 9W. W.M.  
TILLAMOOK COUNTY

1" = 200'

02S09W08C

- CANCELLED
- 200
- 300
- 400
- 600
- 1100
- 1601
- 1503



02S09W08C

Revised 7/31/23, WS