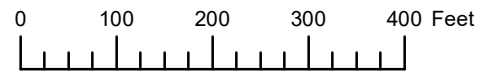


THIS MAP WAS PREPARED FOR ASSESSMENT PURPOSE ONLY



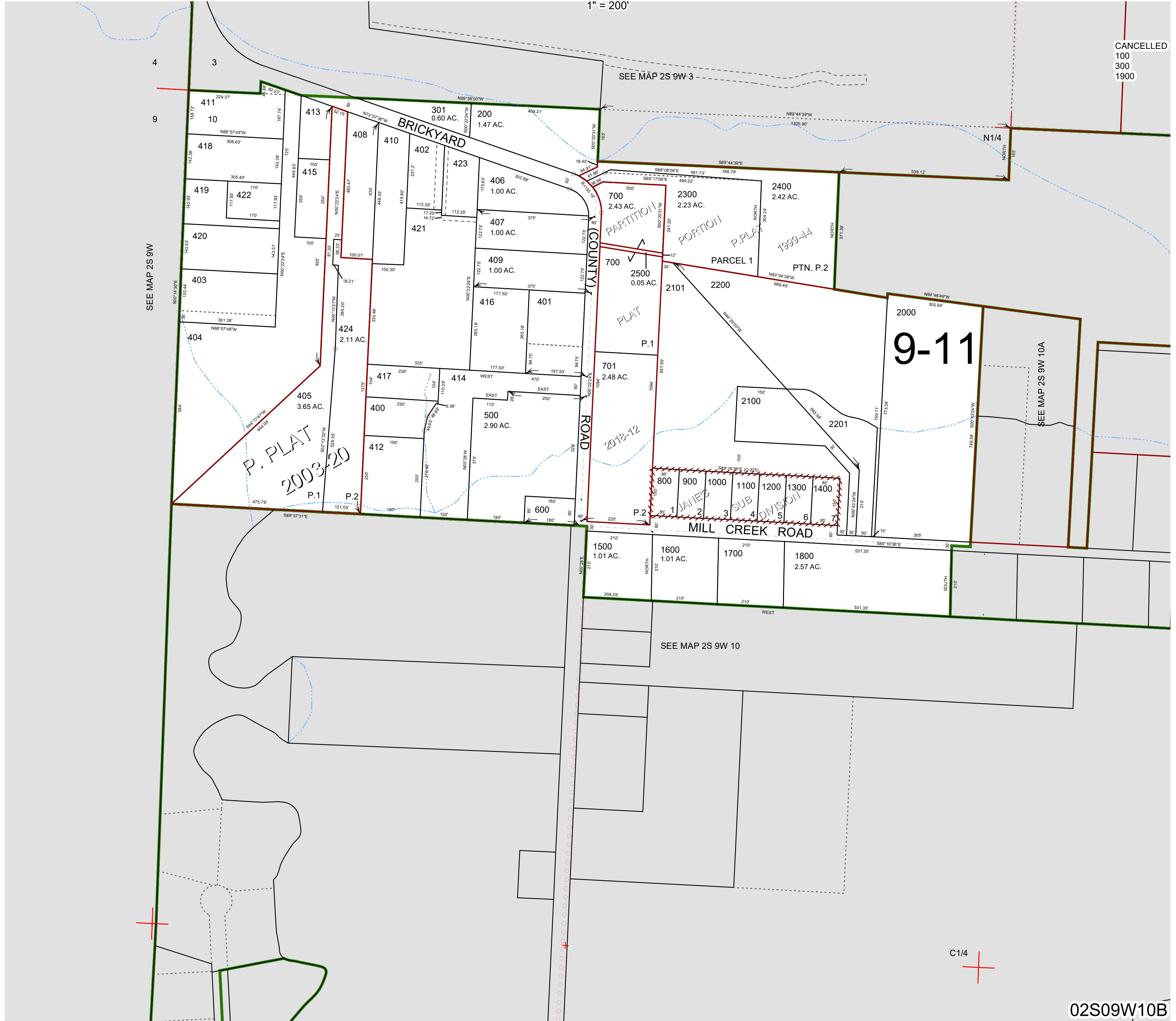
N.W. 1/4 SEC. 10 T.2S. R.9W. W.M.

TILLAMOOK COUNTY

1" = 200'

02S09W10B

CANCELLED
100
300
1900



02S09W10B

Revised 05/14/20, WS