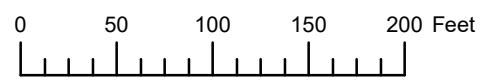


THIS MAP WAS PREPARED FOR ASSESSMENT PURPOSE ONLY

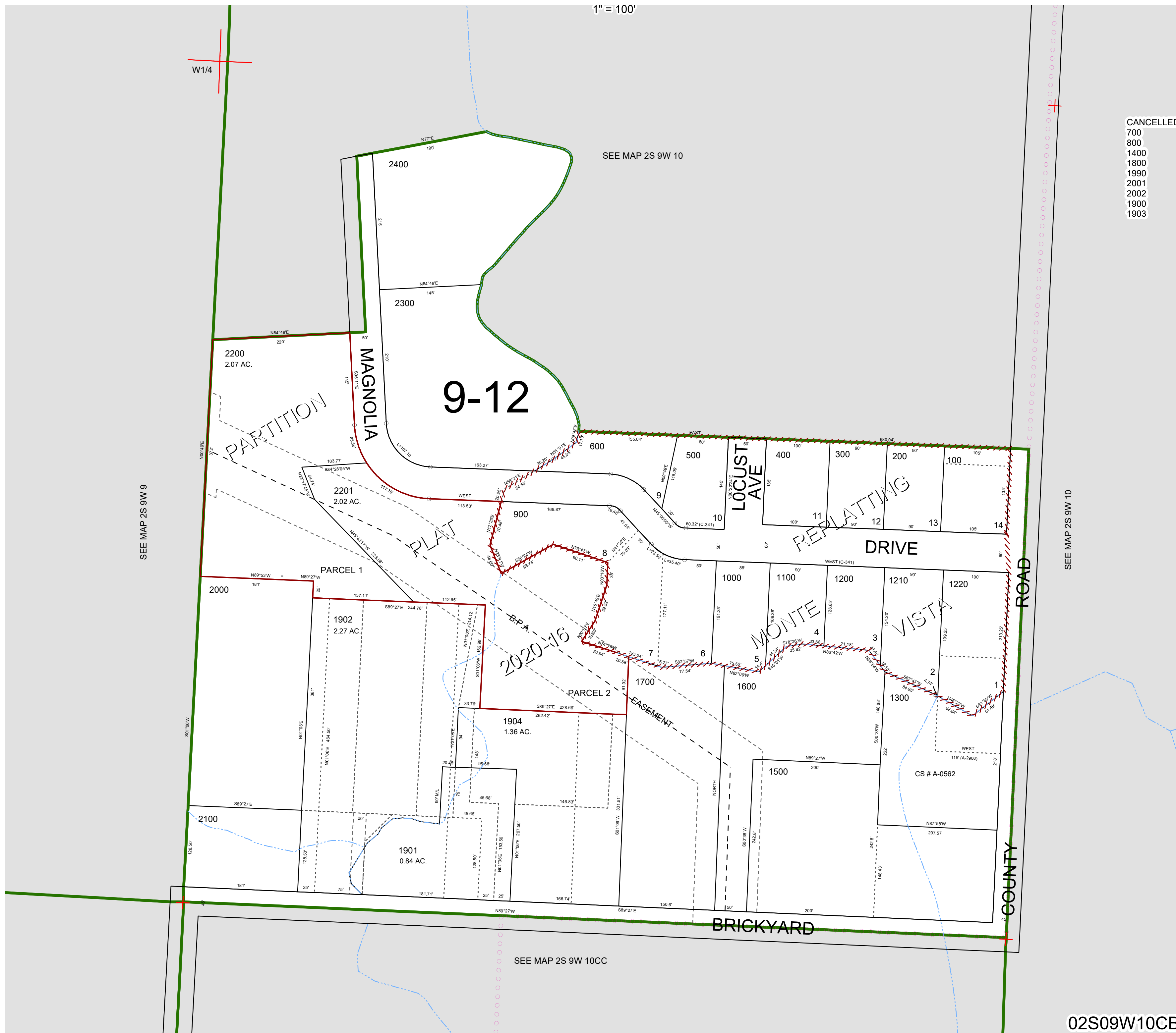


N.W.1/4 S.W.1/4 SEC.10 T.2S. R.9W. W.M.

TILLAMOOK COUNTY

1" = 100'

02S09W10CB



- CANCELLED
- 700
- 800
- 1400
- 1800
- 1990
- 2001
- 2002
- 1900
- 1903

02S09W10CB

Revised 03/08/21, WS