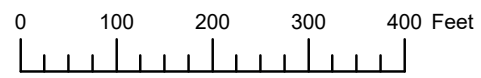


THIS MAP WAS PREPARED FOR ASSESSMENT PURPOSE ONLY



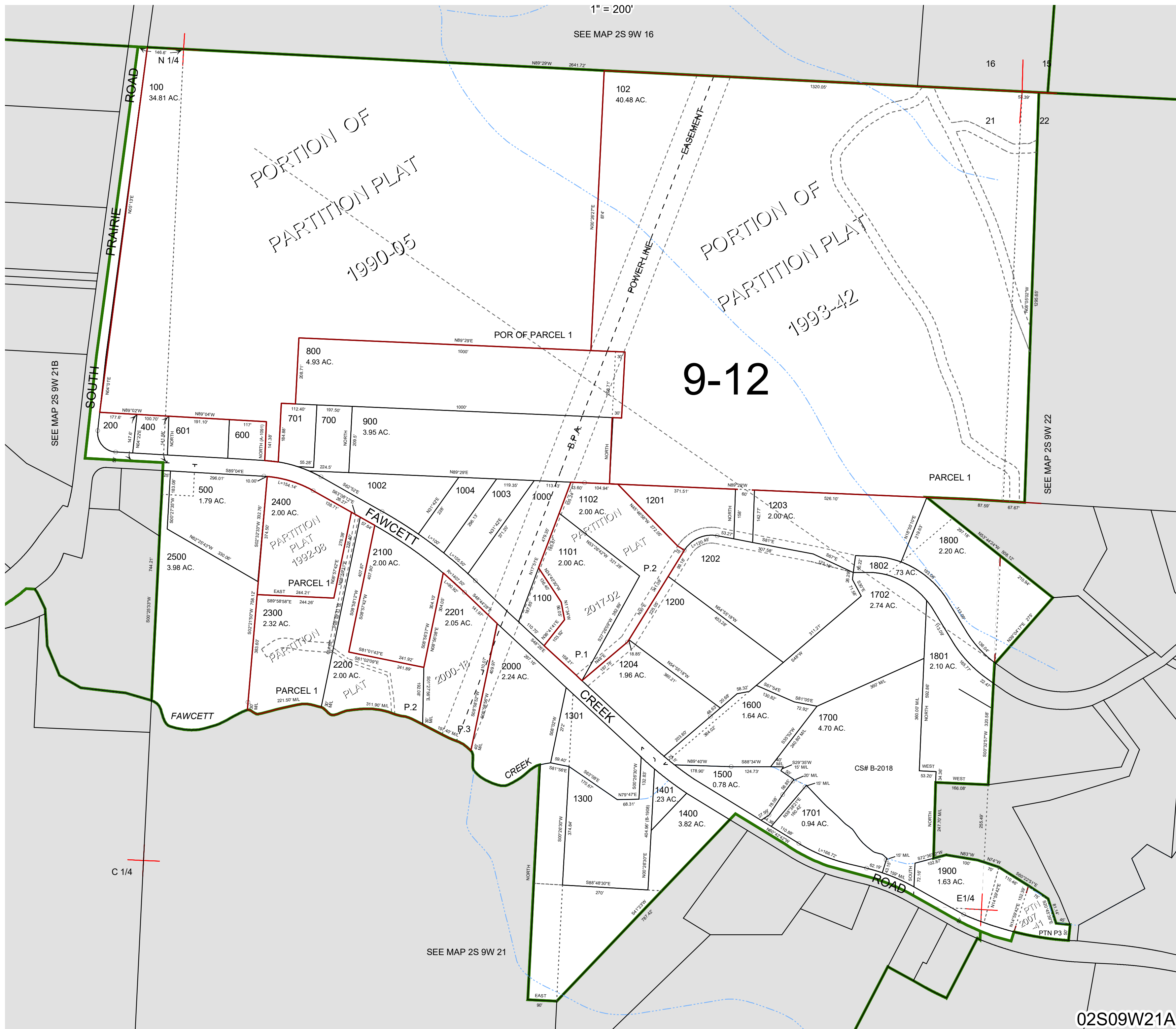
N.E. 1/4 SEC. 21 T.2S. R.9W. W.M.

TILLAMOOK COUNTY

02S09W21A

1" = 200'

SEE MAP 2S 9W 16



SEE MAP 2S 9W 21B

SEE MAP 2S 9W 22

C 1/4

SEE MAP 2S 9W 21

02S09W21A

Revised 12/15/21, WS