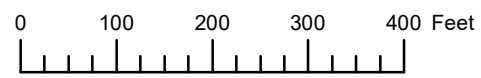


THIS MAP WAS PREPARED FOR ASSESSMENT PURPOSE ONLY

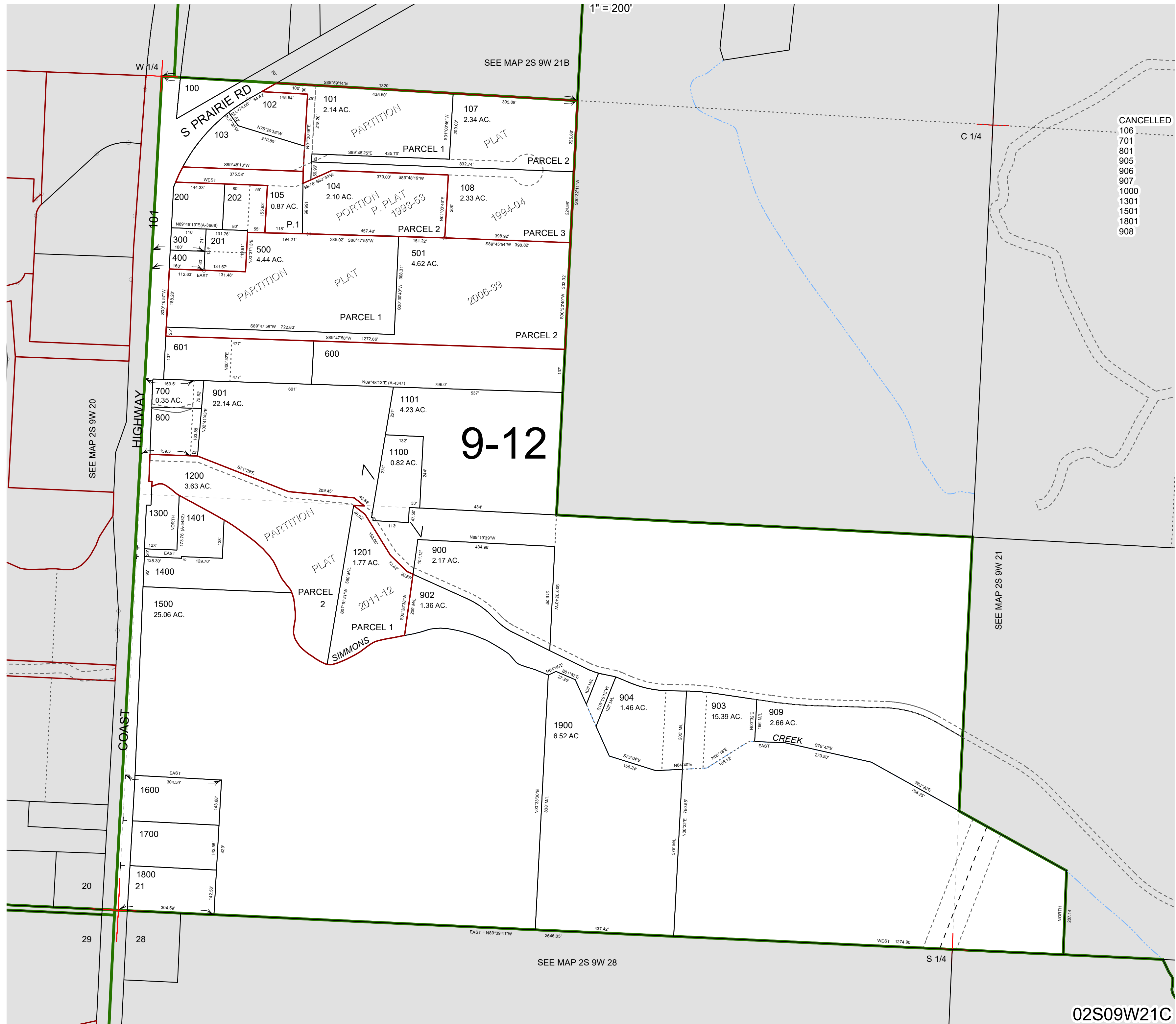


S.W.1/4 SEC.21 T.2S. R.9W. W.M.

TILLAMOOK COUNTY

02S09W21C

1" = 200'



CANCELLED  
106  
701  
801  
906  
907  
1000  
1301  
1501  
1801  
908

9-12

02S09W21C

Revised 7/5/19, WS