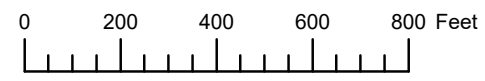


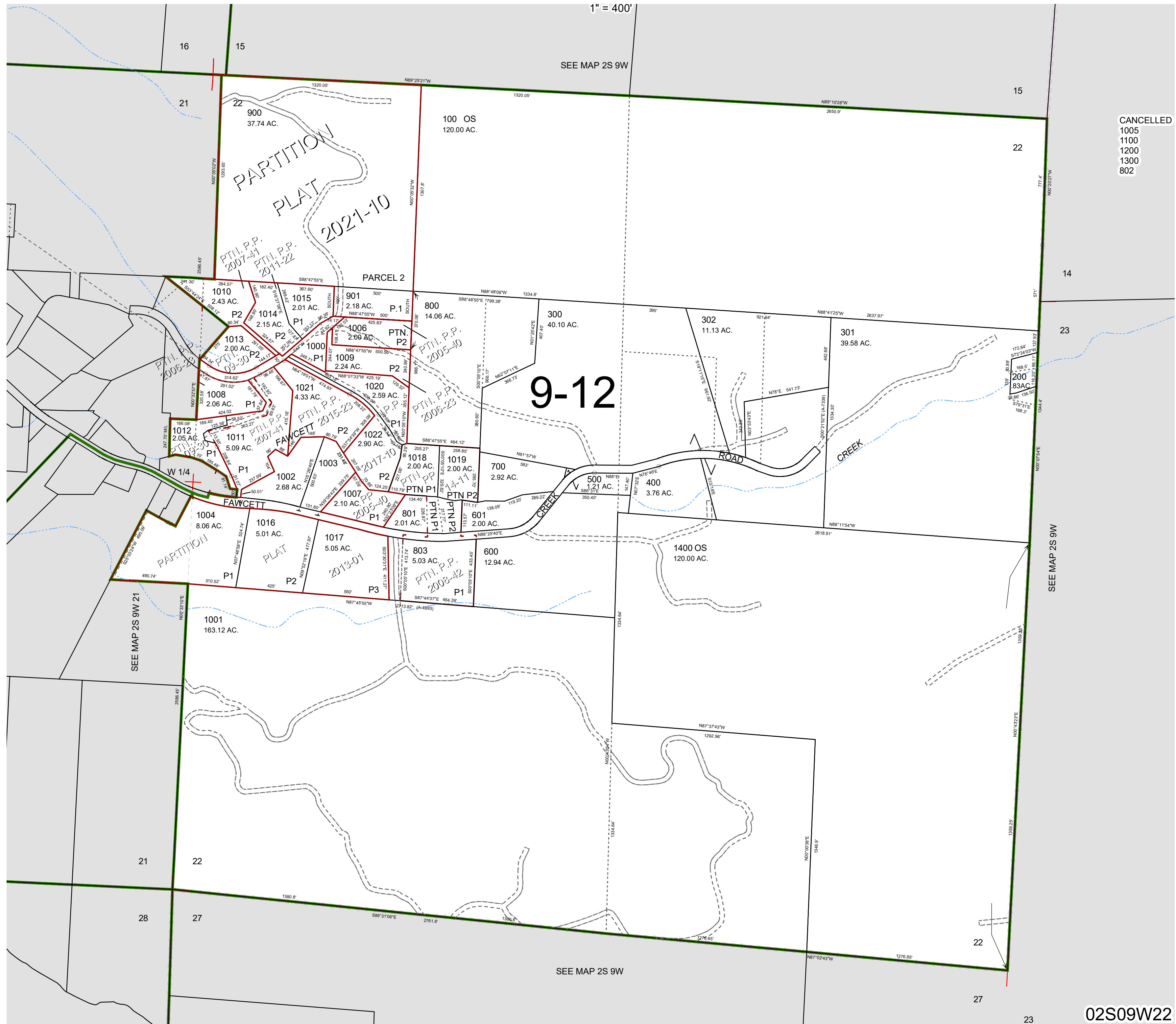
THIS MAP WAS PREPARED FOR ASSESSMENT PURPOSE ONLY



SECTION 22 T.2S. R.9W. W.M.
TILLAMOOK COUNTY

02S09W22

1" = 400'



CANCELLED
1005
1100
1200
1300
802

9-12

02S09W22

Revised 8/12/22, WS