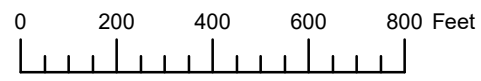


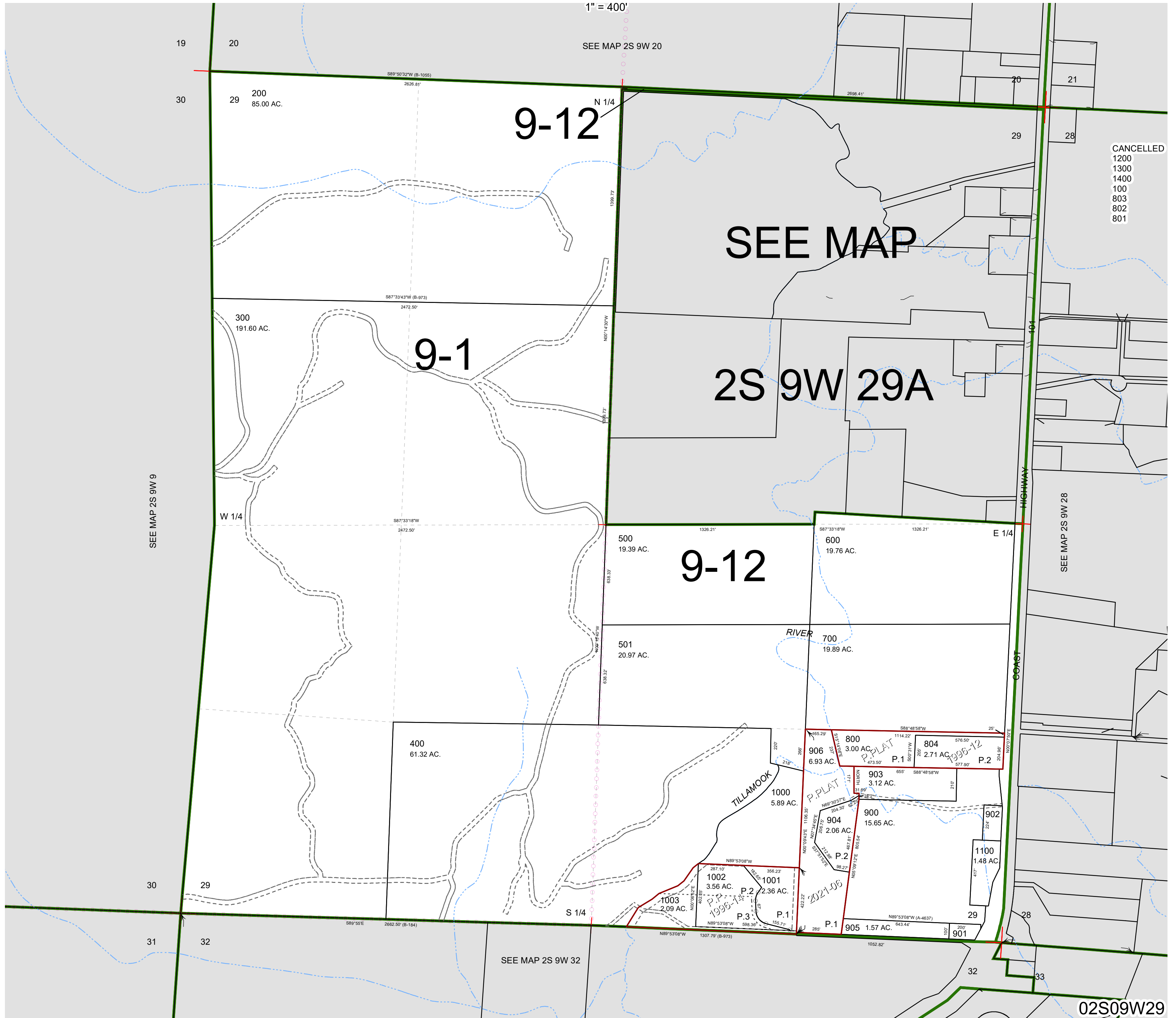
THIS MAP WAS PREPARED FOR ASSESSMENT PURPOSE ONLY



SECTION 29 T.2S. R.9W. W.M.  
TILLAMOOK COUNTY

02S09W29

1" = 400'



CANCELLED  
1200  
1300  
1400  
100  
803  
802  
801

02S09W29

Revised 07/15/21, WS