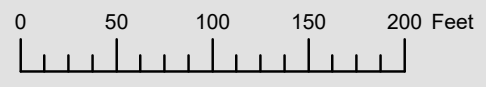


THIS MAP WAS PREPARED FOR ASSESSMENT PURPOSE ONLY



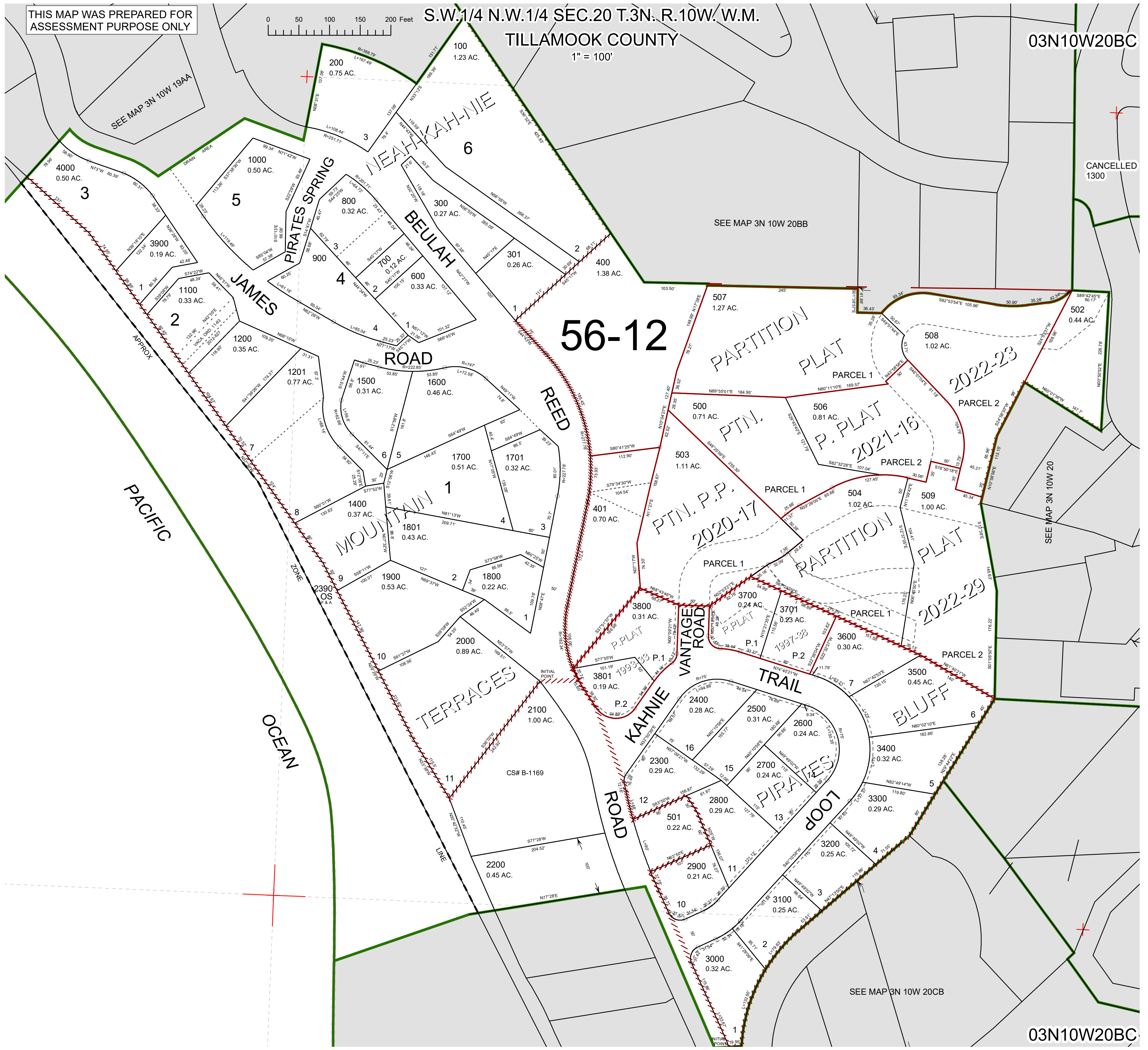
S.W.1/4 N.W.1/4 SEC.20 T.3N. R.10W. W.M.

TILLAMOOK COUNTY

1" = 100'

03N10W20BC

CANCELLED 1300



56-12

PARTITION PLAT

P. PLAT 2021-16

2022-23

PTN. P.P. 2020-17

PARTITION PLAT

2022-29

KAHNIE

PIRATES LOOP

BLUFF

TERRACES

MOUNTAIN

JAMES

BEULAH

NEATH KAHNIE

PIRATES SPRING

PACIFIC OCEAN LINE

03N10W20BC

Revised 2/14/23, WS