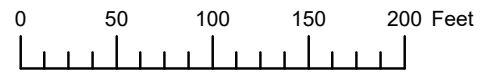


THIS MAP WAS PREPARED FOR ASSESSMENT PURPOSE ONLY



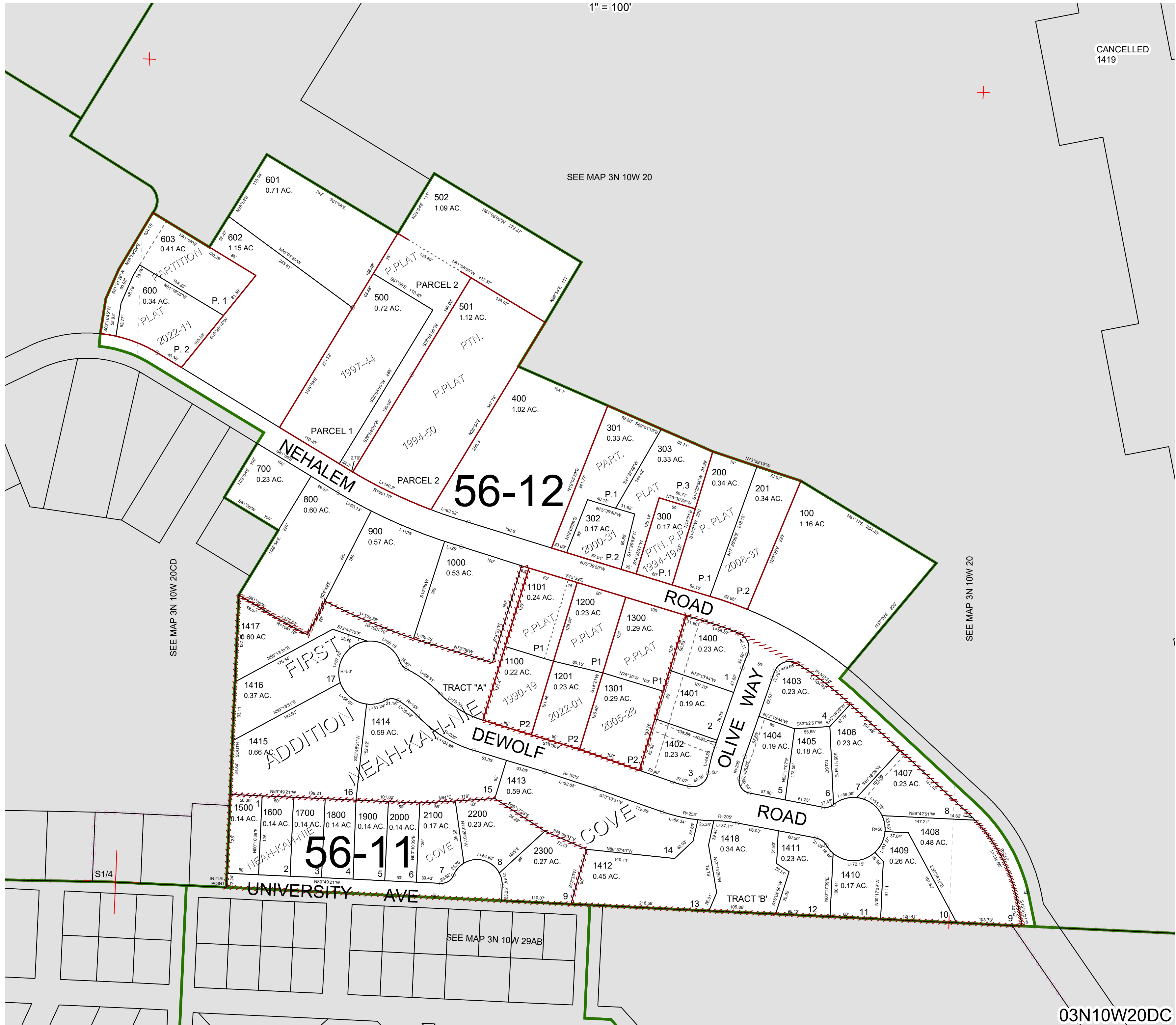
S.W.1/4 S.E.1/4 SEC.20 T.3N. R.10W. W.M.

TILLAMOOK COUNTY

1" = 100'

03N10W20DC

CANCELLED 1419



03N10W20DC

Revised 8/12/22, WS