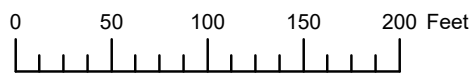


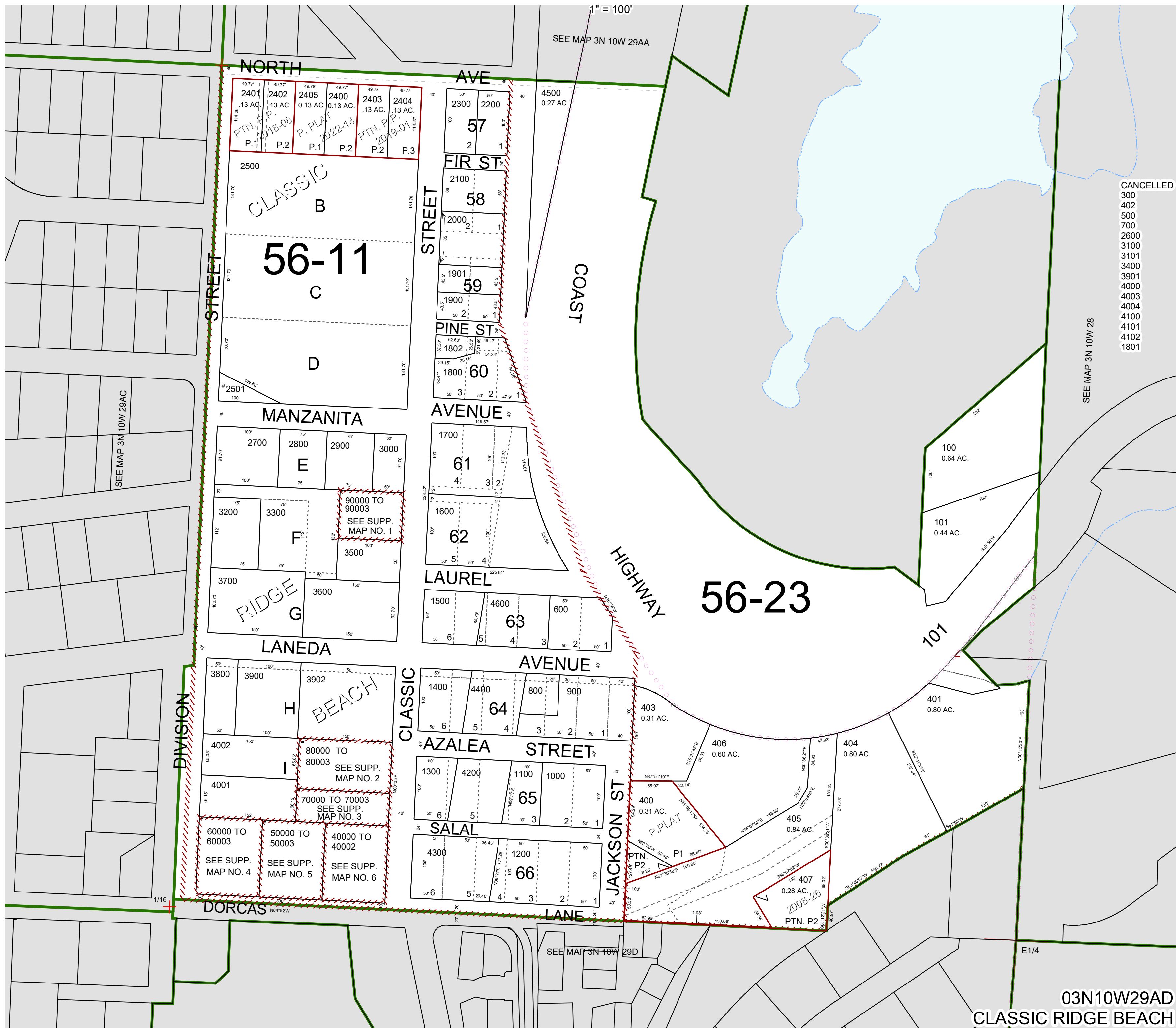
THIS MAP WAS PREPARED FOR ASSESSMENT PURPOSE ONLY



S.E. 1/4 N.E. 1/4 SEC. 29 T. 3N. R. 10W. W.M.

TILLAMOOK COUNTY

03N10W29AD  
CLASSIC RIDGE BEACH



CANCELLED  
300  
402  
500  
700  
2600  
3100  
3101  
3400  
3901  
4000  
4003  
4004  
4100  
4101  
4102  
1801

SEE MAP 3N 10W 28

SEE MAP 3N 10W 29AC

SEE MAP 3N 10W 29AA

SEE MAP 3N 10W 29D

E1/4

03N10W29AD  
CLASSIC RIDGE BEACH

Revised 8/12/22, WS