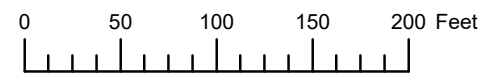


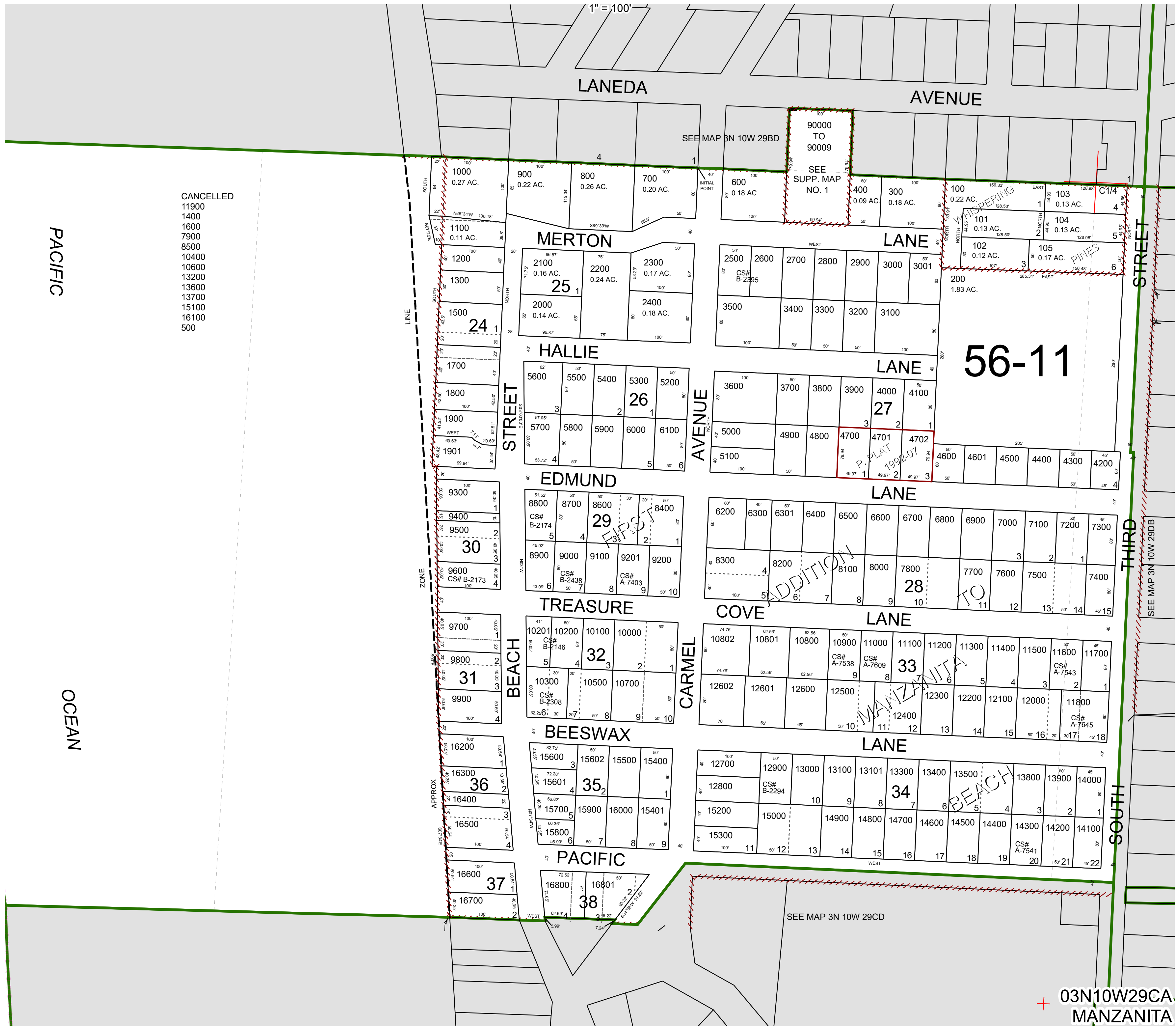
THIS MAP WAS PREPARED FOR ASSESSMENT PURPOSE ONLY



N.E. 1/4 S.W. 1/4 SEC. 29 T. 3N. R. 10W. W.M.

TILLAMOOK COUNTY

03N10W29CA
MANZANITA



- CANCELLED
- 11900
- 1400
- 1600
- 7900
- 8500
- 10400
- 10600
- 13200
- 13600
- 13700
- 15100
- 16100
- 500

56-11

MANZANITA
BEACH

03N10W29CA
MANZANITA